

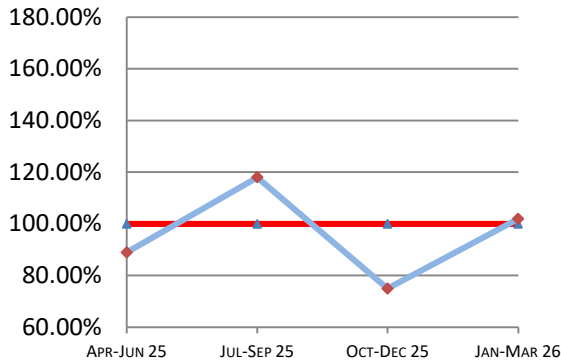
Montana Supreme Court

Case Processing Measures

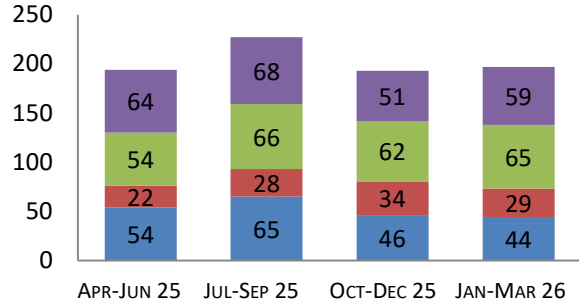
Quarterly Report

Jan-Mar 2026

Case Clearance



Manner of Disposition



Published Opinion Non-Cite Opinion or Memorandum
 Closed Other Original Proceeding Dispositive Order

Age of Pending Cases as of: 04/01/26

Age in Days from Date Sent to Court	# Cases Less than 180 Days Old	# Cases More than 180 Days Old	Percent Current (less than 180 days old)
Direct Appeal			
Civil General	61	10	86%
Domestic Relations	20	0	100%
Abuse & Neglect	10	0	100%
Criminal	60	12	83%
Direct Appeal All	151	22	87%
Original Proceedings	29	0	100%

1st Quarter 2026 Highlights

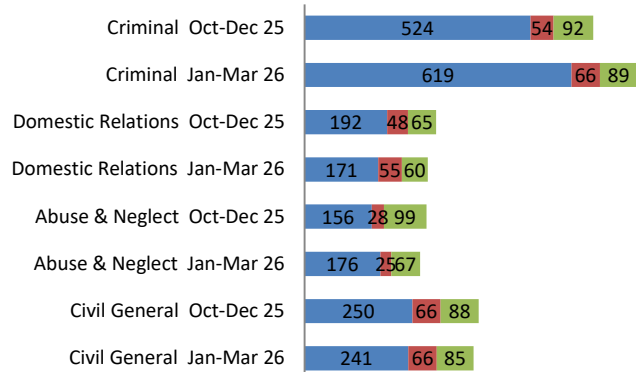
* The Percent Current cases decreased from 93% to 87% for Direct Appeals cases and increased from 97% to 100% for Original Proceedings from Q4 2025 to Q1 2026.

* Case Clearance rates increased from 75% in Q4 2025 to 102% in Q1 2026.

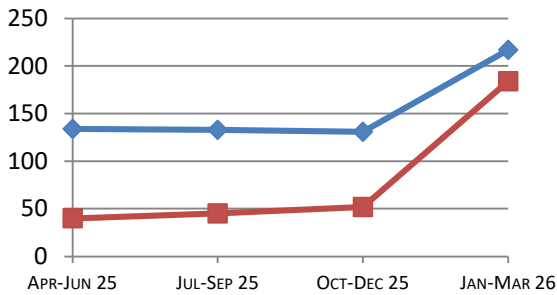
* Time to Disposition rates in both Direct Appeals and Original Proceedings rose from Q4 2025 to Q1 2026.

Direct Appeal Lifecycle - Median Days by Case Type

- Median Days from Notice of Appeal to Court
- Median Days from Date Sent to Court to Classification
- Median Days from Classification to Remittitur



Time to Disposition



Direct Appeals Original Proceedings

Case Clearance: The ratio between the number of cases closed (outgoing) and the number of cases filed (incoming).

Manner of Disposition: The manner by which the Court disposes of its cases.

Age of Pending Cases: The age of the Court's active cases (does not include stayed cases).

Time to Disposition: The length of time (median days) it takes the Court to dispose of cases.

Baseline information and a description of the methodology used is available at www.courts.mt.gov