

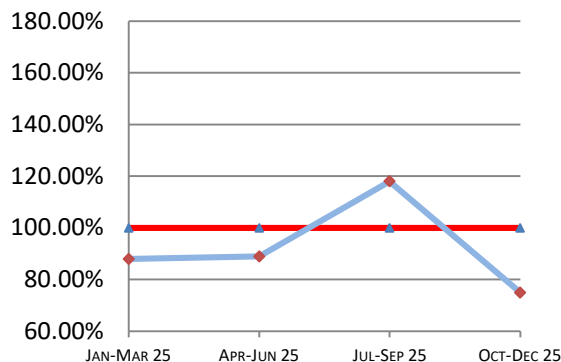
# Montana Supreme Court

## Case Processing Measures

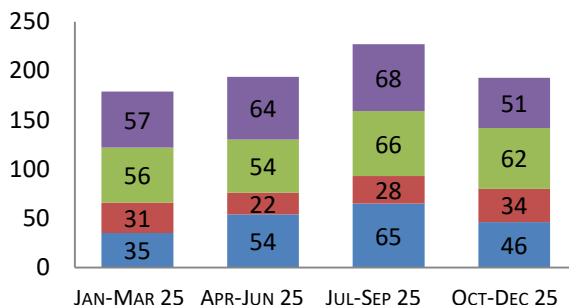
### Quarterly Report

Oct-Dec 2025

#### Case Clearance



#### Manner of Disposition



Published Opinion Non-Cite Opinion or Memorandum  
Closed Other Original Proceeding Dispositive Order

#### Age of Pending Cases as of: 01/01/26

Age in Days from Date Sent to Court	# Cases Less than 180 Days Old	# Cases More than 180 Days Old	Percent Current (less than 180 days old)
<b>Direct Appeal</b>			
Civil General	57	4	93%
Domestic Relations	21	0	100%
Abuse & Neglect	19	0	100%
Criminal	51	7	88%
<b>Direct Appeal All</b>	<b>148</b>	<b>11</b>	<b>93%</b>
<b>Original Proceedings</b>	<b>36</b>	<b>1</b>	<b>97%</b>

#### 4th Quarter 2025 Highlights

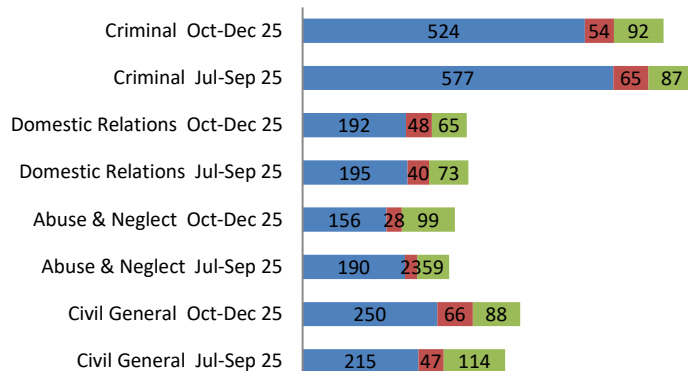
\* Median days from Notice of Appeal to Court in Criminal cases dropped by 53 days between Q3 2025 and Q4 2025.

\* Case Clearance rates decreased from 118% in Q3 to 75% in Q4.

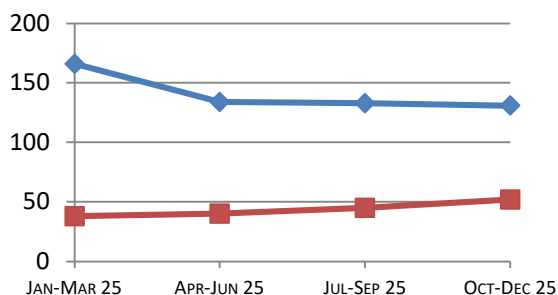
\* Time to Disposition rates in Direct Appeal Cases decreased from 133 days to 131 days and increased in Original Proceeding cases from 45 days to 52 days.

#### Direct Appeal Lifecycle - Median Days by Case Type

- Median Days from Notice of Appeal to Court
- Median Days from Date Sent to Court to Classification
- Median Days from Classification to Remittitur



#### Time to Disposition



Direct Appeals Original Proceedings

**Case Clearance:** The ratio between the number of cases closed (outgoing) and the number of cases filed (incoming).

**Manner of Disposition:** The manner by which the Court disposes of its cases.

**Age of Pending Cases:** The age of the Court's active cases (does not include stayed cases).

**Time to Disposition:** The length of time (median days) it takes the Court to dispose of cases.

Baseline information and a description of the methodology used is available at [www.courts.mt.gov](http://www.courts.mt.gov)