

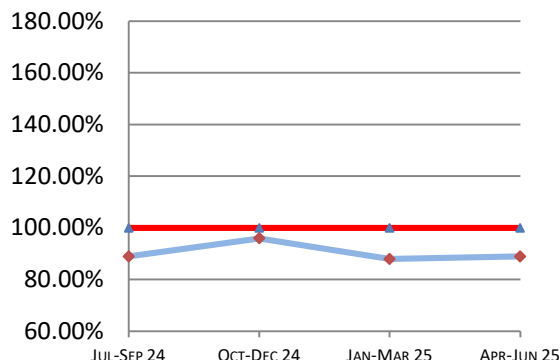
Montana Supreme Court

Case Processing Measures

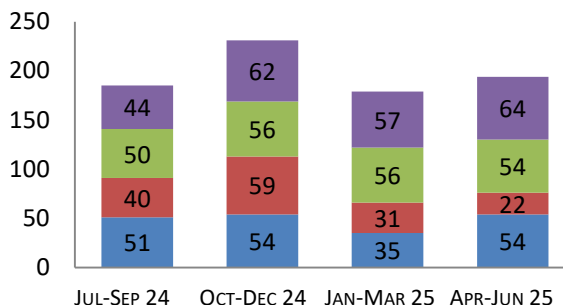
Quarterly Report

Apr-Jun 2025

Case Clearance



Manner of Disposition



Published Opinion Non-Cite Opinion or Memorandum
Closed Other Original Proceeding Dispositive Order

Age of Pending Cases as of: 07/01/25

Age in Days from Date Sent to Court	# Cases Less than 180 Days Old	# Cases More than 180 Days Old	Percent Current (less than 180 days old)
Direct Appeal			
Civil General	51	9	85%
Domestic Relations	16	0	100%
Abuse & Neglect	11	0	100%
Criminal	56	4	93%
Direct Appeal All	134	13	91%
Original Proceedings	36	0	100%

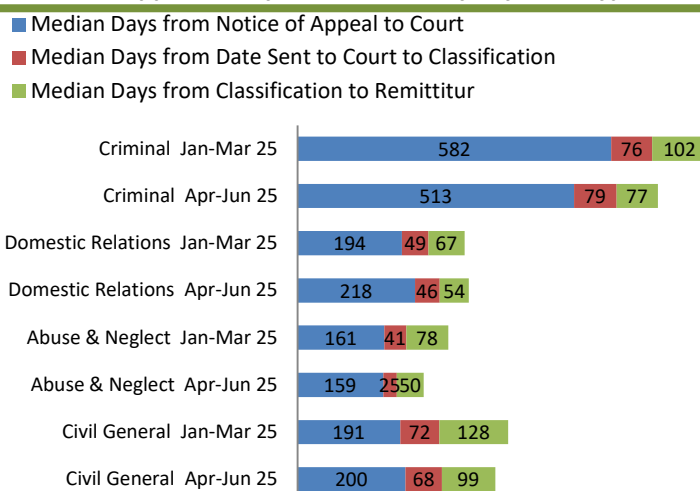
2nd Quarter 2025 Highlights

* Percentage of current cases remained steady for Direct Appeals, increasing from 90% to 91 % between Q1 2025 and Q2 2025, and Original Proceedings, remaining at 100% between Q1 2025 and Q2 2025.

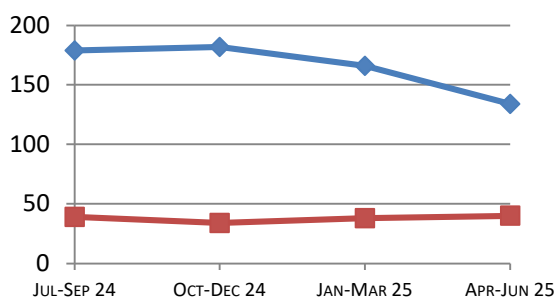
* Case Clearance rates increased slightly from 88% in Q1 2025 to 89% in Q2 2025.

* Time to Disposition for Direct Appeals dropped significantly from 166 days to 134 days in Q2 2025 .

Direct Appeal Lifecycle - Median Days by Case Type



Time to Disposition



Direct Appeals Original Proceedings

Case Clearance: The ratio between the number of cases closed (outgoing) and the number of cases filed (incoming).

Manner of Disposition: The manner by which the Court disposes of its cases.

Age of Pending Cases: The age of the Court's active cases (does not include stayed cases).

Time to Disposition: The length of time (median days) it takes the Court to dispose of cases.

Baseline information and a description of the methodology used is available at www.courts.mt.gov