

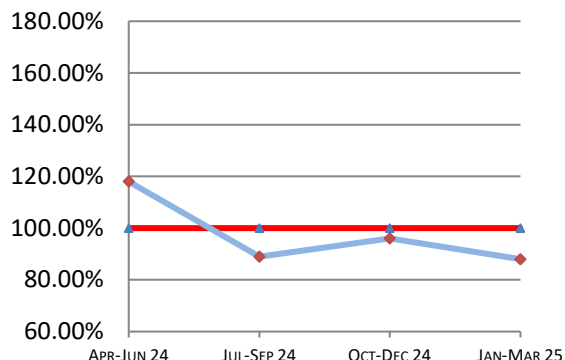
# Montana Supreme Court

## Case Processing Measures

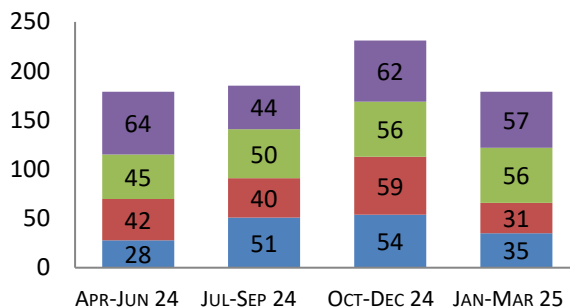
### Quarterly Report

Jan-Mar 2025

#### Case Clearance



#### Manner of Disposition



Published Opinion Non-Cite Opinion or Memorandum  
Closed Other Original Proceeding Dispositive Order

#### Age of Pending Cases as of: 04/01/25

Age in Days from Date Sent to Court	# Cases Less than 180 Days Old	# Cases More than 180 Days old	Percent Current (less than 180 days old)
<b>Direct Appeal</b>			
Civil General	45	9	83%
Domestic Relations	10	0	100%
Abuse & Neglect	3	0	100%
Criminal	55	3	95%
<b>Direct Appeal All</b>	<b>113</b>	<b>12</b>	<b>90%</b>
<b>Original Proceedings</b>			
Original Proceedings	30	0	100%

#### 1st Quarter 2025 Highlights

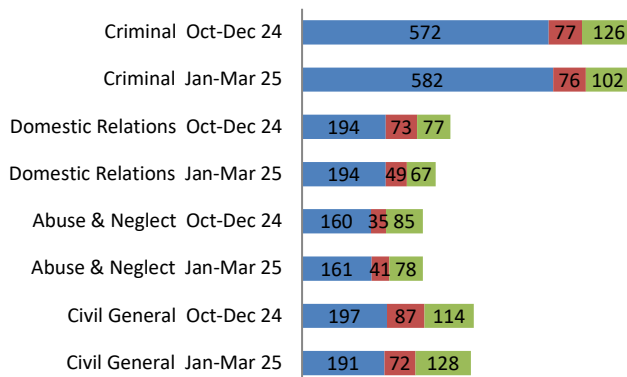
\* Median days from Notice of Appeal to Remittitur decreased or stayed the same in all case types between Q4 2024 and Q1 2025.

\* Case Clearance rates decreased from 96% in Q4 2024 to 88% in Q1 2025.

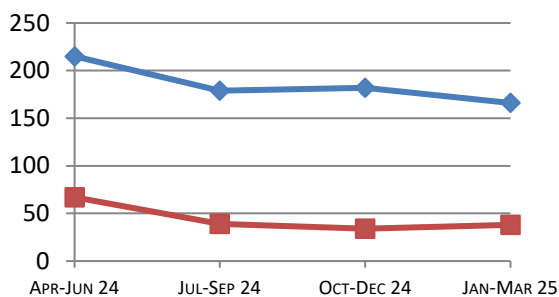
\* Time to Disposition in both Direct Appeals and Original Proceedings remained relatively steady between Q4 2024 and Q1 2025.

#### Direct Appeal Lifecycle - Median Days by Case Type

- Median Days from Notice of Appeal to Court
- Median Days from Date Sent to Court to Classification
- Median Days from Classification to Remittitur



#### Time to Disposition



Direct Appeals Original Proceedings

**Case Clearance:** The ratio between the number of cases closed (outgoing) and the number of cases filed (incoming).

**Manner of Disposition:** The manner by which the Court disposes of its cases.

**Age of Pending Cases:** The age of the Court's active cases (does not include stayed cases ).

**Time to Disposition:** The length of time (median days) it takes the Court to dispose of cases.

Baseline information and a description of the methodology used is available at [www.courts.mt.gov](http://www.courts.mt.gov)