

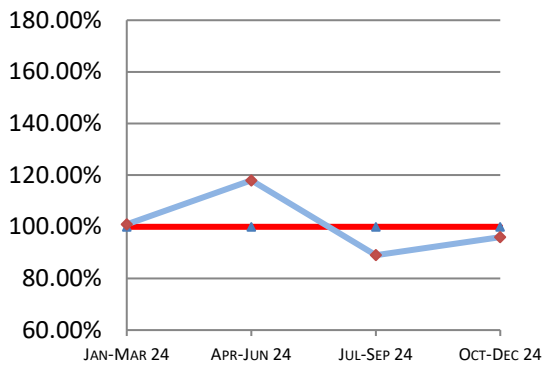
# Montana Supreme Court

## Case Processing Measures

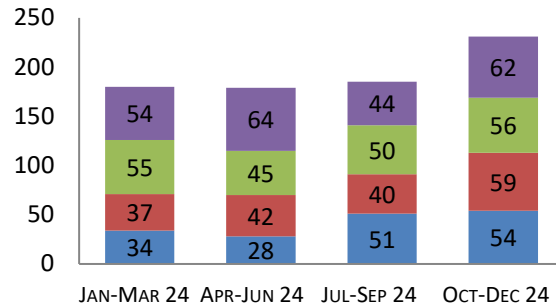
### Quarterly Report

# Oct-Dec 2024

#### Case Clearance



#### Manner of Disposition



Published Opinion    Non-Cite Opinion or Memorandum  
 Closed Other    Original Proceeding Dispositive Order

#### Age of Pending Cases as of: 01/01/25

Age in Days from Date Sent to Court	# Cases Less than 180 Days Old	# Cases More than 180 Days old	Percent Current (less than 180 days old)
<b>Direct Appeal</b>			
Civil General	47	11	81%
Domestic Relations	8	0	100%
Abuse & Neglect	8	0	100%
Criminal	46	12	79%
<b>Direct Appeal All</b>	<b>109</b>	<b>23</b>	<b>83%</b>
<b>Original Proceedings</b>	<b>27</b>	<b>1</b>	<b>96%</b>

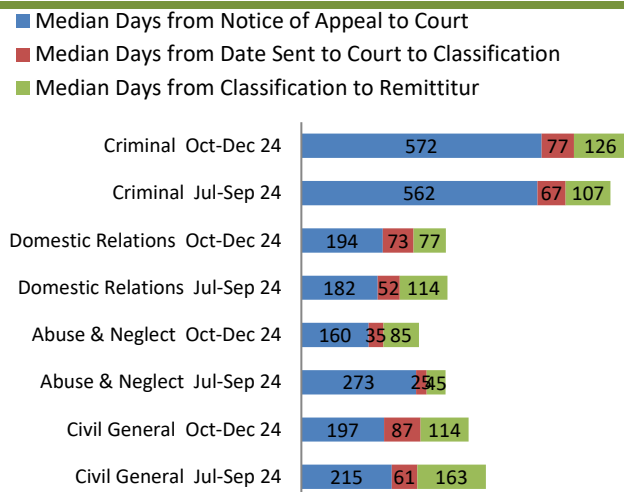
#### 4th Quarter 2024 Highlights

\* Case Clearance Rates increased from 88% in Q3 2024 to 95% in Q4 2024.

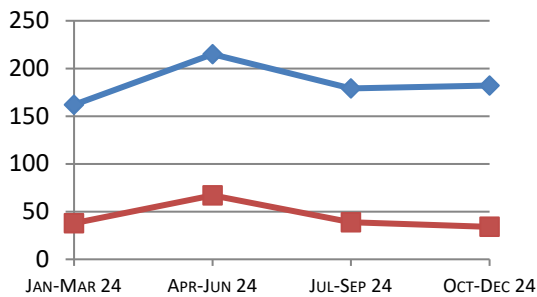
\* The Time to Disposition rates between Q3 2024 and Q4 2024 held steady.

\* Median Days from Notice of Appeal to Court in Abuse & Neglect Cases decreased by 113 days between Q3 & Q4 2024.

#### Direct Appeal Lifecycle - Median Days by Case Type



#### Time to Disposition



Direct Appeals    Original Proceedings

**Case Clearance:** The ratio between the number of cases closed (outgoing) and the number of cases filed (incoming).

**Manner of Disposition:** The manner by which the Court disposes of its cases.

**Age of Pending Cases:** The age of the Court's active cases (does not include stayed cases).

**Time to Disposition:** The length of time (median days) it takes the Court to dispose of cases.

*Baseline information and a description of the methodology used is available at [www.courts.mt.gov](http://www.courts.mt.gov)*