

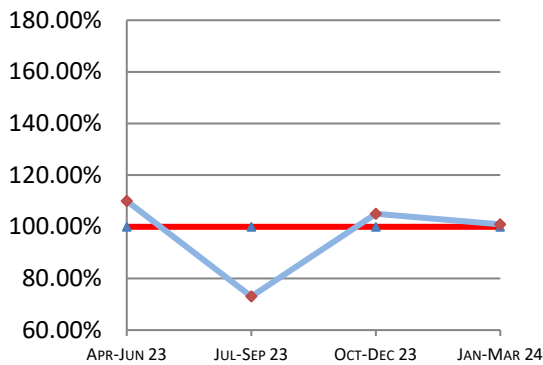
# Montana Supreme Court

## Case Processing Measures

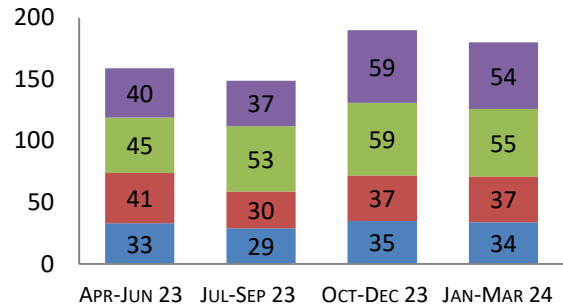
### Quarterly Report

# Jan-Mar 2024

### Case Clearance



### Manner of Disposition



Published Opinion    Non-Cite Opinion or Memorandum  
 Closed Other    Original Proceeding Dispositive Order

### Age of Pending Cases as of: 04/01/24

Age in Days from Date Sent to Court	# Cases Less than 180 Days Old	# Cases More than 180 Days old	Percent Current (less than 180 days old)
<b>Direct Appeal</b>			
Civil General	64	19	77%
Domestic Relations	9	1	90%
Abuse & Neglect	8	3	73%
Criminal	63	9	88%
<b>Direct Appeal All</b>	<b>144</b>	<b>32</b>	<b>82%</b>
<b>Original Proceedings</b>	<b>29</b>	<b>0</b>	<b>100%</b>

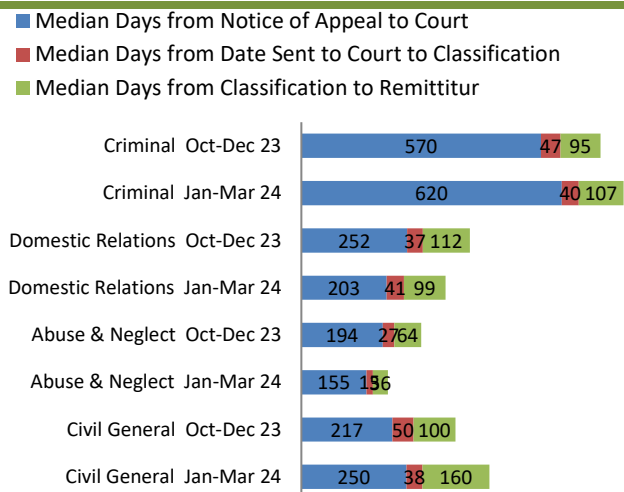
### 1st Quarter 2024 Highlights

82% of Direct Appeal cases are being closed within 180 days of the case being sent to the court. 100% of the Original Proceeding cases are being closed within 180 days of the case being sent to the court.

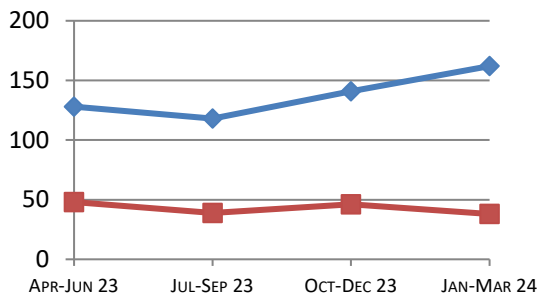
Time to Disposition days increased for Direct Appeal cases but decreased for Original Proceeding cases.

Median Days from Notice of Appeal to Court decreased for Domestic Relations and Abuse & Neglect cases between Q4 2023 and Q1 2024.

### Direct Appeal Lifecycle - Median Days by Case Type



### Time to Disposition



Direct Appeals    Original Proceedings

**Case Clearance:** The ratio between the number of cases closed (outgoing) and the number of cases filed (incoming).

**Manner of Disposition:** The manner by which the Court disposes of its cases.

**Age of Pending Cases:** The age of the Court's active cases (does not include stayed cases).

**Time to Disposition:** The length of time (median days) it takes the Court to dispose of cases.

*Baseline information and a description of the methodology used is available at [www.courts.mt.gov](http://www.courts.mt.gov)*