

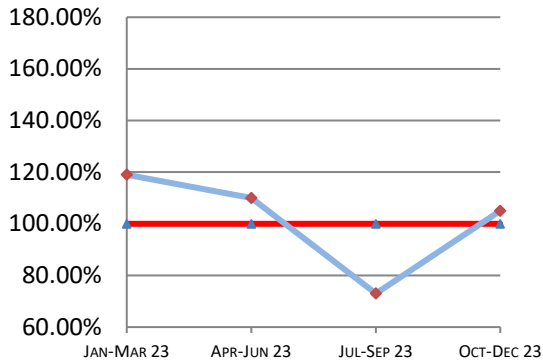
# Montana Supreme Court

## Case Processing Measures

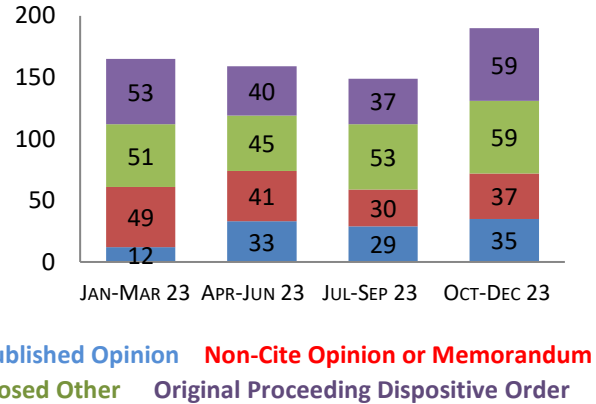
### Quarterly Report

Oct-Dec 2023

#### Case Clearance



#### Manner of Disposition



#### Age of Pending Cases as of: 01/01/24

Age in Days from Date Sent to Court	# Cases Less than 180 Days Old	# Cases More than 180 Days old	Percent Current (less than 180 days old)
<b>Direct Appeal</b>			
Civil General	52	22	70%
Domestic Relations	11	2	85%
Abuse & Neglect	2	3	40%
Criminal	50	7	88%
<b>Direct Appeal All</b>	<b>115</b>	<b>34</b>	<b>77%</b>
<b>Original Proceedings</b>	<b>22</b>	<b>1</b>	<b>96%</b>

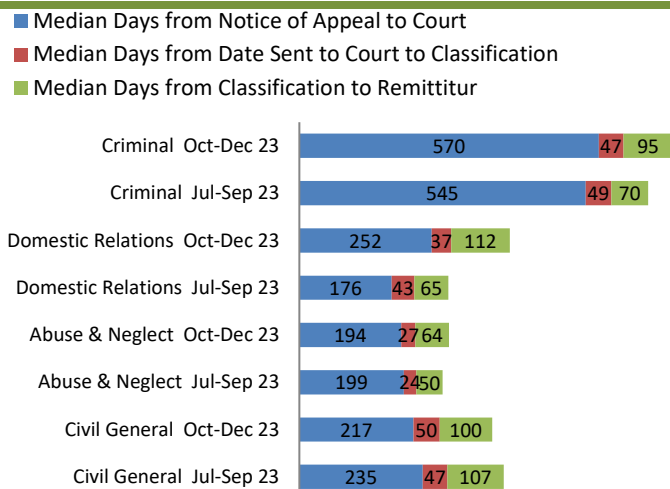
#### 4th Quarter 2023 Highlights

\*Case Clearance rates increased substantially between Q3 and Q4 of 2023. The increase over the quarter went from 73% to 105%.

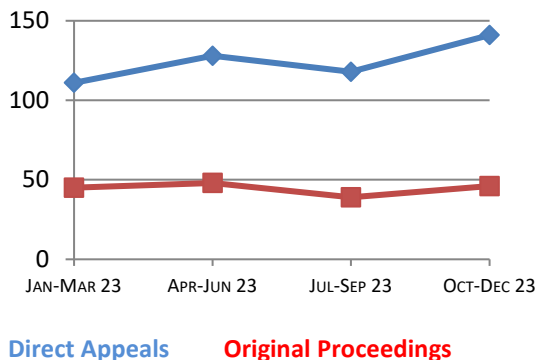
\*34 Direct Appeal cases in Q4 are over 180 days old while 77% of all Direct Appeal cases as current.

\*Time to Disposition in both Direct Appeals and Original Proceedings increased slightly in Q4 2023 over Q3 2023.

#### Direct Appeal Lifecycle - Median Days by Case Type



#### Time to Disposition



**Case Clearance:** The ratio between the number of cases closed (outgoing) and the number of cases filed (incoming).

**Manner of Disposition:** The manner by which the Court disposes of its cases.

**Age of Pending Cases:** The age of the Court's active cases (does not include stayed cases).

**Time to Disposition:** The length of time (median days) it takes the Court to dispose of cases.

*Baseline information and a description of the methodology used is available at [www.courts.mt.gov](http://www.courts.mt.gov)*