

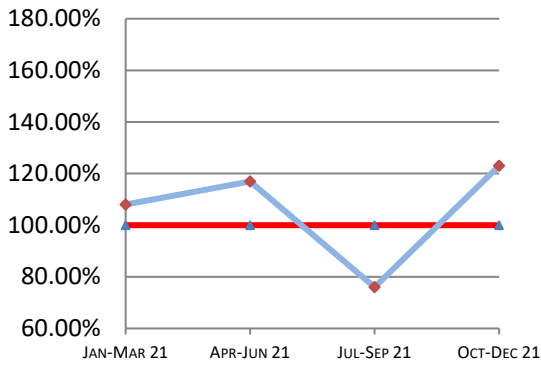
# Montana Supreme Court

## Case Processing Measures

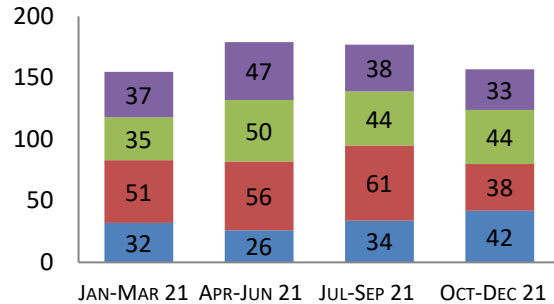
### Quarterly Report

# Oct-Dec 2021

#### Case Clearance



#### Manner of Disposition



Published Opinion    Non-Cite Opinion or Memorandum  
 Closed Other    Original Proceeding Dispositive Order

#### Age of Pending Cases as of: 01/01/22

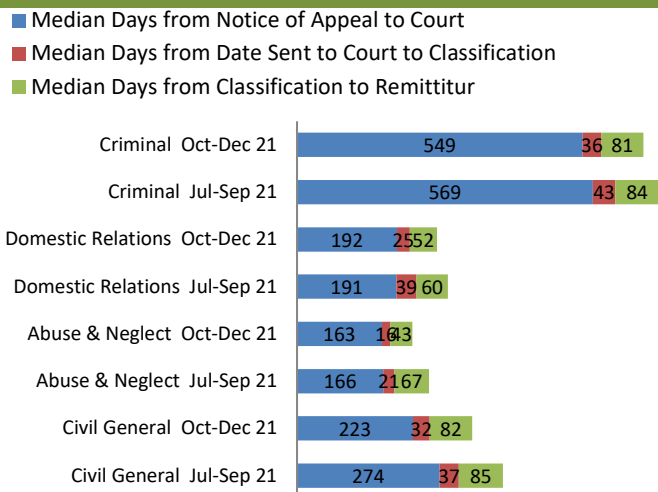
Age in Days from Date Sent to Court	# Cases Less than 180 Days Old	# Cases More than 180 Days old	Percent Current (less than 180 days old)
<b>Direct Appeal</b>			
Civil General	31	3	91%
Domestic Relations	6	0	100%
Abuse & Neglect	9	0	100%
Criminal	34	1	97%
<b>Direct Appeal All</b>	<b>80</b>	<b>4</b>	<b>95%</b>
<b>Original Proceedings</b>	<b>17</b>	<b>0</b>	<b>100%</b>

#### 4th Quarter 2021 Highlights

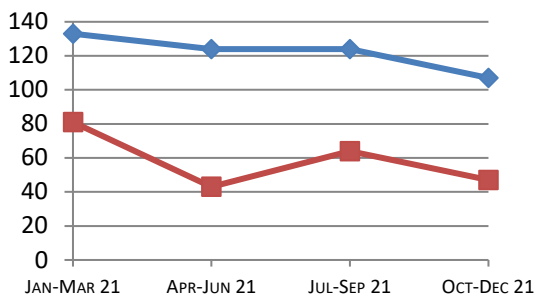
\* Case Clearance rates increased significantly in Q4 of 2021. Q3 Case Clearance rates were at 76%, Q4 Case Clearance rates were at 122%, an increase of 46%.

\* Time to Disposition decreased in both Direct Appeals and Original Proceedings. Both Direct Appeals and Original Proceedings decreased by 17 days in Q4 of 2021.

#### Direct Appeal Lifecycle - Median Days by Case Type



#### Time to Disposition



Direct Appeals    Original Proceedings

**Case Clearance:** The ratio between the number of cases closed (outgoing) and the number of cases filed (incoming).

**Manner of Disposition:** The manner by which the Court disposes of its cases.

**Age of Pending Cases:** The age of the Court's active cases (does not include stayed cases).

**Time to Disposition:** The length of time (median days) it takes the Court to dispose of cases.

*Baseline information and a description of the methodology used is available at [www.courts.mt.gov](http://www.courts.mt.gov)*

