

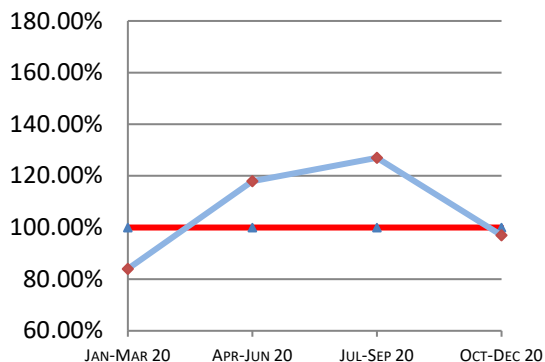
# Montana Supreme Court

## Case Processing Measures

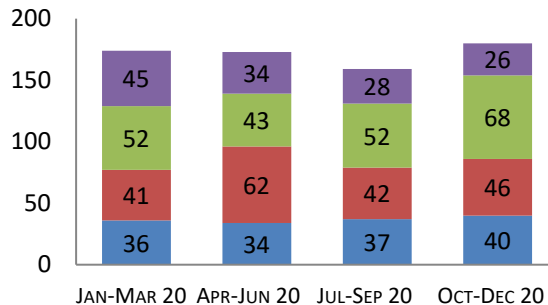
### Quarterly Report

# Oct-Dec 2020

#### Case Clearance



#### Manner of Disposition



Published Opinion    Non-Cite Opinion or Memorandum  
 Closed Other    Original Proceeding Dispositive Order

#### Age of Pending Cases as of: 01/01/21

Age in Days from Date Sent to Court	# Cases Less than 180 Days Old	# Cases More than 180 Days old	Percent Current (less than 180 days old)
<b>Direct Appeal</b>			
Civil General	41	8	84%
Domestic Relations	9	0	100%
Abuse & Neglect	11	0	100%
Criminal	41	4	91%
<b>Direct Appeal All</b>	102	12	89%
<b>Original Proceedings</b>	13	3	81%

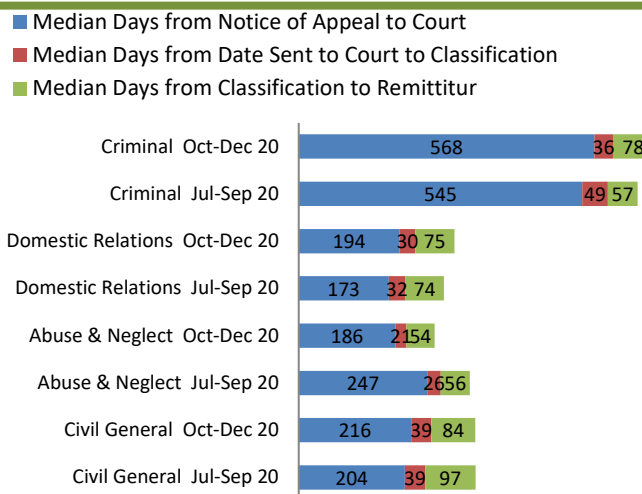
#### 4th Quarter 2020 Highlights

\* Case Clearance rates declined in Q4 of 2020 over Q3 of 2020. Rates in Q3 were 127% and in Q4 were 96%.

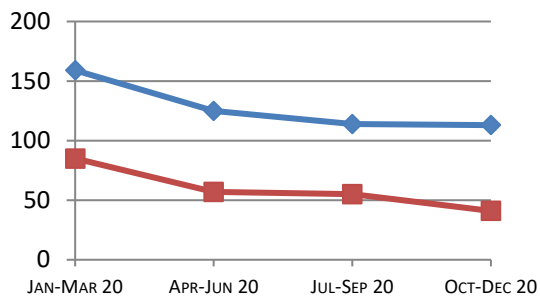
\* Time to Disposition rates for both Direct Appeals and Original Proceedings declined slightly in Q4 of 2020 over Q3 of 2020.

\* Median Days in Abuse & Neglect cases decreased from 247 days in Q3 of 2020 to 186 days in Q4 of 2020.

#### Direct Appeal Lifecycle - Median Days by Case Type



#### Time to Disposition



Direct Appeals    Original Proceedings

**Case Clearance:** The ratio between the number of cases closed (outgoing) and the number of cases filed (incoming).

**Manner of Disposition:** The manner by which the Court disposes of its cases.

**Age of Pending Cases:** The age of the Court's active cases (does not include stayed cases).

**Time to Disposition:** The length of time (median days) it takes the Court to dispose of cases.

Baseline information and a description of the methodology used is available at [www.courts.mt.gov](http://www.courts.mt.gov)

