

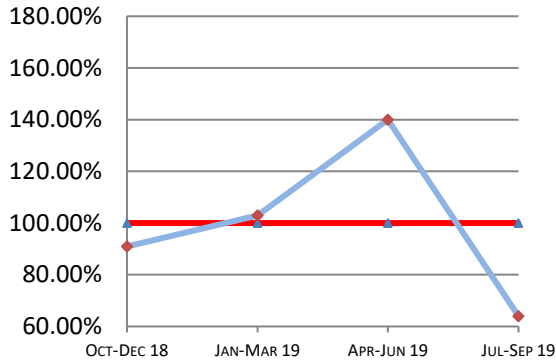
# Montana Supreme Court

## Case Processing Measures

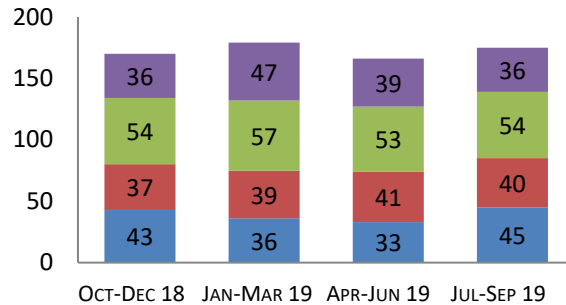
### Quarterly Report

Jul-Sep 2019

#### Case Clearance



#### Manner of Disposition



Published Opinion Non-Cite Opinion or Memorandum  
Closed Other Original Proceeding Dispositive Order

#### Age of Pending Cases - 10/1/2019

DATA UNAVAILABLE THIS QUARTER

#### 3rd Quarter 2019 Highlights

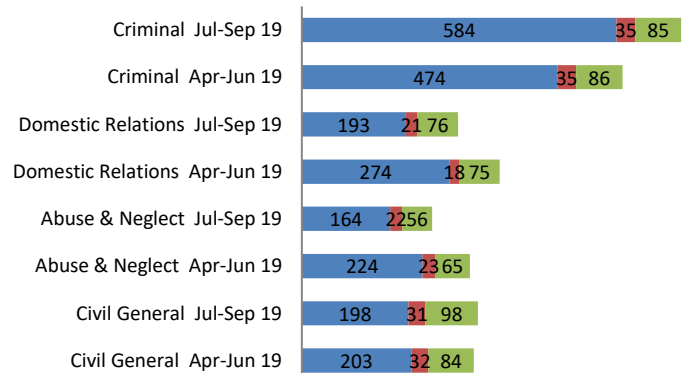
\* Case Clearance rates dropped significantly in Q3 2019 with 44 cases filed and 28 cases closed.

\* Time to Disposition dropped in both Direct Appeals and Original Proceedings in Q3 2019.

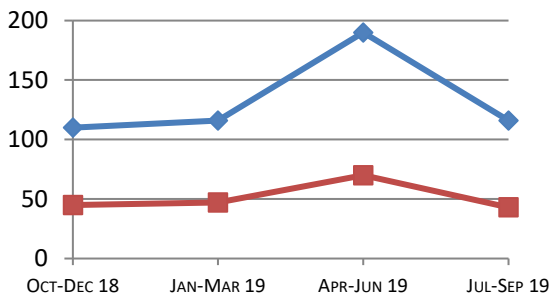
\* All case categories except Criminal saw a decrease in Median Days from Notice of Appeal to Court in Q3 2019.

#### Direct Appeal Lifecycle - Median Days by Case Type

- Median Days from Notice of Appeal to Court
- Median Days from Date Sent to Court to Classification
- Median Days from Classification to Remittitur



#### Time to Disposition



Direct Appeals Original Proceedings

**Case Clearance:** The ratio between the number of cases closed (outgoing) and the number of cases filed (incoming).

**Manner of Disposition:** The manner by which the Court disposes of its cases.

**Age of Pending Cases:** The age of the Court's active cases (does not include stayed cases).

**Time to Disposition:** The length of time (median days) it takes the Court to dispose of cases.

Baseline information and a description of the methodology used is available at [www.courts.mt.gov](http://www.courts.mt.gov)

