

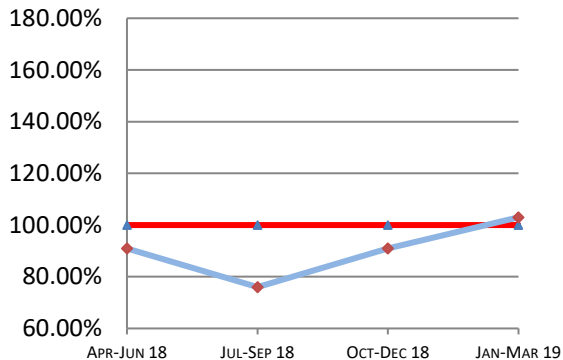
# Montana Supreme Court

## Case Processing Measures

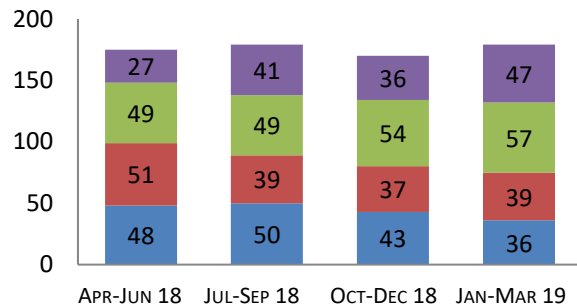
### Quarterly Report

# Jan-Mar 2019

#### Case Clearance



#### Manner of Disposition



Published Opinion Non-Cite Opinion or Memorandum  
Closed Other Original Proceeding Dispositive Order

#### Age of Pending Cases as of: 04/01/19

Age in Days from Date Sent to Court	# Cases Less than 180 Days Old	# Cases More than 180 Days old	Percent Current (less than 180 days old)
<b>Direct Appeal</b>			
Civil General	51	2	96%
Domestic Relations	6	0	100%
Abuse & Neglect	10	0	100%
Criminal	32	3	91%
<b>Direct Appeal All</b>	99	5	95%
<b>Original Proceedings</b>	37	4	90%

#### 1st Quarter 2019 Highlights

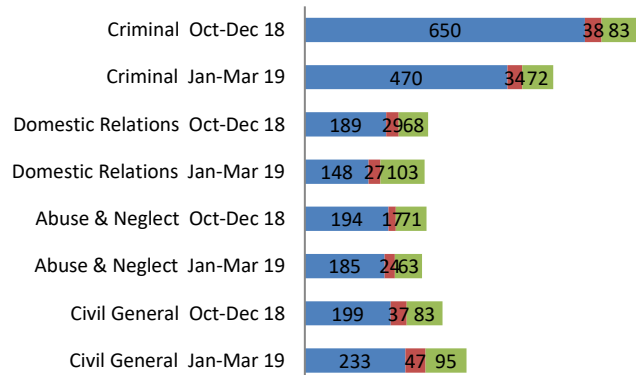
\* Case Clearance Rates Increased from 91% to 103% in Q1 of 2019 over Q4 2018.

\* Time to Disposition for both Direct Appeals and Original Proceedings remain fairly steady between Q3 2018 and Q1 of 2019.

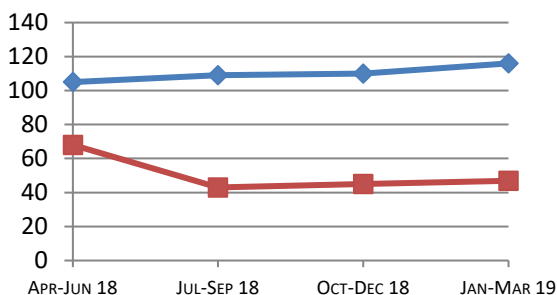
\* Median days from Notice of Appeal to Court in Criminal Cases decreases by 180 days in Q1 2019 over Q4 2018, and by 41 days in Domestic Relations Cases.

#### Direct Appeal Lifecycle - Median Days by Case Type

- Median Days from Notice of Appeal to Court
- Median Days from Date Sent to Court to Classification
- Median Days from Classification to Remittitur



#### Time to Disposition



Direct Appeals Original Proceedings

**Case Clearance:** The ratio between the number of cases closed (outgoing) and the number of cases filed (incoming).

**Manner of Disposition:** The manner by which the Court disposes of its cases.

**Age of Pending Cases:** The age of the Court's active cases (does not include stayed cases).

**Time to Disposition:** The length of time (median days) it takes the Court to dispose of cases.

Baseline information and a description of the methodology used is available at [www.courts.mt.gov](http://www.courts.mt.gov)