

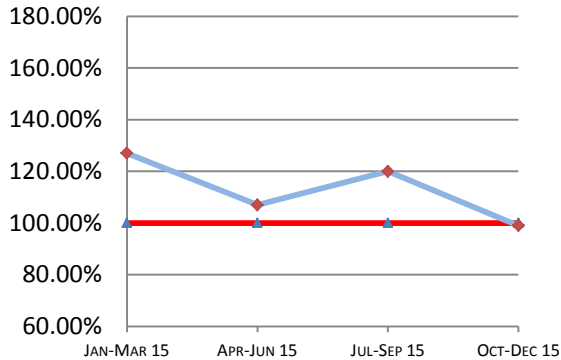
# Montana Supreme Court

## Case Processing Measures

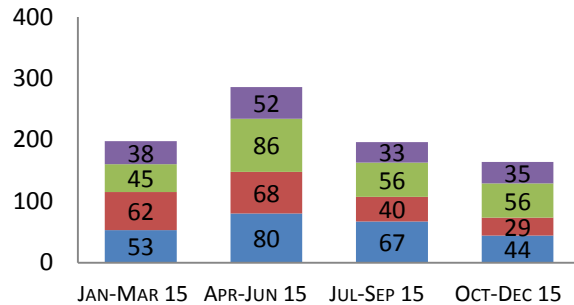
### Quarterly Report

# Oct-Dec 2015

#### Case Clearance



#### Manner of Disposition



Published Opinion Non-Cite Opinion or Memorandum  
Closed Other Original Proceeding Dispositive Order

#### Age of Pending Cases as of: 01/01/16

Age in Days from Date Sent to Court	# Cases Less than 180 Days Old	# Cases More than 180 Days old	Percent Current (less than 180 days old)
<b>Direct Appeal</b>			
Civil General	55	2	96%
Domestic Relations	6	0	100%
Abuse & Neglect	11	0	100%
Criminal	26	0	100%
<b>Direct Appeal All</b>	98	2	98%
<b>Original Proceedings</b>	21	0	100%

#### 4th Quarter 2015 Highlights

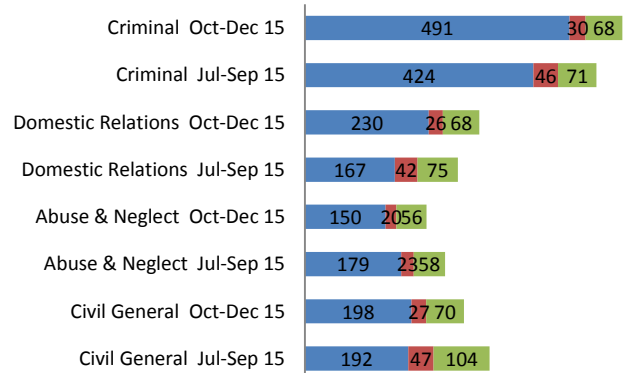
\* Case clearance rates dropped in Quarter 4, 2015 by 21% with 132 cases filed and 131 cases closed versus 145 cases filed and 174 cases closed in Quarter 3, 2015.

\* Direct Appeal disposition time dropped by 40 days over Quarter 3, 2015.

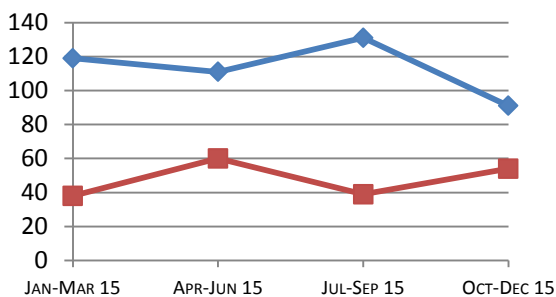
\* Original Proceedings Time to Disposition increased slightly over Quarter 3, 2015.

#### Direct Appeal Lifecycle - Median Days by Case Type

- Median Days from Notice of Appeal to Court
- Median Days from Date Sent to Court to Classification
- Median Days from Classification to Remittitur



#### Time to Disposition



Direct Appeals Original Proceedings

**Case Clearance:** The ratio between the number of cases closed (outgoing) and the number of cases filed (incoming).

**Manner of Disposition:** The manner by which the Court disposes of its cases.

**Age of Pending Cases:** The age of the Court's active cases (does not include stayed cases).

**Time to Disposition:** The length of time (median days) it takes the Court to dispose of cases.

Baseline information and a description of the methodology used is available at [www.courts.mt.gov](http://www.courts.mt.gov)