

Comprehensive Case Plans – Meeting the Needs of Families and Agencies

Kirstin Frescoln, PhD, CPM

Center for Children and Family Futures

Montana Treatment Court Conference, September 2022



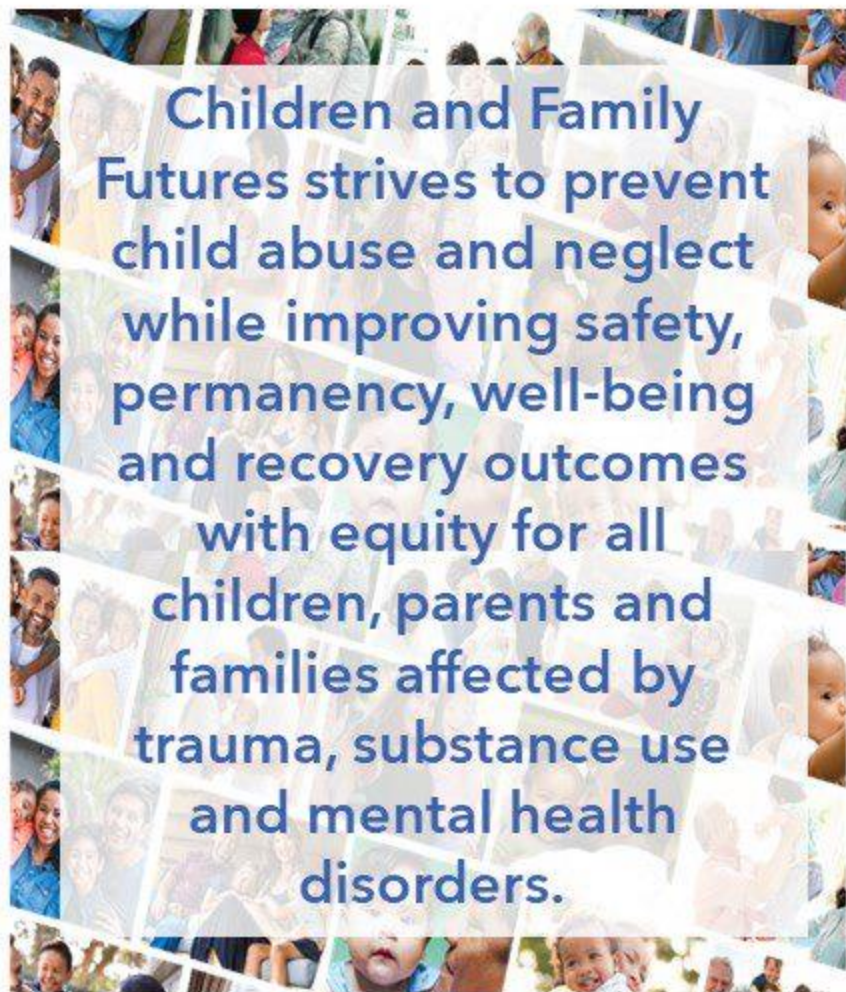
CENTER FOR CHILDREN AND FAMILY FUTURES
Strengthening Partnerships, Improving Family Outcomes

Acknowledgment

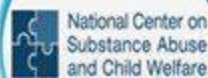
This presentation is supported by Grant #2019-DC-BX-K013 awarded by the Office of Juvenile Justice and Delinquency Prevention, Office of Justice Programs, U.S. Department of Justice.



This project is supported by Grant # 2019-DC-BX-K013 awarded by the Office of Juvenile Justice and Delinquency Prevention, Office of Justice Programs, U.S. Department of Justice. The opinions, findings, and conclusions or recommendations expressed in this publication/program/exhibition are those of the author(s) and do not necessarily reflect those of the Department of Justice.



Children and Family Futures strives to prevent child abuse and neglect while improving safety, permanency, well-being and recovery outcomes with equity for all children, parents and families affected by trauma, substance use and mental health disorders.



NATIONAL CENTER ON SUBSTANCE ABUSE & CHILD WELFARE (NCSACW)

- Collaborative Training and Technical Assistance
- Regional Partnership Grants Technical Assistance
- In-Depth Technical Assistance

Funded by the Children's Bureau (CB), Administration for Children and Families (ACF), co-funded by the Substance Abuse and Mental Health Services Administration (SAMHSA)



NATIONAL FAMILY DRUG COURT TRAINING & TECHNICAL ASSISTANCE PROGRAM (FDC-TTA)

- Office of Juvenile Justice and Delinquency Prevention FDC Grantee TTA
- FDC TTA (Non-grantee)

Funded by Office of Juvenile Justice and Delinquency Prevention (OJJDP)



NATIONAL SOBRIETY TREATMENT & RECOVERY TEAMS TRAINING AND TECHNICAL ASSISTANCE PROGRAM (START)

Funded by Individual States and/or Local Jurisdictions

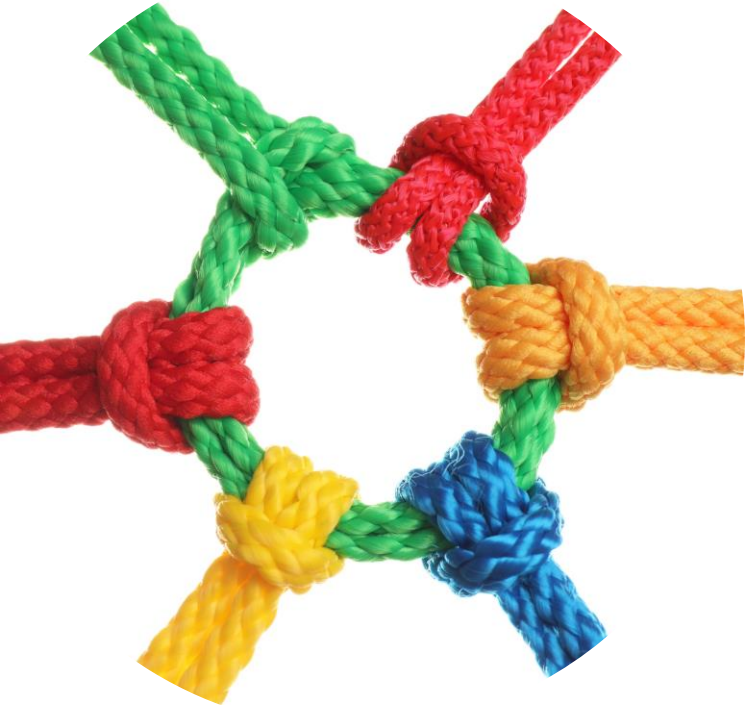


CHILDREN & FAMILY FUTURES TECHNICAL ASSISTANCE & EVALUATION PROJECTS (CFF)

- Casey Family Programs
- Duval County, FL Fourth Judicial Circuit FTC TA
- National Quality Improvement Center on Family-Centered Reunification
- Recovery Opportunities Open for Men (ROOM) for Dads
- Sacramento County Dependency Family Treatment Court
- Sacramento County Early Intervention Family Treatment Court
- Strong Families, Strong Children
 - Behavioral Health Services of Veteran Families
 - Continuum of Care for Veteran Families
 - Orange County Veterans Initiative



Learning Objectives



At the end of this session, participants will be able to:

- Describe the research supporting family-centered case plans, and formulate *effective* plans that incorporate children and family members' strengths while meeting their needs
- Explain how phase structure can support comprehensive case plans that encourage parents to engage in their recovery and parenting services
- Learn behavioral benchmark strategies to integrate and align participant progress with various case plan elements, including treatment, parenting time, and services for children

The Matter of Time

**Adoption and Safe
Families Act (ASFA) –
12-month timetable for
reunification**

**Treatment and Recovery
– lifelong process**

Conflicting Clocks

**Child Development – impact on bonding
and attachment**



Engagement is Everyone's Job

Engagement begins
during the first
interaction and
continues throughout
the entire case





What Makes Family Treatment Courts Effective?

1. Get parents into treatment more quickly
2. Support parents to remain in treatment longer
3. Provide skills-based training and other supports to ensure parents are competent and confident to care for their children
4. Problem-solve barriers to stable recovery and reunification

Key Strategies to Respond to Participant Behavior



Comprehensive
Case Plan

FTC Phases

Treatment
Adjustments

Complementary
Service
Modifications

Incentives and
Sanctions

Child and
Family Focus

Do Parents Know What They Need to Do to Reunify?

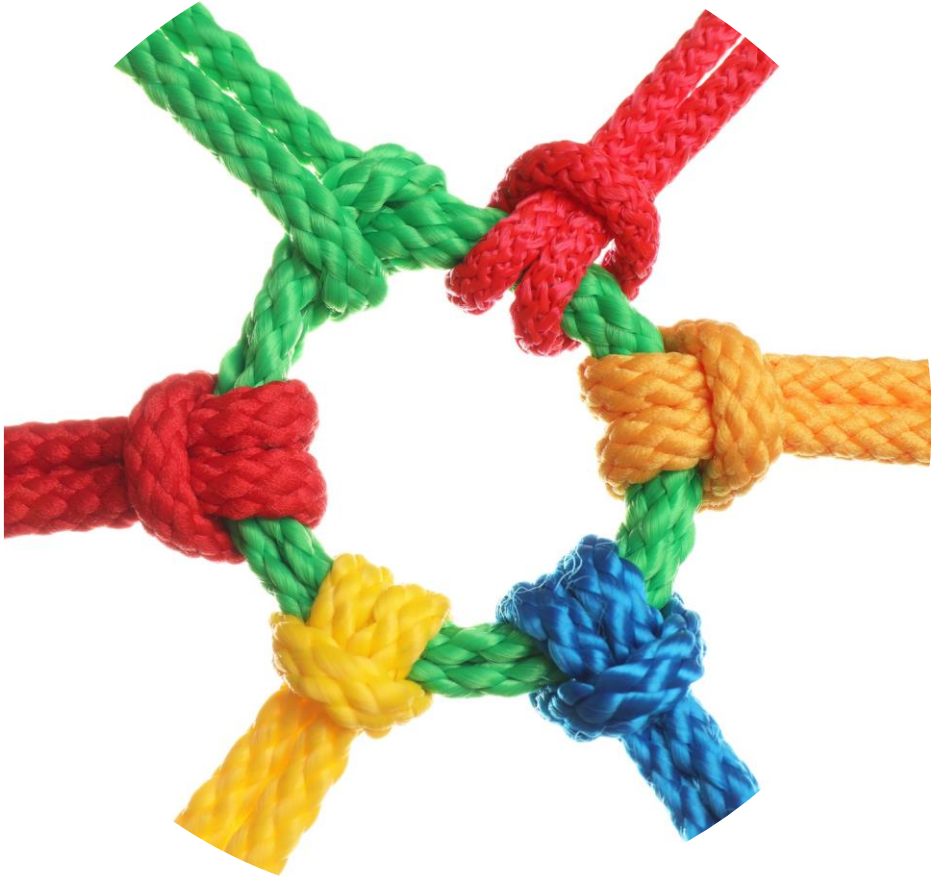




Vulnerable children, parents, and family members require the intensive, collaborative efforts of child welfare, the dependency court, treatment providers, and other community members to meet their complex treatment and service needs.

No single agency has the skill or capacity to meet all of their needs.

Interagency Service Coordination



Higher levels of interagency service coordination and communication are significantly associated with higher rates of service initiation, engagement, and retention resulting in improved substance use, mental health, and parenting outcomes.

(Alcohol and Drug Abuse Institute, 2018; Morgenstern, et al, 2006; Morgenstern, et al, 2009; National Center on Addiction and Substance Abuse at Columbia University, 2009; National Association of State and Alcohol and Drug Abuse Directors, 2011; Bai, et al, 2009)

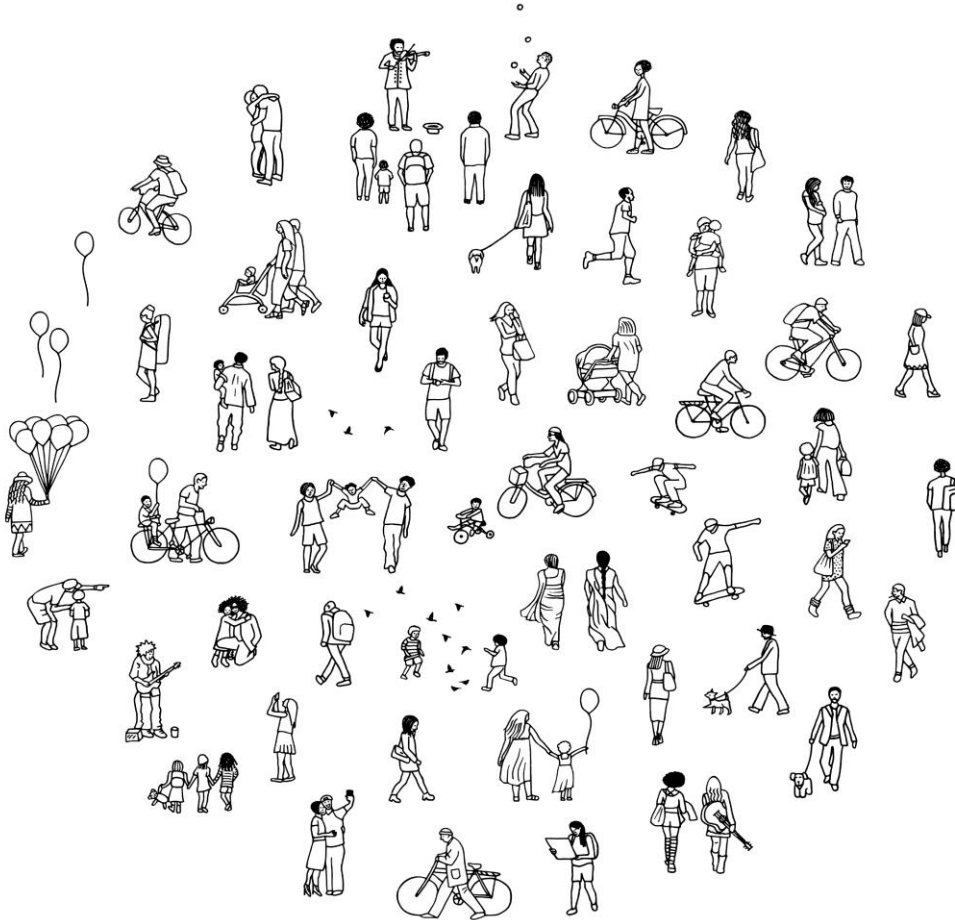
The Coordinated, Family-Centered Case Plan

Family Team Meetings, Family Group Decision Making, Child and Family Team Meetings

- Are facilitated meetings
- ACTIVELY engages parent(s), child(ren), other family members (as appropriate) in meeting
- Focuses on determining individual and family strengths and needs
- Results in written plans that the family understands with clearly articulated action steps and who is responsible
- Sets out broad steps needed for successful case closure
- Seeks to reduce the number of times a family has to tell their story or engage with professionals in developing a case plan

Professionals accommodate the needs of the family - Not the other way around!

Who Do We Mean When We Say “Family”?



- Multiple generations and households
- Immediate or nuclear family members (e.g., children and other parent)
- Extended family members (e.g., aunts, uncles, cousins, stepparents, grandparents)
- Individuals who play a significant role but are not related by blood or marriage
- Resource families and other supports

Every Person Defines “Family” Differently

The Coordinated, Family-Centered Case Plan

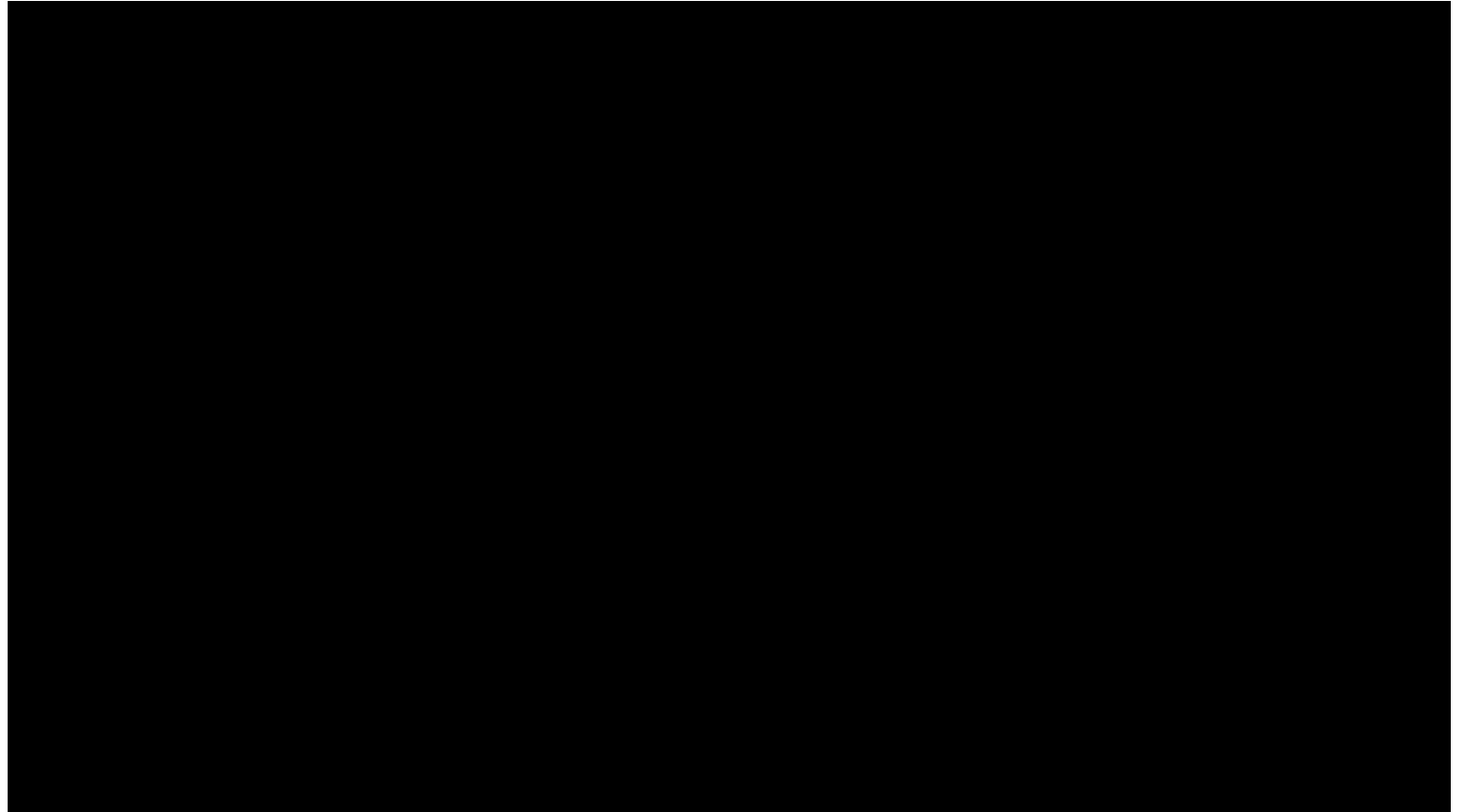
- Embraces each family's unique culture, including race, ethnicity, gender and gender identity, sexual orientation, socioeconomic status, geographic location, and other factors associated with the family's identity
- Considers how to build upon the family's culture to strengthen parenting capacity, safety, and support networks
- Reduces disparities in outcomes by ensuring all children, parents, and families are supported and engaged equitably

Case Plans are Developed with the Family

- Include a broad definition of family to include all individuals whom the child and parent consider “family”
- Prioritize a family’s cultural beliefs, values, and traditions
- Increase parent and child engagement in case plans
- Support the parent’s commitment to achieving case objectives as well as relationships between the parent, child, and service providers
- Enhance the fit between the family member’s needs and services

Include the parent’s attorney or legal team’s social worker and/or peer support in case planning and team/family meetings to provide additional support

Standard 6:
Baltimore City
Circuit Court
Family
Recovery
Program, MD



Child and Family Services Reviews Round 3 Findings 2015-2016

- Families did better when parents and children were involved in case planning
- Families did better when there was frequent quality parenting time



(US Dept of Health and Human Services, Children's Bureau, 2017)

Needs

Adverse Childhood Experiences' (ACEs) Informed Approach to Substance Use Disorder Treatment



of ACEs Outcome

- | | |
|----|------------------------------------------------|
| 4≥ | 500% more likely to abuse alcohol |
| 5≥ | 7-10x more likely to report illicit drug abuse |
| 6≥ | 46x more likely to use drugs intravenously |

(Felitti, 2003)

What is recovery?

SAMHSA's Working Definition

"Recovery is a process of change through which individuals improve their health and wellness, live self-directed lives, and strive to reach their full potential."

Access to evidence-based substance use disorder treatment and recovery support services are important building blocks to recovery.



Four Major Dimensions of Recovery

Health

Overcoming or managing one's disease(s) or symptoms and making informed, healthy choices that support physical and emotional well-being

Home

Maintaining a stable and safe place to live

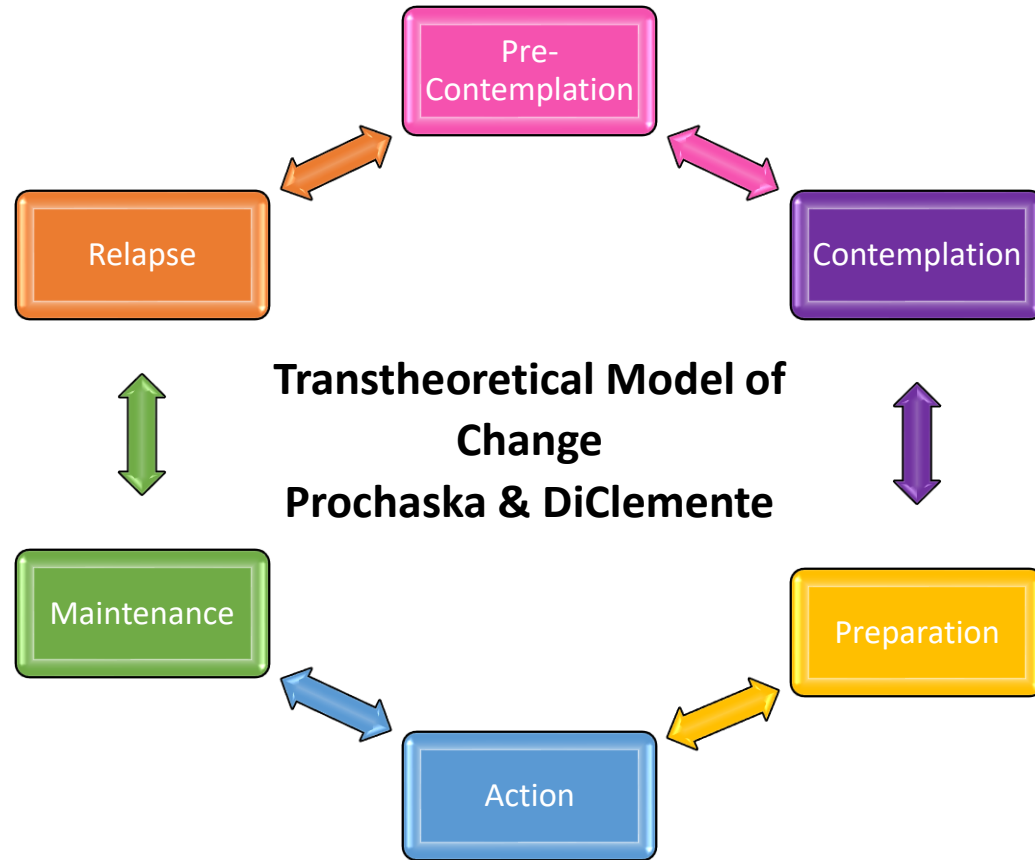
Purpose

Conducting meaningful daily activities, such as a job, school or volunteerism, and having the independence of income, and resources to participate in society

Community

Having relationships and social networks that provide support, friendship, love, and hope

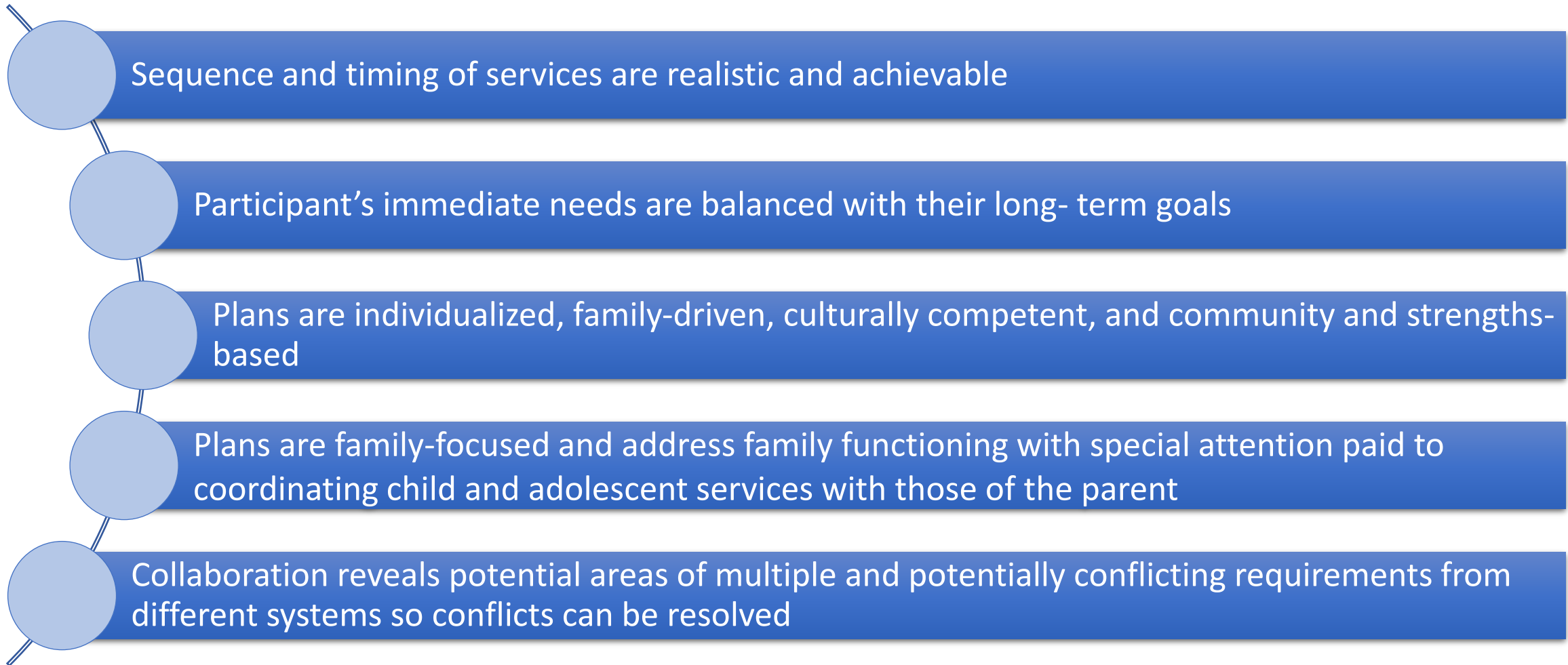
Stages of Change



- FTCs require participants to engage in major change in many life domains
- The participant will be ready for some of these changes
- Other changes may require additional coaching

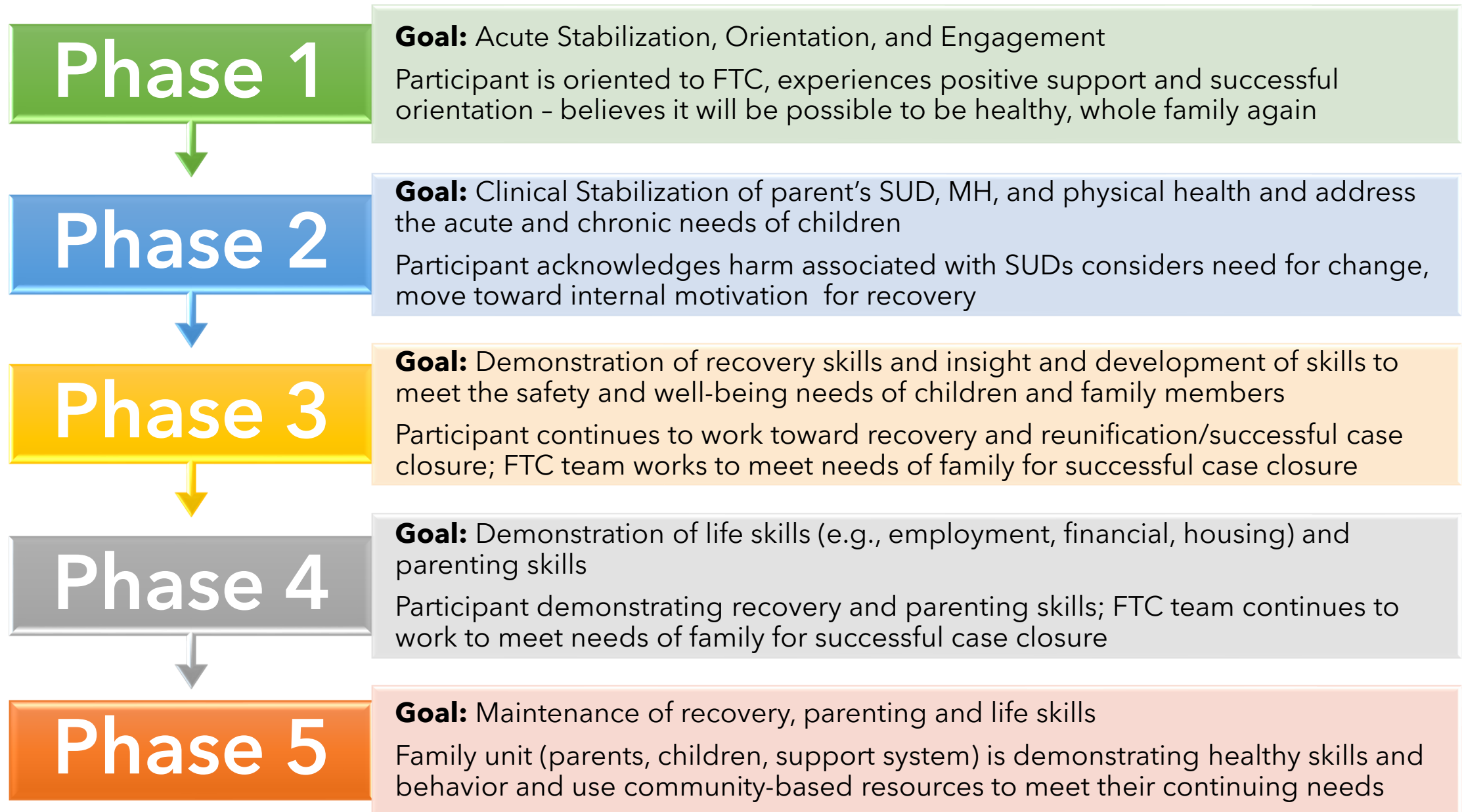
Motivational Interviewing is an effective strategy to help participants progress along the Stages of Change

The Coordinated, Family-Centered Case Plan



FTC Phases

Research on adult drug courts has documented reduced recidivism and increased cost savings when these courts use a clearly defined phase structure and have concrete behavioral requirements for advancement from one phase to the next.



Phases as an Engagement Strategy

- Leverage the phase structure to create a behavior-based, family-centered program
- Allow parents to see how their progress through the phases moves them to THEIR goal
- Creates shared goals and coordinated case plans for all partners including the family
- Focus on vital services
- Lay out steps towards reunification

Coordinated Case Planning

Challenges

- Each agency has its own mandates, requirements, funding sources, and timelines – may require parents to complete duplicative or competing services
- Parents and children have multiple case managers with varying levels of involvement and oversight
- Goals for each case plan may differ significantly
- Can create conflicting requirements or overlapping scheduling demands, leading to impossible expectations for parents, children, and their support networks



Coordinated Case Planning

Solutions

- Meet with leadership from agencies that serve families in the FTC
- Discuss expectations and determine roles and responsibilities
- Create agreements about requirements to help parents follow all agency expectations (e.g., drug testing)
- Cross-train team members on partner agency expectations, roles, and responsibilities so case management services can assist parents to accomplish and prioritize tasks



Coordinated Case Planning

Solutions

- Prioritize being family-centered by ensuring requirements do not conflict with parenting time
- Collaborate to ensure stakeholders want same outcome, work together so parents don't have to figure out which system to please
- Learn to share information that all agencies need by utilizing effective releases of information



Effective Case Plans

- ❖ Case plans are developed with the parent, child (if appropriate), and family (of choice)
- ❖ Services included in the case plan are based on valid and reliable assessments
- ❖ Case plan activities prioritize a high level of parent-child interaction
- ❖ Case plans initially focus on helping families enroll and engage in treatment services quickly
- ❖ Case plans should be reviewed and updated regularly

FAMILY TREATMENT COURT

Peer Learning Court Program



CENTER FOR CHILDREN AND FAMILY FUTURES
Strengthening Partnerships, Improving Family Outcomes

King County FTC, WA

Tompkins County FTC, NY

Wapello County FTC, IA

Grant County FRC, IN

Jefferson County FIT Court, CO

Baltimore City Circuit FRP, MD

Pima County FDC, AZ

Travis County PIR/FDTC, TX

PEER-TO-PEER SUPPORT INCLUDES:

- Virtual learning opportunities (e.g., video conference calls, topic-specific consultation)
- Access to FTC policies, handbooks, practices, and lessons
- A virtual and/or in-person team site visit, providing an opportunity to observe their FTC court proceedings and staffing sessions

To learn more about the FTC Peer Learning Court Program or to participate in a peer-to-peer connection, contact us peerlearningcourts@cffutures.org

A scenic landscape featuring a sunburst effect over a mountain range. The sun is positioned in the upper left, casting a bright glow across the sky and illuminating the clouds. The mountains are layered, with the foreground showing a dense forest of evergreen trees. The overall atmosphere is serene and majestic.

Q&A and Discussion

CONTACT US:

Kirstin Frescoln, Senior Program Associate

kfrescoln@cffutures.org

fdc@cffutures.org



CENTER FOR CHILDREN AND FAMILY FUTURES
Strengthening Partnerships, Improving Family Outcomes