



CENTER FOR CHILDREN AND FAMILY FUTURES  
Strengthening Partnerships, Improving Family Outcomes



# Building Support: Promoting Safety and Healing for Families Affected by Interpersonal Violence and Substance Use Disorders

September 9, 2024

Alexis Balkey, MPA | Program Director

Will Blakeley, MA | Program Associate

Center for Children and Family Futures

# Acknowledgment

---

This presentation is supported by Grant #15PJDP-22-GK-03559-DGCT awarded by the Office of Juvenile Justice and Delinquency Prevention, Office of Justice Programs, U.S. Department of Justice.



*This project is supported by grant number 15PJDP-22-GK-03559-DGCT awarded by the Office of Juvenile Justice and Delinquency Prevention, Office of Justice Programs, U.S. Department of Justice. The opinions, findings, and conclusions or recommendations expressed in this publication/program/exhibition are those of the author(s) and do not necessarily reflect those of the Department of Justice.*



# OJJDP Priorities

<https://ojjdp.ojp.gov/>



Center For Children and Family Futures (CCFF) strives to prevent child abuse and neglect while improving safety, permanency, well-being, and recovery outcomes with equity for all children, parents, and families affected by trauma, substance use, and mental health disorders.





# Learning Objectives

---

**Highlight key principles and best practice strategies**

---

**Learn how to successfully address safety and recovery needs**

---

**Identify approaches to strengthen partnerships in communities**



# Experiencing Violence in the Family Context

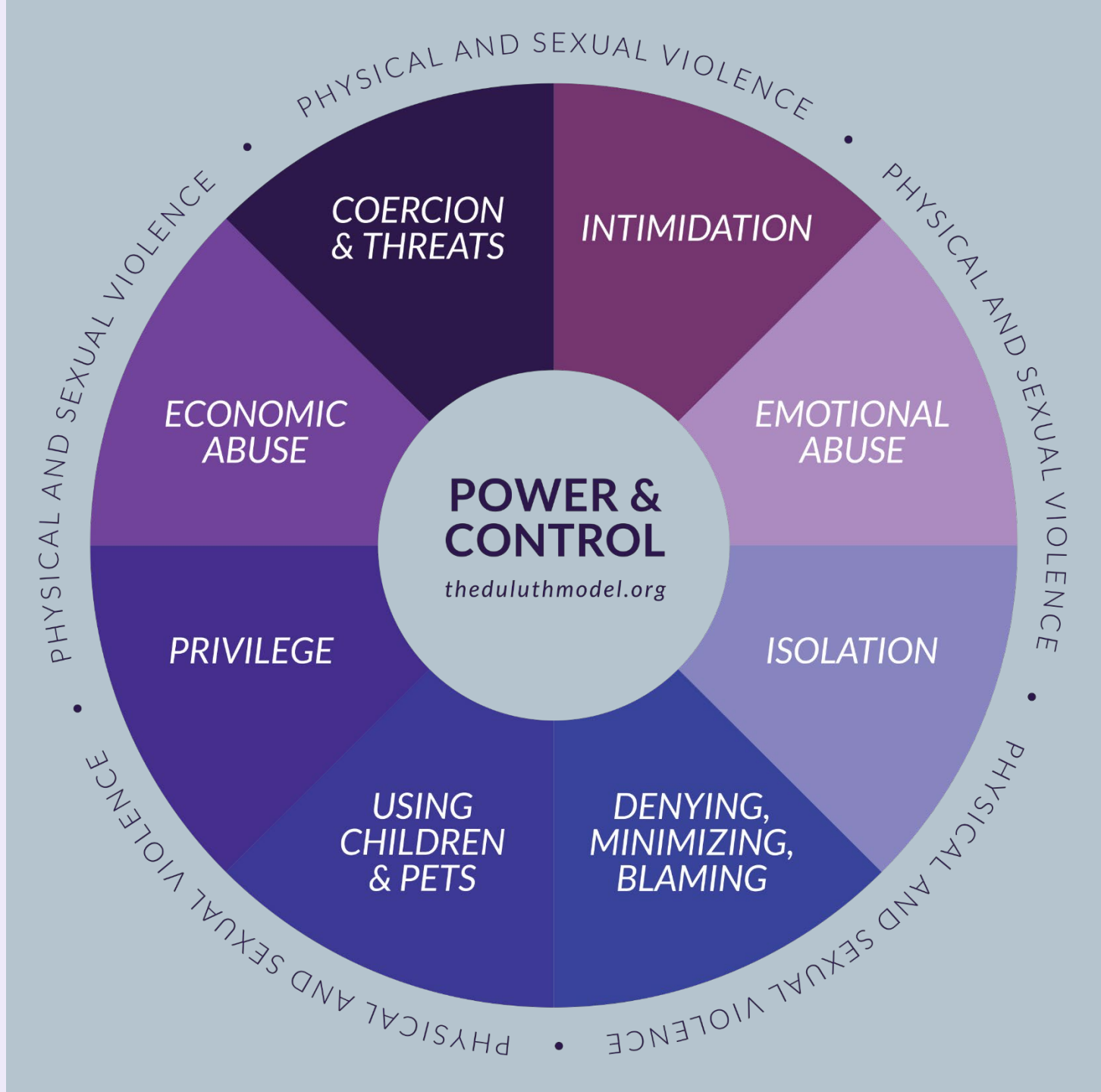




**Who is in the audience?**



# Understanding Power & Control Dynamics: When Intimate Partner Violence (IPV) and Substance Use Intersect







**Ten million** adults face intimate partner violence—while **two of three children** witness family violence between their parents or caregivers each year.

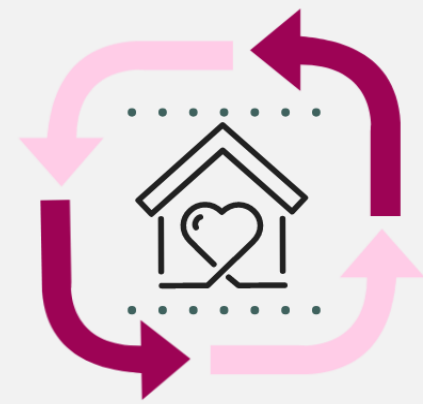
Of those who experience intimate partner violence

**26%**

used substances as **a coping mechanism** for IPV dynamics

**27%**

were **forced or pressured** to use substances or use more than they wanted to

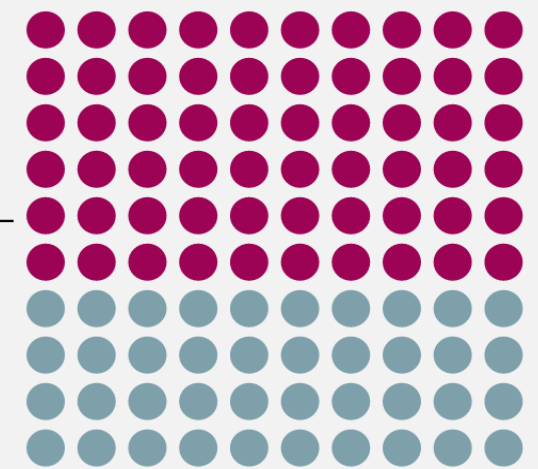


**37.5%**

received threats from their **partner** that their substance use would be reported to employers, law enforcement agencies, or child protective services

**15.2%** acknowledged trying to seek treatment but of the 15.2%

**60%** were **prevented or discouraged** from their partner





# Intimate Partner Violence

Family Safety &  
Well-being

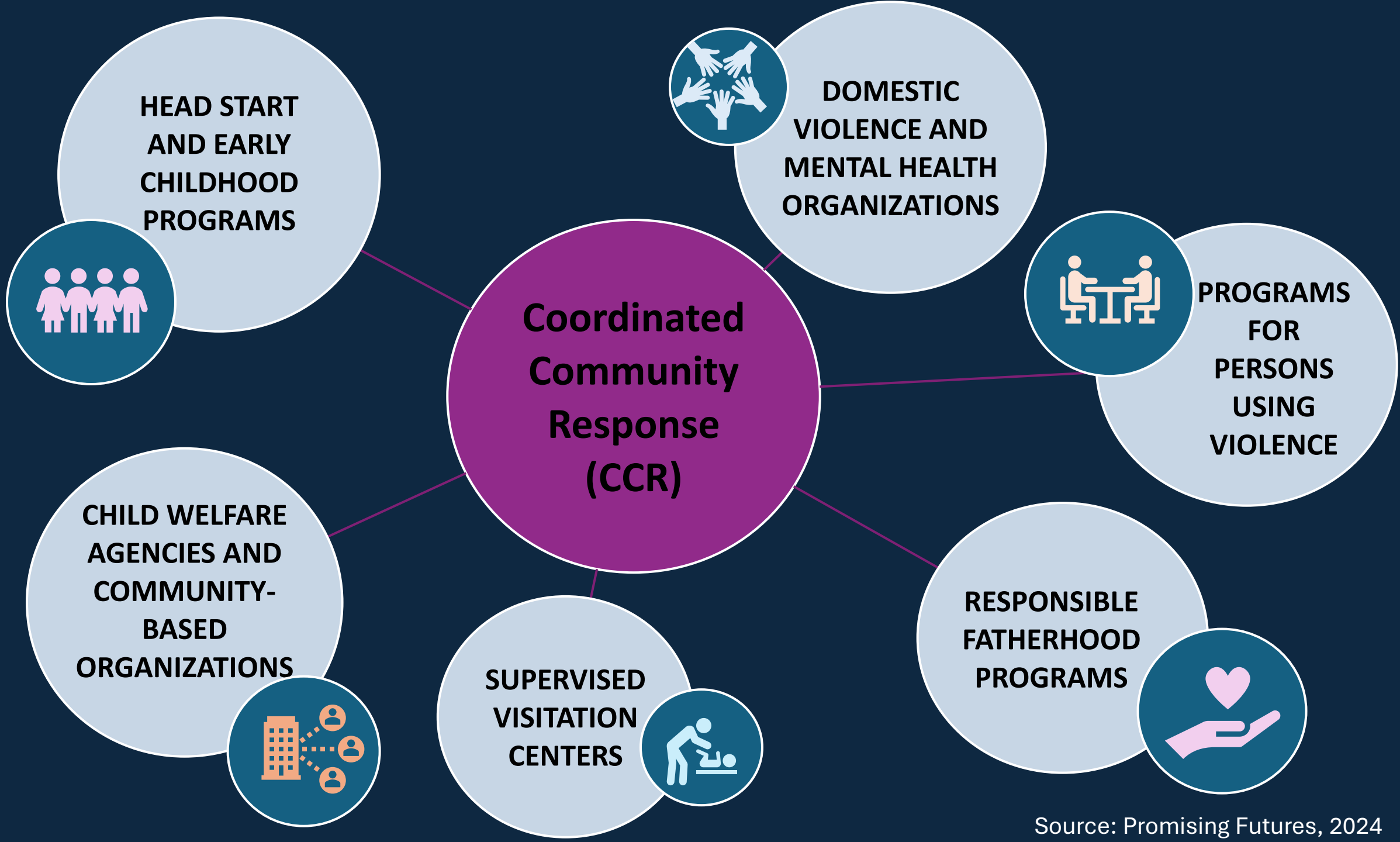
Parental Substance Use

A background graphic consisting of several white cylindrical nodes connected by thin white lines, forming a network or web-like structure. The nodes are arranged in a roughly rectangular pattern with some diagonal connections. The background is a gradient of colors, transitioning from purple on the left to blue on the right, and then to a mix of purple and orange at the bottom.

# **Promoting Wellness & Healing for Families Affected by Interpersonal Violence**



# *Collaborative Partnerships*



# Approaches to Strengthen Partnerships in Communities

Assess  
community needs

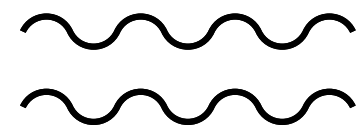
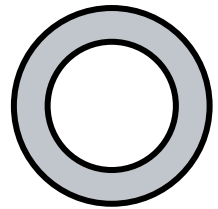
Engage diverse  
partners and  
perspectives

Form an Advisory  
Council

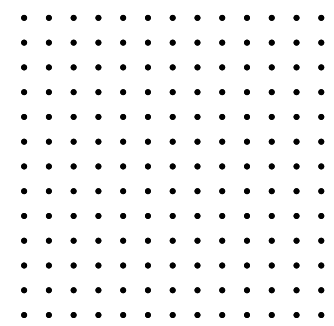
Develop common  
vision and  
principles

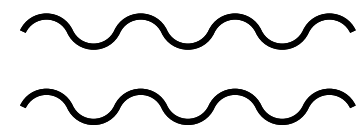
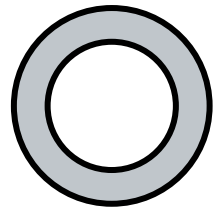
Provide  
cross-training

Create  
communication  
and referral  
protocols

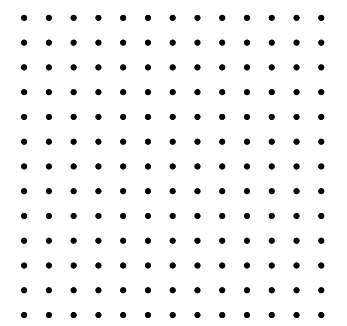


What is the court's role  
in convening  
improved interagency  
coordination?





**Who**  
*needs to know*  
**what and**  
**when?**







# *Policy & Practice Improvements*





# Policy & Practice Improvement Strategies

Early identification and engagement

Communication and reporting protocols

Trauma-informed practices

Integration of survivor advocates or peer advocates

Physical and psychological safety of families in court hearings

Domestic violence education and professional development training



# Adult & Child Survivor Centered Principles to Inform Policy & Practice

Collaboration

Connectedness

Planning with  
Survivors

Unique  
Strengths and  
Challenges

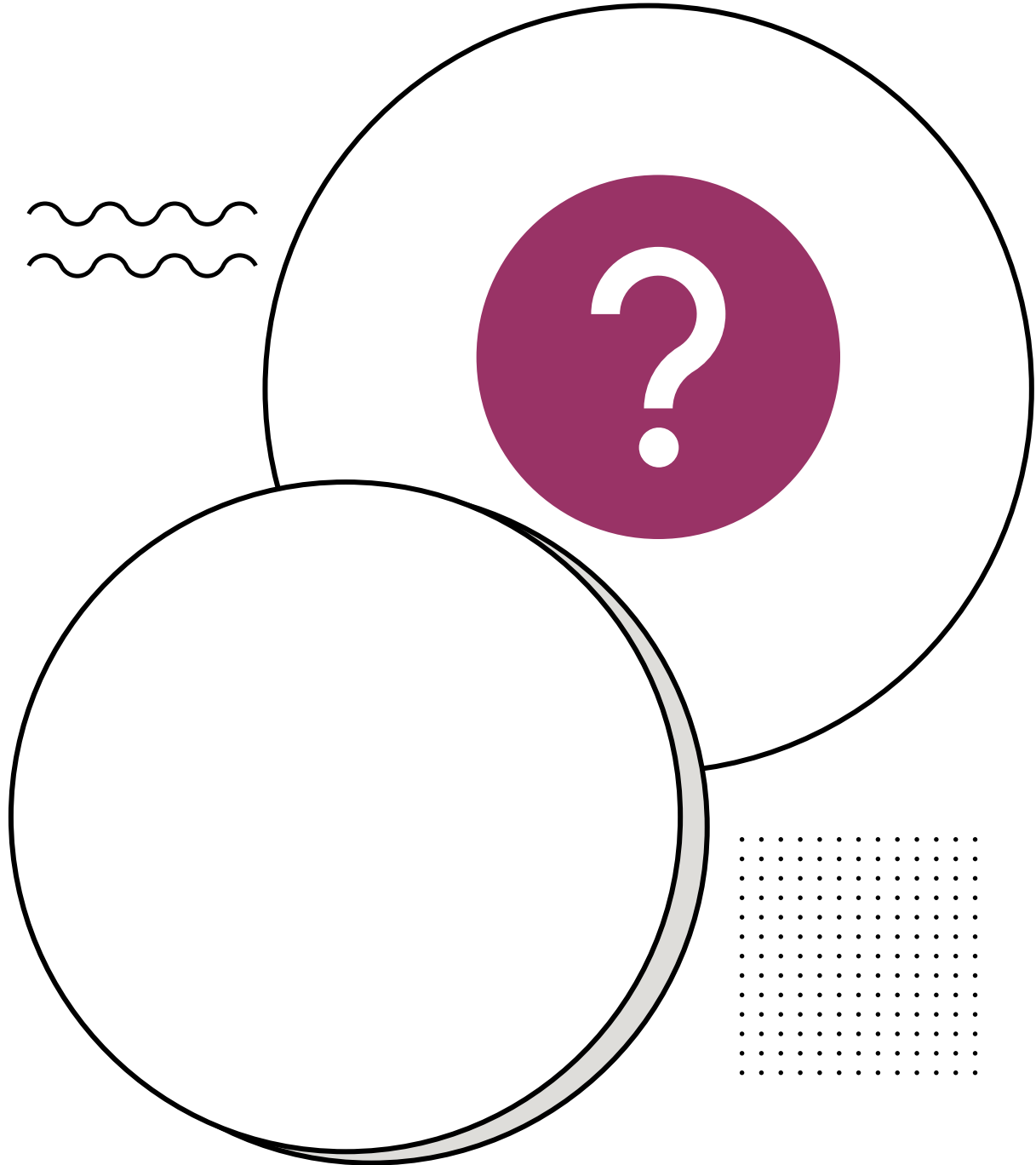
Equity

Healing and  
Well-being

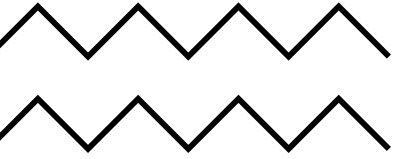
# Benefits of Integrating Survivor Voices and Perspectives

- Lived expertise and knowledge of risk
- Increased engagement in safety and service planning
- Empowerment and agency
- Builds relationships and trust
- Survivor advocates increase peer support and access to resources





What protocols  
guide your  
practice with  
children, parents,  
and families  
experiencing  
violence?

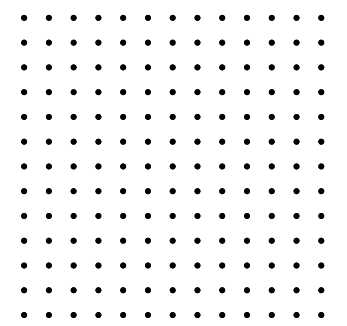
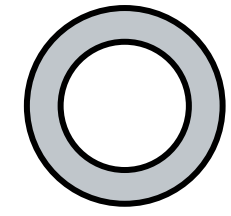
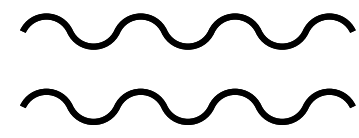


What do you wish you could change or implement to further promote trauma-informed practices?





If a jurisdiction is interested in implementing protocols that address family violence concerns, what should they consider and where should they start?



The background of the slide is a repeating pattern of hearts in various colors including yellow, green, pink, and blue. A dark teal horizontal band is overlaid across the center of the image.

***Increased Safety & Protective Capacities***





# Engagement & Case Planning Considerations for Persons Using Violence

---

**Holistic Assessment**

---

**Civil and Criminal Orders**

---

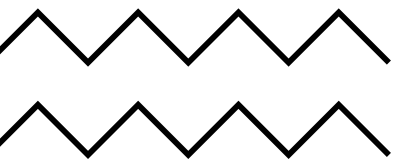
**Accountability-focused Case Plan**

---

**Ongoing Support**

Source: Promising Futures, 2024





# Engagement & Case Planning Considerations for Persons Experiencing Violence

---

**Proper Identification &  
Intervention**

---

**Increasing Safety &  
Protective Capacities**

---

**Centering Survivor Voice &  
Choice**

---

**Ongoing Support**





# Engagement & Case Planning Considerations for Children Exposed to Family Violence

---

Safety & Risk Assessment

---

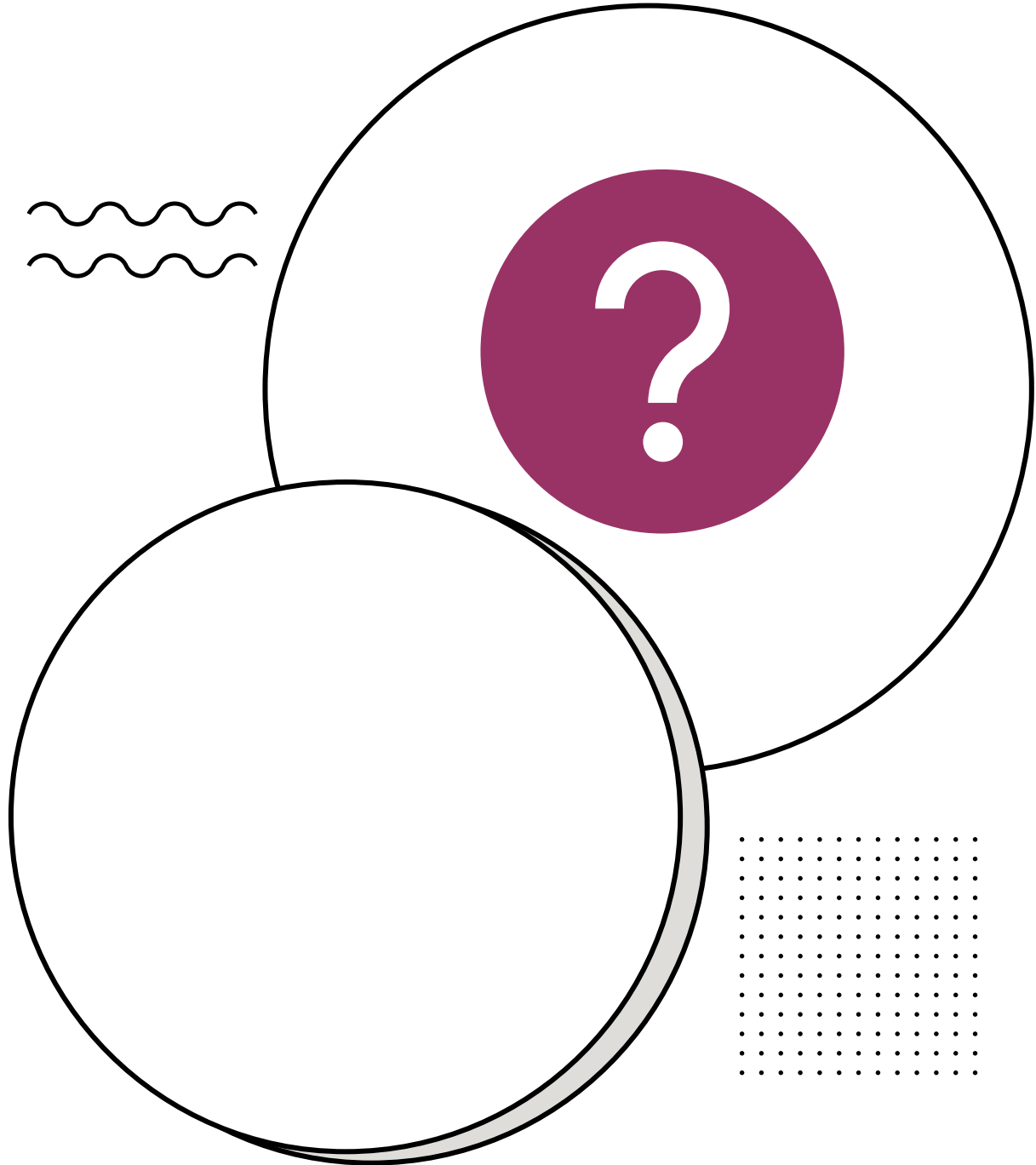
Violence Exposure & Traumatic Stress

---

Nurturing Parent-Child Interactions

---

Trauma-Responsive & Evidenced-Based Interventions



What support services is your team providing to adult and child survivors, and the person using violence?



# Safety and Engagement Plans

---

**Adult Survivor Safety**

---

**Child Safety**

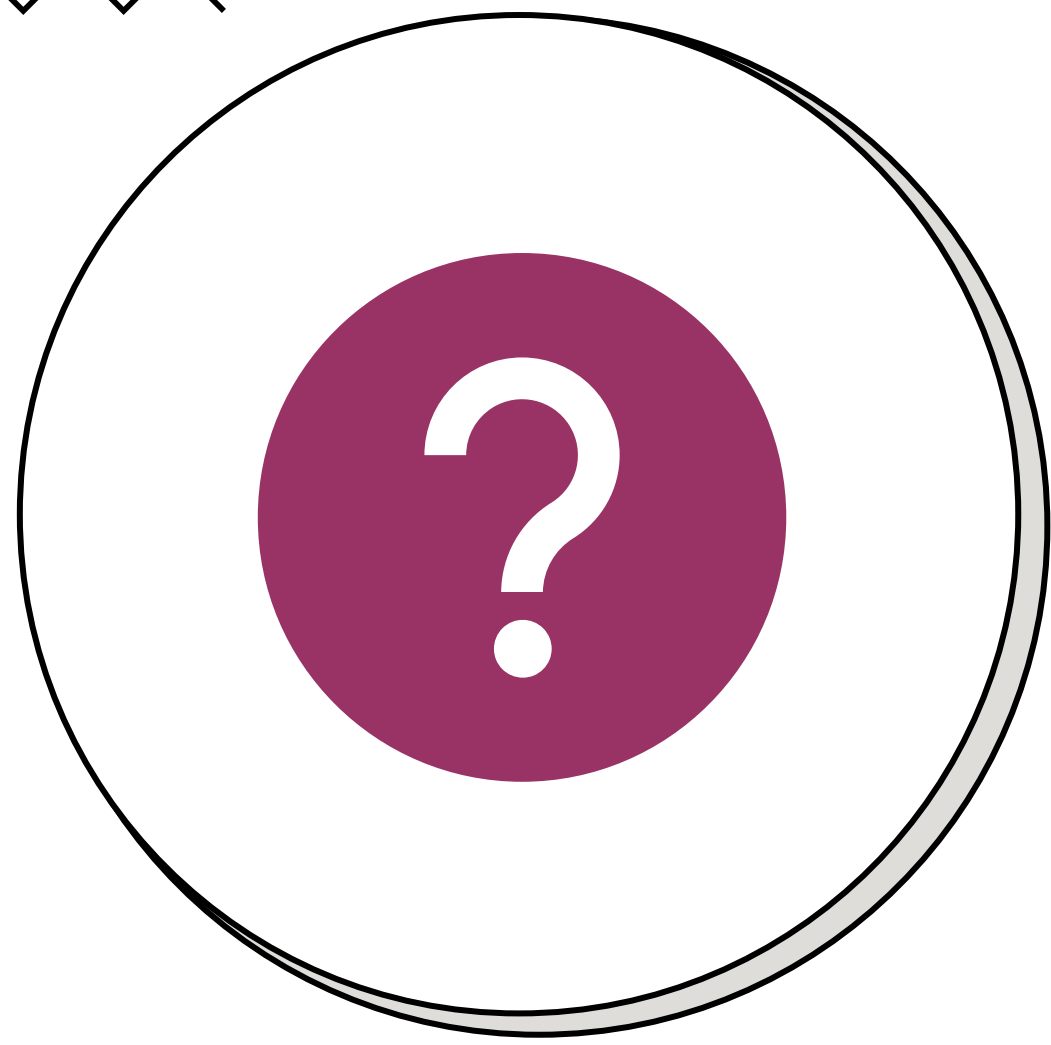
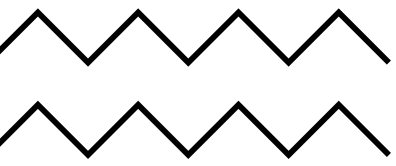
---

**Recovery Maintenance**

---

**Person Using Violence  
Accountability**





How do you engage a parent using violence for their own individual safety plan? What does this process involve? How is the safety of the other parent or caregiver and children addressed? // // //

# Key Takeaways



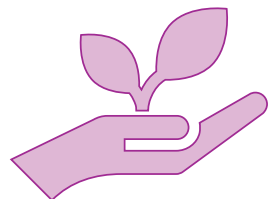
## Collaborative Partnerships

- Coordinated case planning
- Cross-systems training



## Policy & Practice Improvements

- Trauma-informed
- Support services for each person



## Increased Safety & Protective Capacities

- Centering voice & choice
- Quick access to services



**Follow us**  
**Tag us**



**#CFF**

**Children and Family Futures**

[linkedin.com/company/children-and-family-futures](https://www.linkedin.com/company/children-and-family-futures)





# CENTER FOR CHILDREN AND FAMILY FUTURES

Strengthening Partnerships, Improving Family Outcomes

## Join Our CCFF listserv

<https://www.cffutures.org/membership-join/newsletter/>



## Visit Our Website

<http://www.cffutures.org>



## Join Our FTC TTA Program listserv

Email us: [FTC@cffutures.org](mailto:FTC@cffutures.org)





**CENTER FOR CHILDREN AND FAMILY FUTURES**  
Strengthening Partnerships, Improving Family Outcomes



# Contact Us

Center for Children and Family Futures

National FTC TTA Program

[www.cffutures.org](http://www.cffutures.org)

[FTC@cffutures.org](mailto:FTC@cffutures.org)



# References

- Blumenfeld, S. & Baca, J. (2021). *Family-centered toolkit for domestic violence programs*. National Center on Domestic Violence, Trauma, and Mental Health. <https://ncdvtmh.org/wp-content/uploads/2022/10/NCDVTMH-Family-Centered-Toolkit.pdf>
- Bosk, E.A., Van Scoyoc, A., Mihalec-Adkins, B., Conrad, A., Hanson, K., & Chaiyachati, B. H. (2022). Integrating responses to caregiver substance misuse, intimate partner violence and child maltreatment: Initiatives and policies that support families at risk for entering the child welfare system. *Aggression and Violent Behavior*, 65(101637), 1359-1789. <https://doi.org/10.1016/j.avb.2021.101637>
- Child Welfare Information Gateway. (2020). *Domestic violence: A primer for child welfare professionals*. U.S. Department of Health and Human Services, Administration for Children and Families, Children's Bureau. [https://cwig-prod-prod-drupal-s3fs-us-east-1.s3.amazonaws.com/public/documents/domestic\\_violence.pdf](https://cwig-prod-prod-drupal-s3fs-us-east-1.s3.amazonaws.com/public/documents/domestic_violence.pdf)
- Elliot, L. (2003). Interpersonal violence: Improving victim recognition and treatment. *Journal of General Internal Medicine*, 18(10), 871-872. <https://doi.org/10.1046%2Fj.1525-1497.2003.30702.x>
- Evident Change. (2023, February 8). To end disproportionality in child protection, here's where to look. *Evident Change*. <https://evidentchange.org/blog/to-end-disproportionality-in-child-protection-heres-where-to-look/>

# References

- Futures Without Violence. (2024). *Get the facts*. <https://www.futureswithoutviolence.org/resources-events/get-the-facts/>
- Harrison, O. (2021). The long-term effects of domestic violence on children. *Child Legal Rights Journal*, 41(1), 63. <https://lawcommons.luc.edu/clrj/vol41/iss1/7>
- Hawrin, J. & Barlow, C. (2022). The co-occurrence of substance misuse, domestic abuse, and child maltreatment: Can family drug and alcohol courts play a part? *Front Psychiatry*. <https://doi.org/10.3389/fpsy.2022.989813>
- Head Start, Early Childhood Learning Knowledge Center. (March). *Domestic violence and child abuse reporting*. U.S. Department of Health & Human Services, Administration for Children & Families. <https://eclkc.ohs.acf.hhs.gov/publication/domestic-violence-child-abuse-reporting>
- Mason, R., & O'Rinn, S. E. (2014). Co-occurring intimate partner violence, mental health, and substance use problems: A scoping review. *Global Health Action*, 7, 24815. <https://doi.org/10.3402/gha.v7.24815>
- Promising Futures. (2024). *Get the facts about family violence*. Futures Without Violence. <https://promising.futureswithoutviolence.org/get-the-facts-about-family-violence/>

# References

National Coalition Against Domestic Violence. (2023). *Domestic violence & children* [Fact sheet].

[https://assets.speakcdn.com/assets/2497/dv\\_and\\_children.pdf](https://assets.speakcdn.com/assets/2497/dv_and_children.pdf)

National Domestic Violence Hotline. (n.d.). *Abuse in immigrant communities*.

<https://www.thehotline.org/resources/abuse-in-immigrant-communities/>

Quality Improvement Center on Domestic Violence in Child Welfare. (2019). *Relational and systemic accountability for persons who use violence*. [https://www.futureswithoutviolence.org/wp-content/uploads/Relational-and-Systemic-](https://www.futureswithoutviolence.org/wp-content/uploads/Relational-and-Systemic-Accountability.pdf)

[Accountability.pdf](https://www.futureswithoutviolence.org/wp-content/uploads/Relational-and-Systemic-Accountability.pdf)

Quality Improvement Center on Domestic Violence in Child Welfare. (2019). *The adult & child survivor-centered approach for addressing domestic violence*. <https://cssp.org/wp-content/uploads/2019/06/Overview-of-ACSCA.pdf>

UCLA Pritzker Center. (2021). *Child welfare and domestic violence: The report on intersection and action*.

<https://pritzkercenter.ucla.edu/wp-content/uploads/2021/05/Pritzker-Domestic-Violence-Report->

[Endnotes\\_final.pdf](https://pritzkercenter.ucla.edu/wp-content/uploads/2021/05/Pritzker-Domestic-Violence-Report-Endnotes_final.pdf)

# References

- Warshaw, C., & Tinnon, E. (2018). *Coercion related to mental health and substance use in the context of intimate partner violence: A toolkit for screening, assessment, and brief counseling in primary care and behavioral health settings*. National Center on Domestic Violence, Trauma & Mental Health. [http://www.nationalcenterdvtraumamh.org/wp-content/uploads/2018/03/NCDVTMH\\_MHSUCoercionToolkit2018.pdf](http://www.nationalcenterdvtraumamh.org/wp-content/uploads/2018/03/NCDVTMH_MHSUCoercionToolkit2018.pdf)
- Zapata-Alma, GA. (2020). *Committed to safety for all survivors: Guidance for domestic violence programs on supporting survivors who use substances*. National Center on Domestic Violence, Trauma, and Mental Health. <https://ncdvtmh.org/wp-content/uploads/2022/10/Committed-To-Safety-Final.pdf>