

# MONTANA JUDICIAL BRANCH

## ***Youth Court At-A-Glance***

January 2017 through December 2017



MONTANA SUPREME COURT  
**Office of the Court Administrator**  
301 South Park Ave., STE 328  
Helena, Montana 59620  
(406) 841-2950

# JUVENILE JUSTICE OVERVIEW

Juveniles usually enter the juvenile justice system through contact with law enforcement, although they may be referred to juvenile probation by other agencies and parents. Juvenile probation is an integral part of the Youth Court and is overseen by the Youth Court judge within each of the 22 Judicial Districts. Most referrals to the Youth Court's juvenile probation office are in the form of a ticket accompanied by a report from law enforcement. Juvenile probation officers may handle any referral except traffic and fish and game violations, which fall under the jurisdiction of the Justice, Municipal, City, and District Courts.

Youth referred to probation must appear in front of the juvenile probation officer with a parent or guardian to answer to the allegations against them. Most youth will never see the Youth Court judge and will work solely through the Youth Court juvenile probation officer to resolve the ticket in what is referred to as the informal process. If the referral is forwarded to the county attorney and a petition is filed on the alleged charges, the youth will appear before the Youth Court judge in what is referred to as the formal process. Approximately 10% of the youth referred to juvenile probation each year are handled formally.

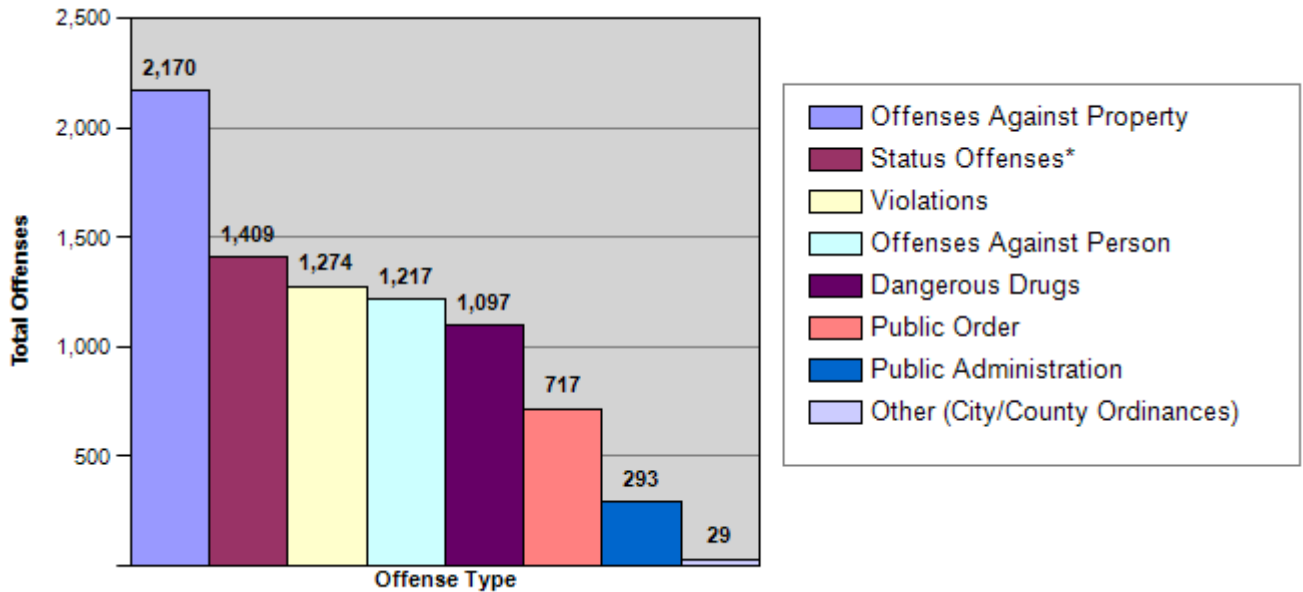


Juvenile Justice

# REFERRALS TO MONTANA'S YOUTH COURTS

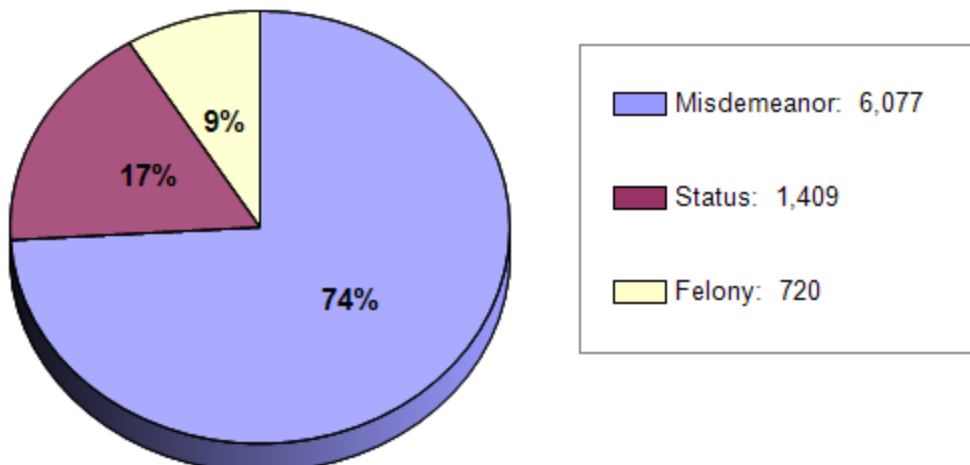
Youth Referred to Youth Court	3,660
Referrals (a youth may have multiple referrals)	5,469
Offenses (a referral may have multiple offenses)	8,206

## OFFENSE CATEGORIES

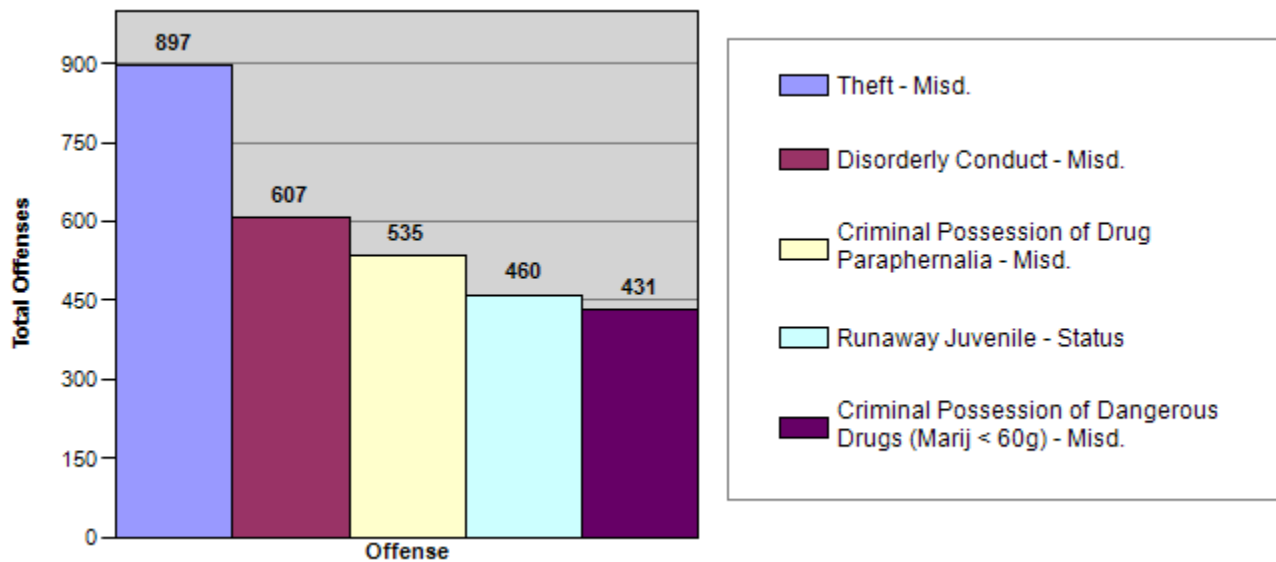


\*These are matters that are offenses because of the youth's age and include such things as a minor in possession of alcohol, truancy, curfew or a run-away violation.

## OFFENSE CLASSIFICATIONS

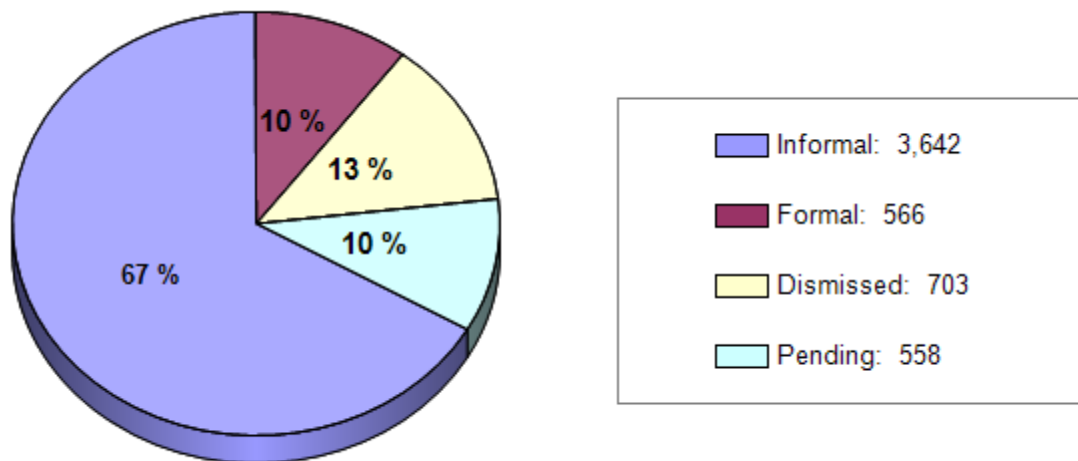


# FIVE MOST FREQUENT OFFENSES ASSOCIATED WITH REFERRALS TO JUVENILE PROBATION



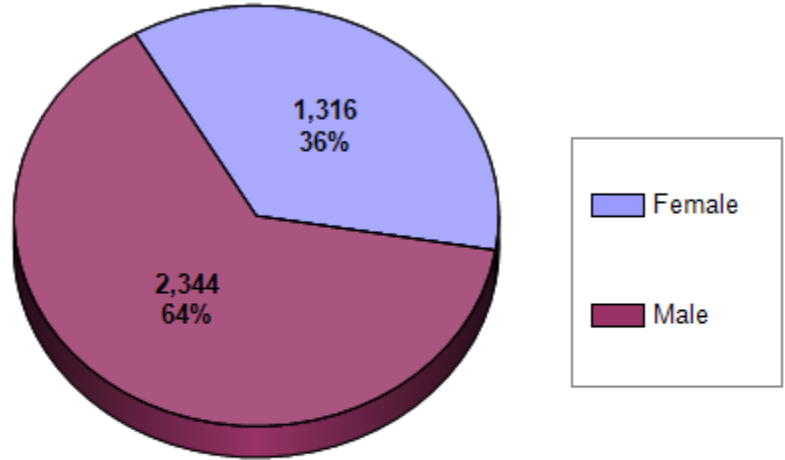
# TYPE OF DISPOSITION USED

- Informal:** Referral handled by juvenile probation officer
- Formal:** Referral in which youth appears before Youth Court judge
- Dismissed:** Referral in which case is dismissed by juvenile probation officer or county attorney
- Pending:** Referral awaiting action from the county attorney's office, requires further investigation by law enforcement, or a ticket has been issued and juvenile probation is waiting to see the youth and parent(s).

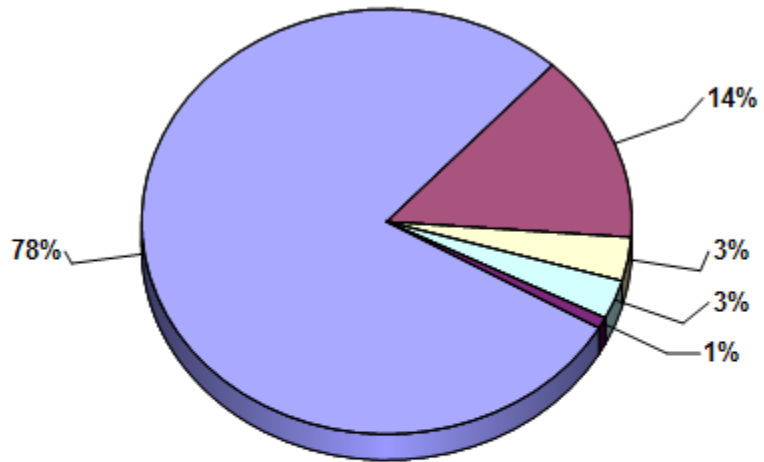


# YOUTH DEMOGRAPHICS

## GENDER



## RACE

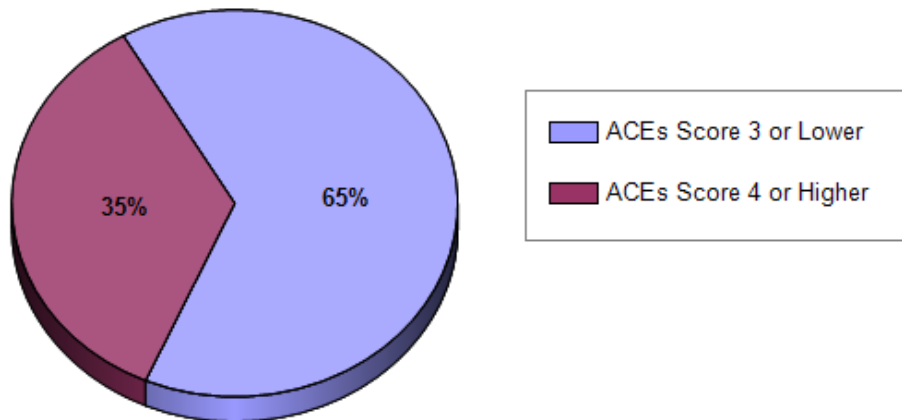


Caucasian: 2,873	Hispanic: 122	Other: 31
Native American: 525	Black: 109	

\* Total of percentages may be slightly off due to rounding.

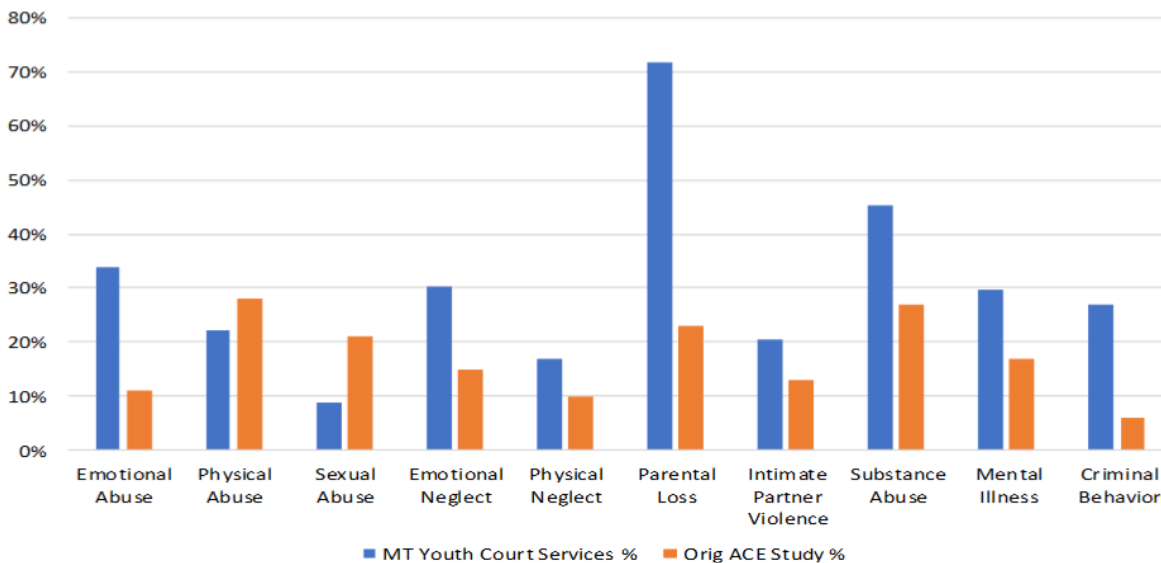
# ACEs AND MONTANA'S YOUTH COURTS

The CDC's Adverse Childhood Experiences Study (ACEs) uncovered a significant link between childhood trauma and the chronic diseases people develop as adults, as well as social and emotional problems. In July, 2016 the Montana Youth Court Services Division introduced the ACEs tool into our assessments to assist in identifying additional risk factors in the population we serve. A high ACEs score (4 or more) has been proven to increase the likelihood of failing grades, drug and alcohol use and mental health problems. For those circumstances in which a youth receives an ACEs score of 4 or more, the supervising probation officer is directed to use a trauma-informed approach in their case-planning.



# COMPARING YOUTH COURTS ACEs SCORES

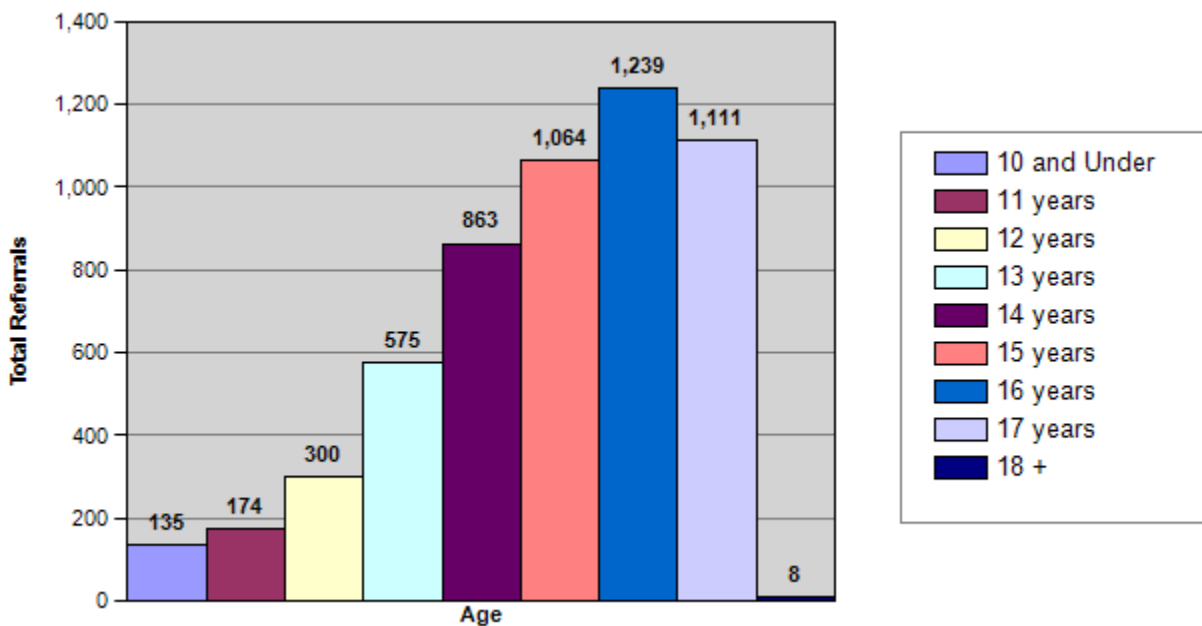
The Office of Court Administration Youth Court Services Division has partnered with the ChildWise Institute to further analyze ACEs characteristics in the population we serve. The graph below is a representation of how youth in MT Youth Court Services compare to the original ACEs study in the ten risk factors identified by the ACEs tool.



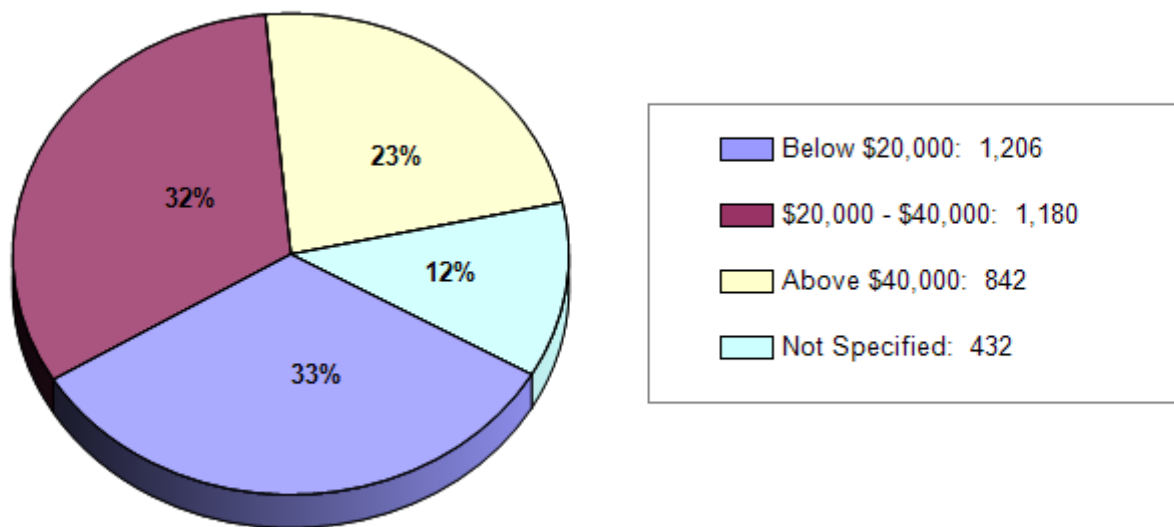
The above information is from 3,501 complete assessments collected from 6/29/16 - 2/16/18.

\* Additional analysis of this data is being conducted by the ChildWise Institute and will be made available once completed to the Montana Office of Court Administrator.

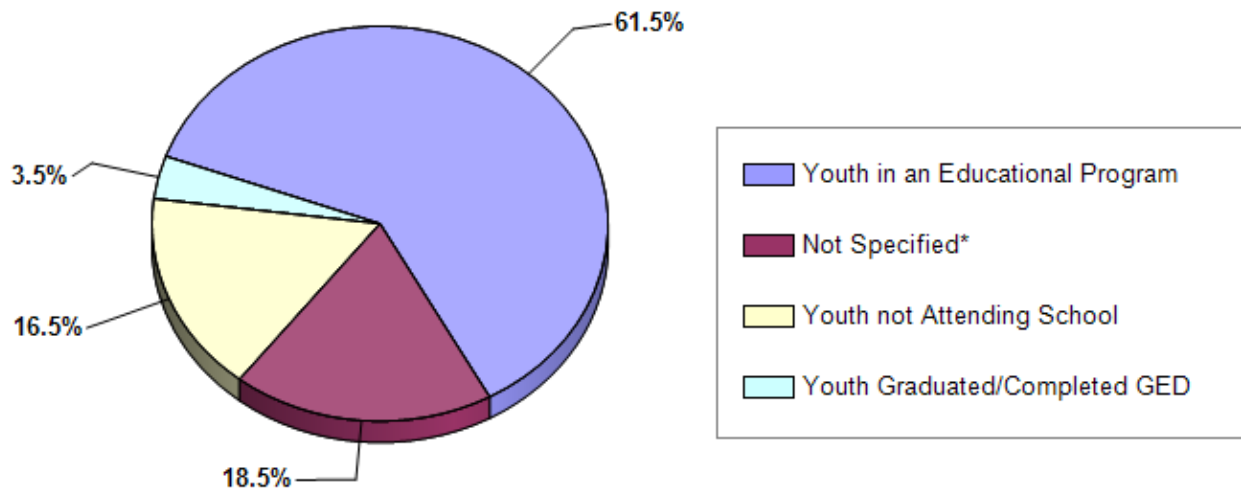
## AGE AT TIME OF OFFENSE



## FAMILY'S HOUSEHOLD INCOME



# SCHOOL PARTICIPATION



*\* These are likely youth who are in an educational program but did not provide enough information at the time of intake. The Youth Court Services division will be making adjustments to the reporting tool which should allow for a more accurate representation on the next report.*



# RESTORING JUSTICE TO VICTIMS AND HOLDING OFFENDERS ACCOUNTABLE

## LENGTH OF DISPOSITION

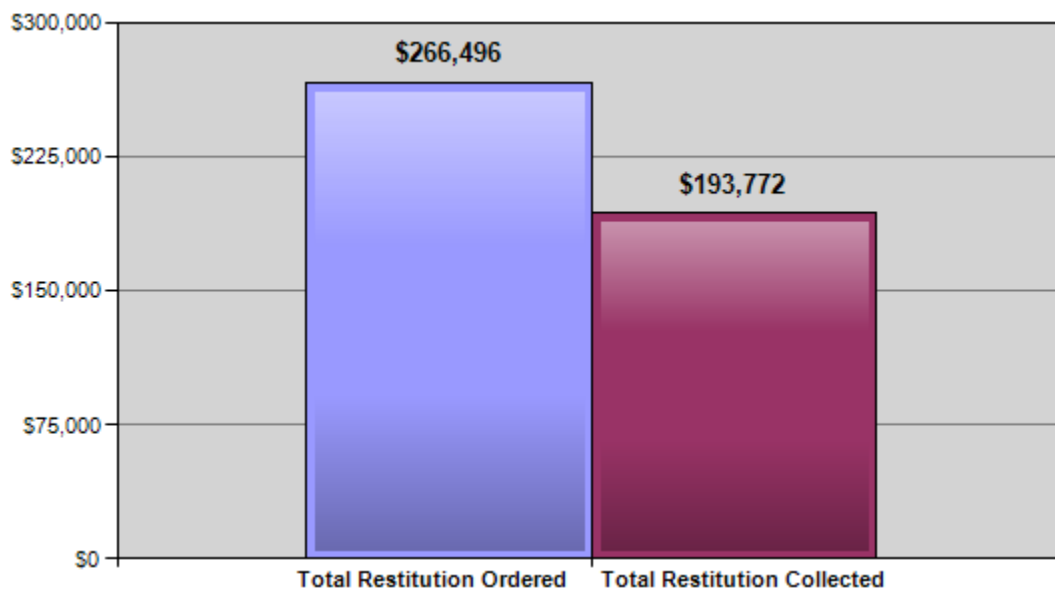
Every referral has a disposition, which is the equivalent to an adult sentence handed down by a Judge.

0-30 days:	1,516
31-90 days:	922
+90 days:	2,473

*\* Includes all dispositions except Pending because those referrals don't yet have a disposition end date.*

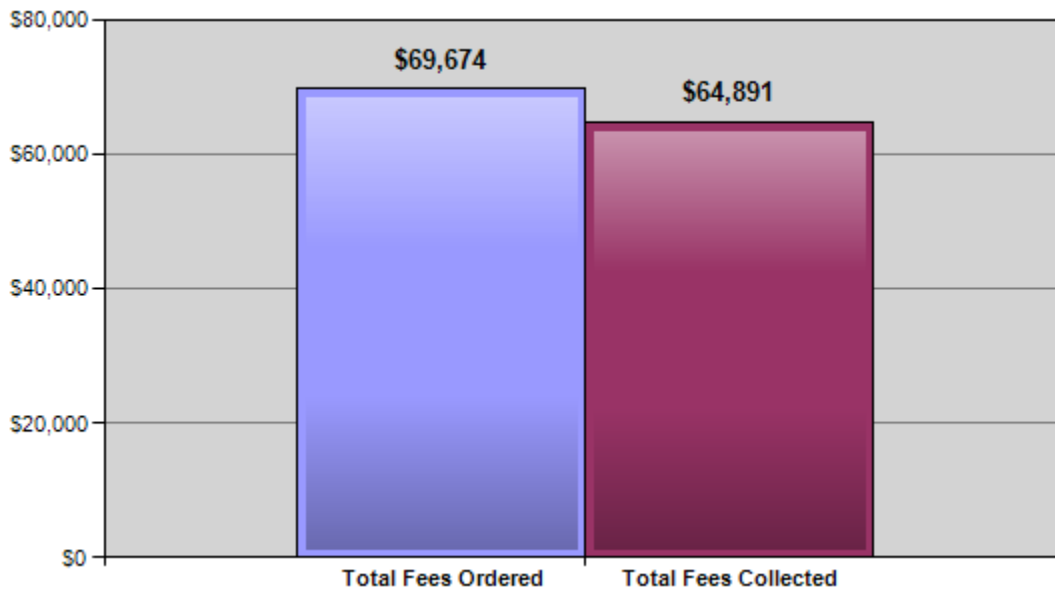
## RESTITUTION

Number of Youth Ordered to Pay Restitution: 375



# FEES

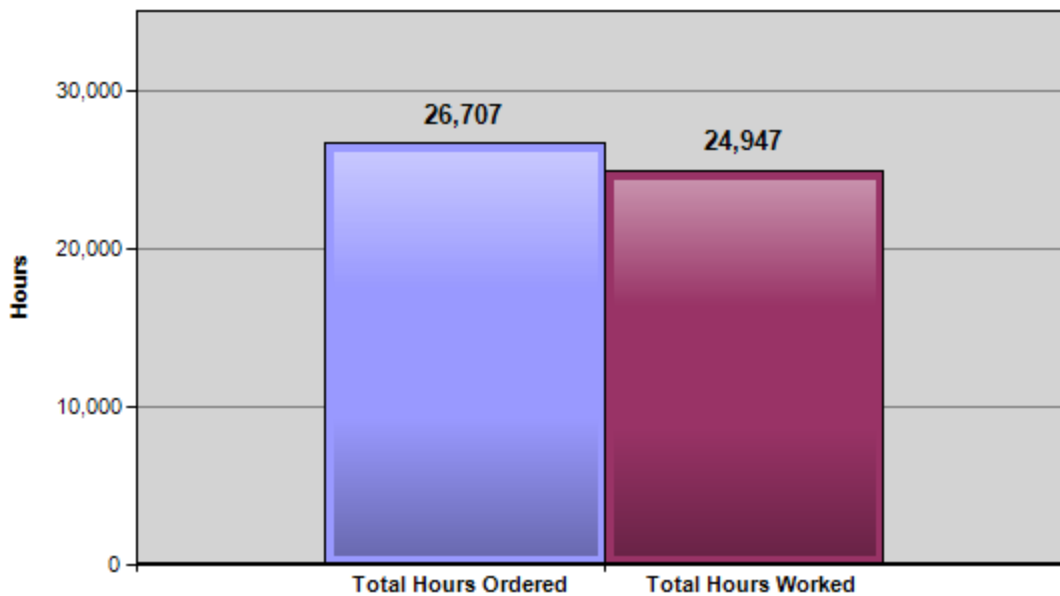
Number of Youth Ordered to Pay Fees: 1,247



*\* Fees used to offset cost of drug testing, workers' compensation, and other services*

# COMMUNITY SERVICE HOURS

Number of Youth Ordered to Complete Community Service: 1,194



## COMMUNITY SERVICE SWEAT EQUITY HOURS

Many youth are unable to contribute towards their restitution obligation because they have no family support, are not old enough to get a job, or lack the necessary social skills to get and keep a job. The Community Service Sweat Equity program is offered to youth as an opportunity, by utilizing community service, to earn restitution money to repay their victims.

Total Number of Youth that Worked Sweat Equity Hours:	149
Total Sweat Equity Hours Worked:	5,072.67
Total Money Earned to Pay to Victims:	\$41,343.20

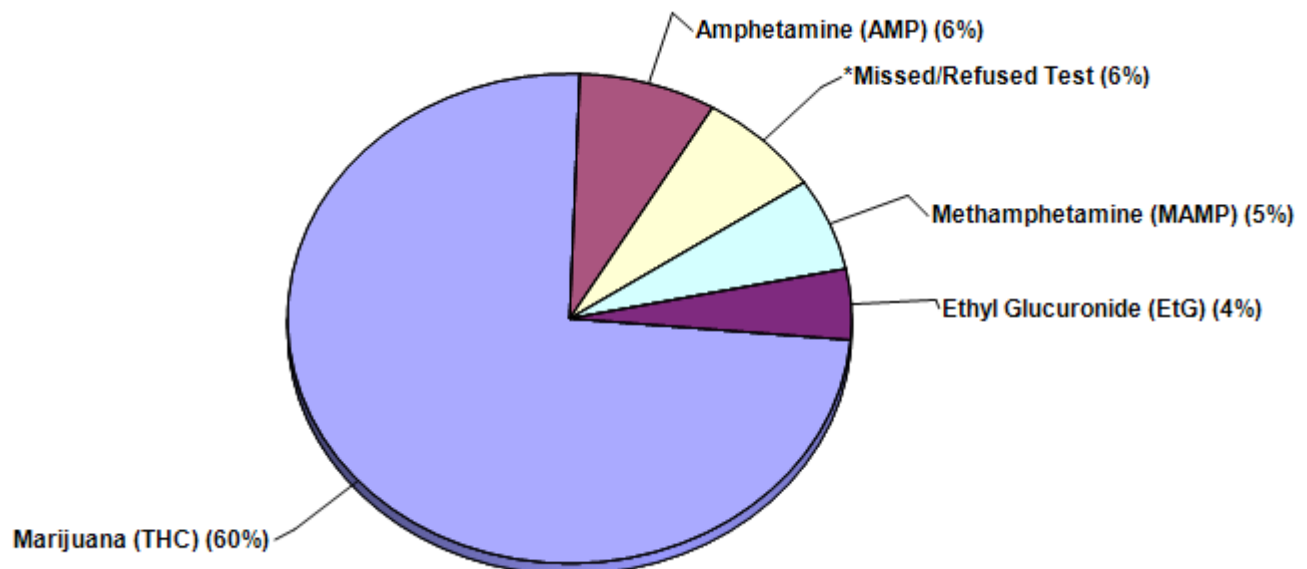
## RESISTANCE TO DRUGS

Offenders ordered to submit to drug testing are tested randomly, unless there is suspicion to believe the youth has recently been using. Youth in a drug treatment court may be required to test more often as required by the judge.

Total Number of Youth Drug Tested:	933
Total Number of Tests Administered:	5,128
Total Number of Youth Testing Positive:	545

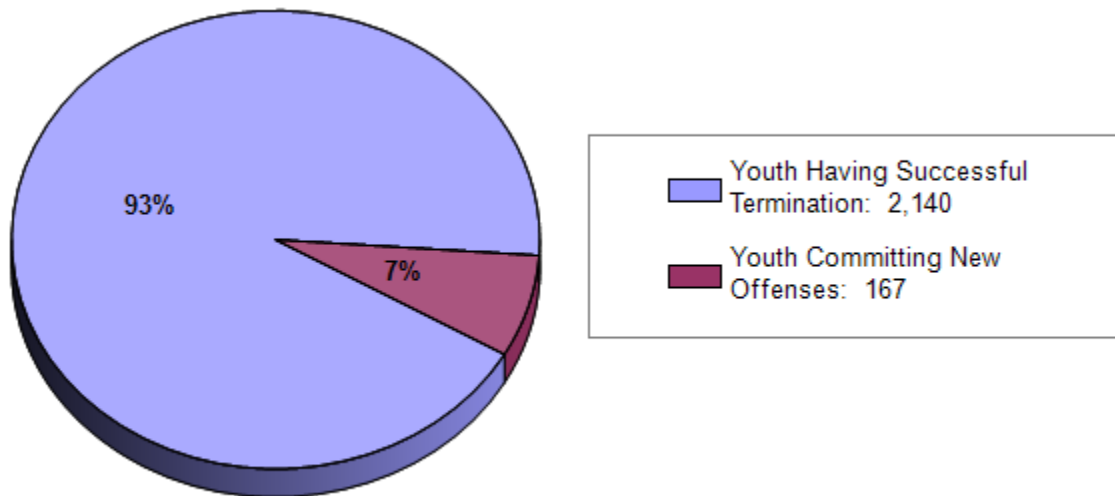
*\* A single youth may have tested positive multiple times*

## TOP FIVE DRUGS USED



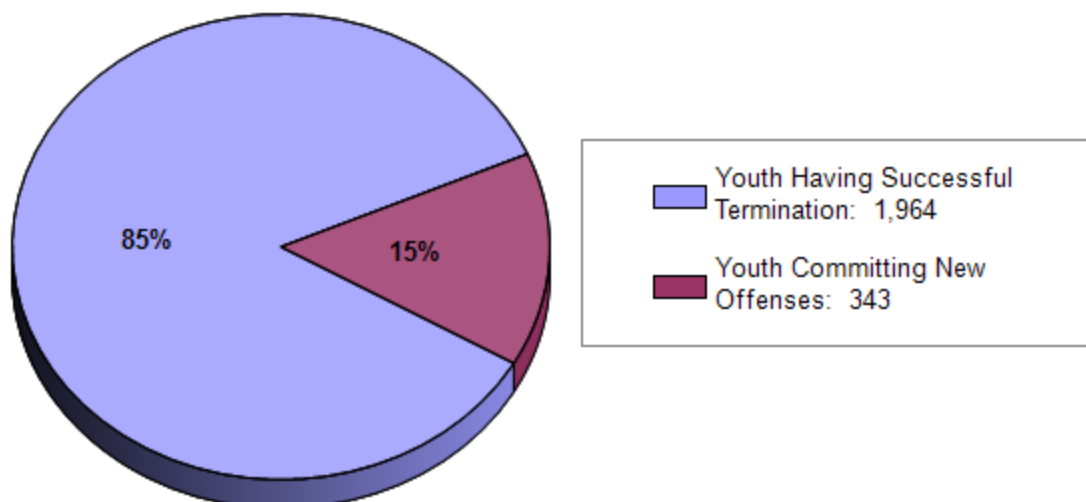
## RECIDIVISM WHILE UNDER SUPERVISION (UNDUPLICATED YOUTH NEW TO THE SYSTEM)

Recidivism on unduplicated youth that had their initial Intake in 2017 and committed a new offense prior to the disposition end date.



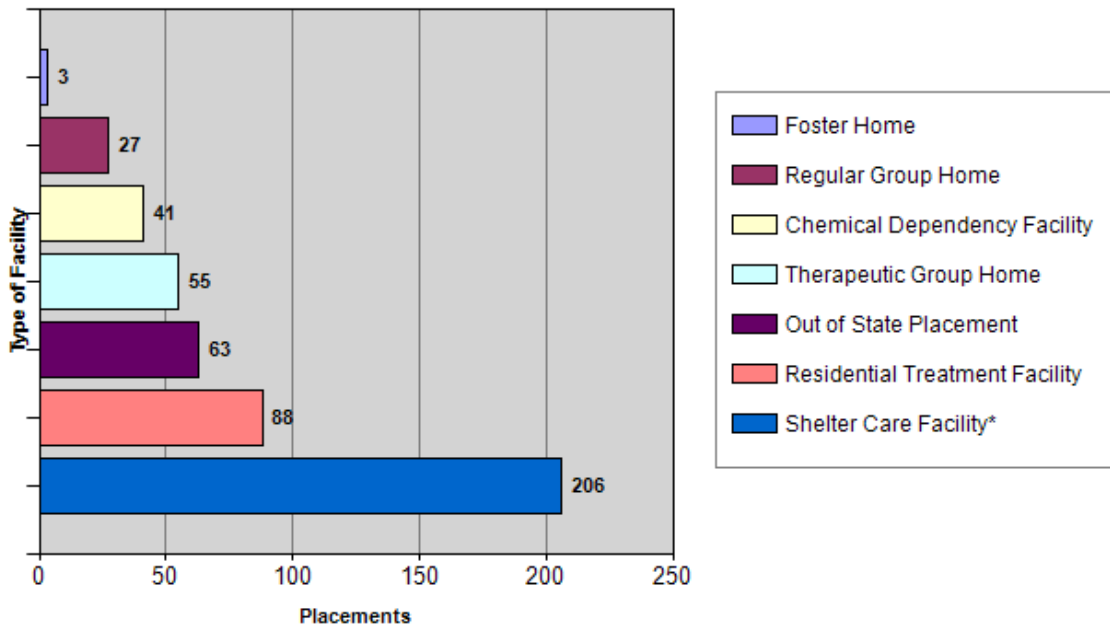
## RECIDIVISM WITHIN 1 YR AFTER CASE COMPLETION (UNDUPLICATED YOUTH NEW TO THE SYSTEM)

Recidivism on unduplicated youth that had their initial Intake in 2017 and committed a new offense within 1 year of the original disposition end date.



# OUT-OF-HOME PLACEMENTS

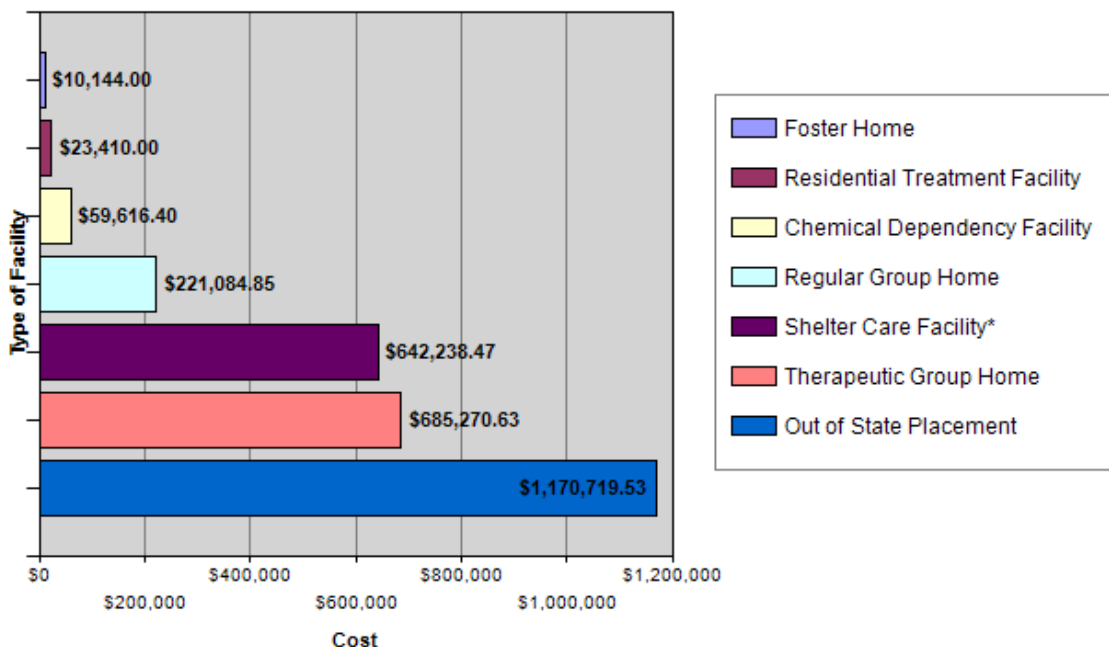
Out of 5,469 referrals to Youth Court, 483 resulted in out-of-home placements for this reporting year. Please note that a single youth may be placed multiple times.



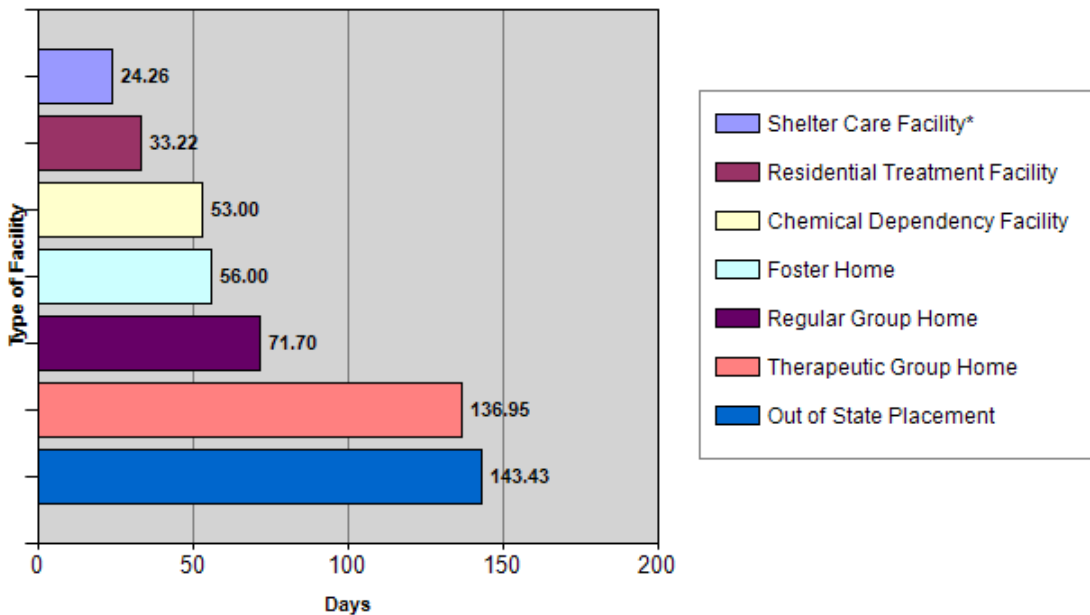
\* Shelter care, the most common placement, is a very short-term placement used when Youth Court is assessing the youth and family's situation.

# OUT-OF-HOME PLACEMENTS - COST

These are the general fund costs incurred by the Youth Courts of Montana and do not include additional funding sources and cost-shares that may have been made by collaborating agencies (Medicaid, DPHHS, CMHB).



# OUT OF HOME PLACEMENTS – AVG LENGTH OF STAY



# DETENTION

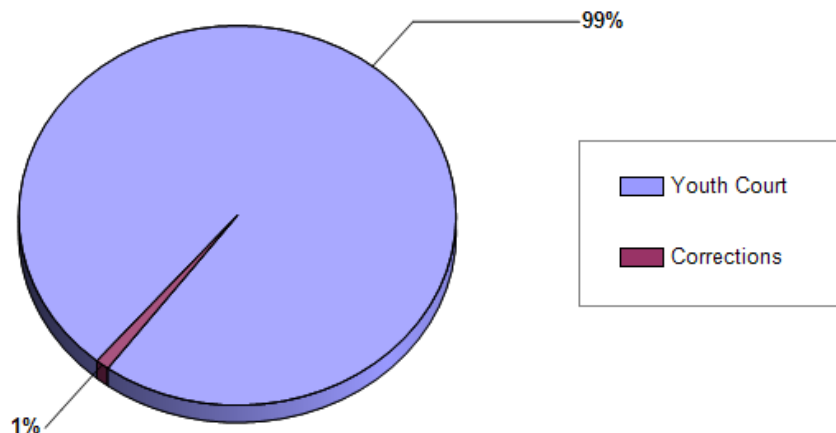
## Number of Youth Placed in Detention at Time of Arrest: 683

Youth detention facilities, which are physically restricting youth facilities designed to prevent a youth from departing at will are mostly funded and operated by counties. Local law enforcement officers make the decision to detain at the time of arrest. (Youth may be placed in detention on more than once.)

# DEPARTMENT OF CORRECTIONS COMMITMENTS

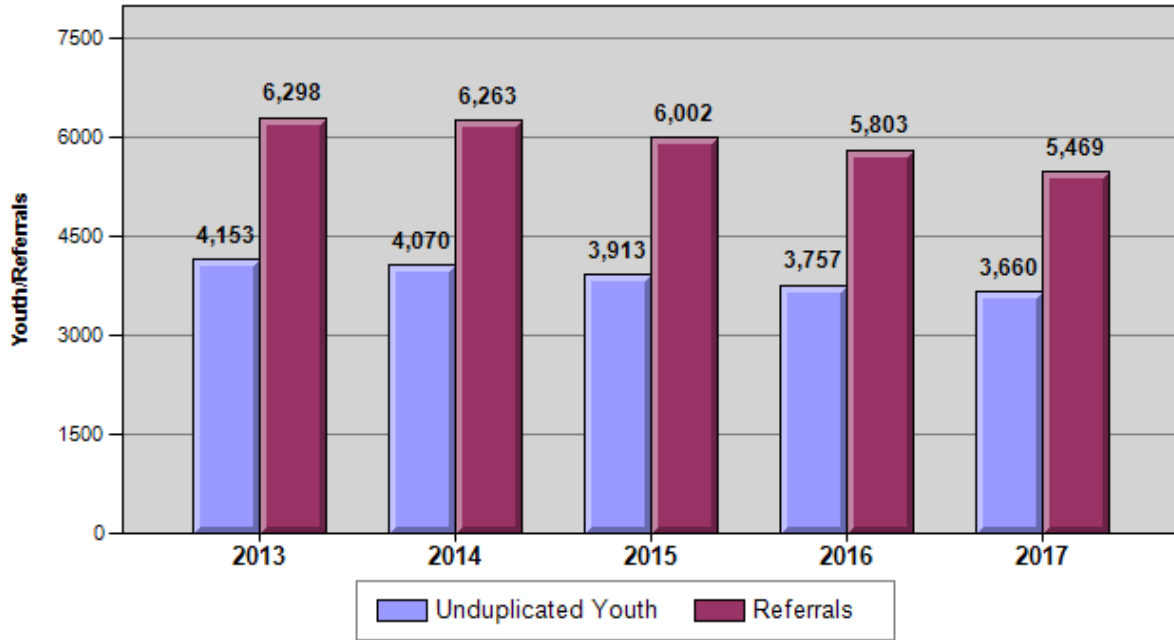
Only a Youth Court judge may sentence a youth to the Department of Corrections. Approximately 1% of all youth referred to juvenile probation are sentenced to the Department of Corrections.

Of the 3,660 youth referred to Youth Court, 37 were committed to the Department of Corrections for placement in a youth correctional facility.



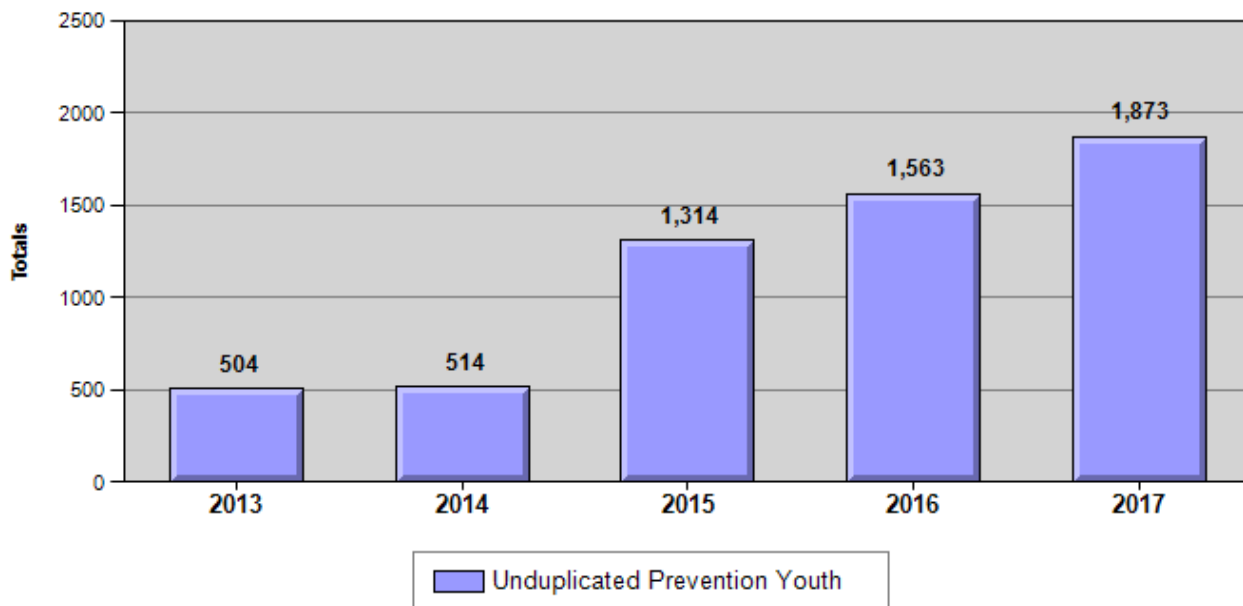
# 5 YEAR TRENDS

## UNDUPLICATED YOUTH AND REFERRALS

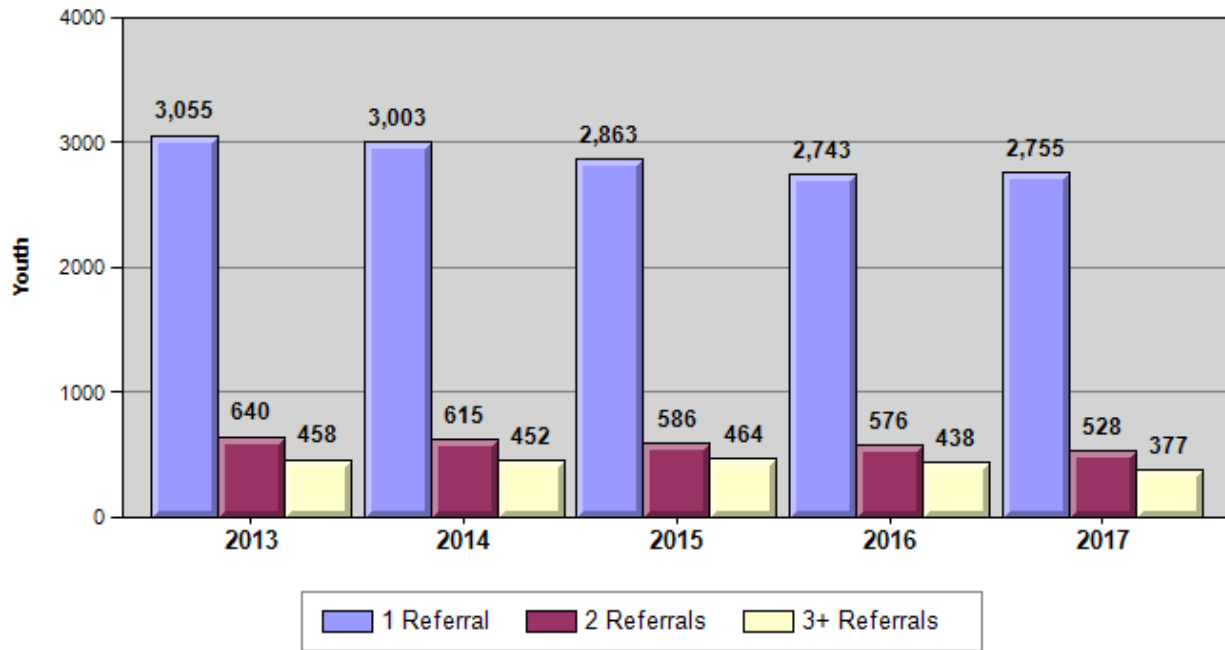


## UNDUPLICATED PREVENTION YOUTH

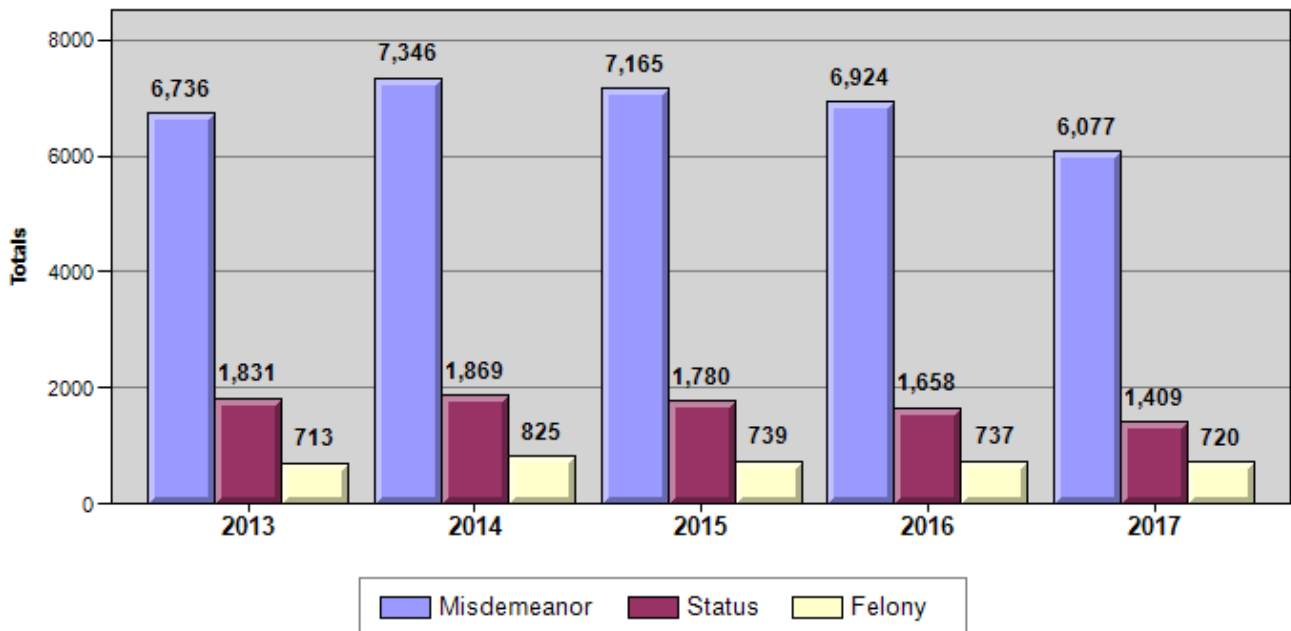
Through the State of Montana **Juvenile Delinquency Intervention Program (JDIP)**, judicial districts are provided the opportunity to develop prevention programs in which both youth referred to youth court services, as well as at-risk youth who have not come into contact with probation, can access services that promote positive growth and development. This graph identifies those prevention youth



# NUMBER OF REFERRALS PER YOUTH

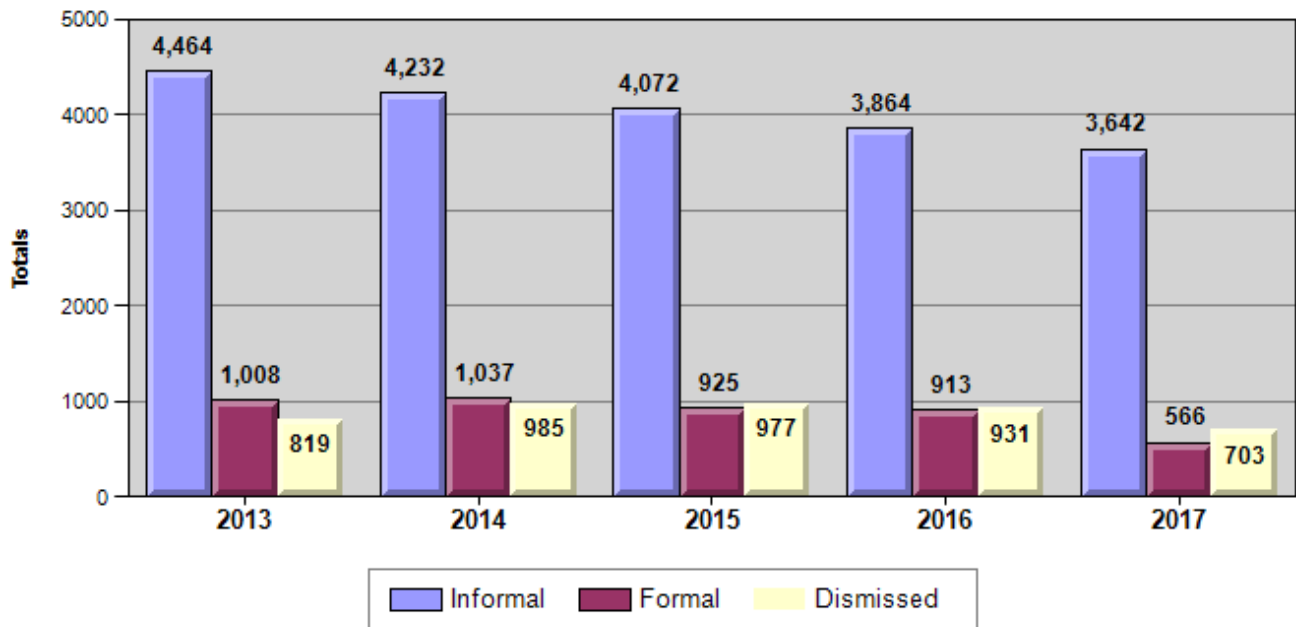


# OFFENSE CLASSIFICATIONS

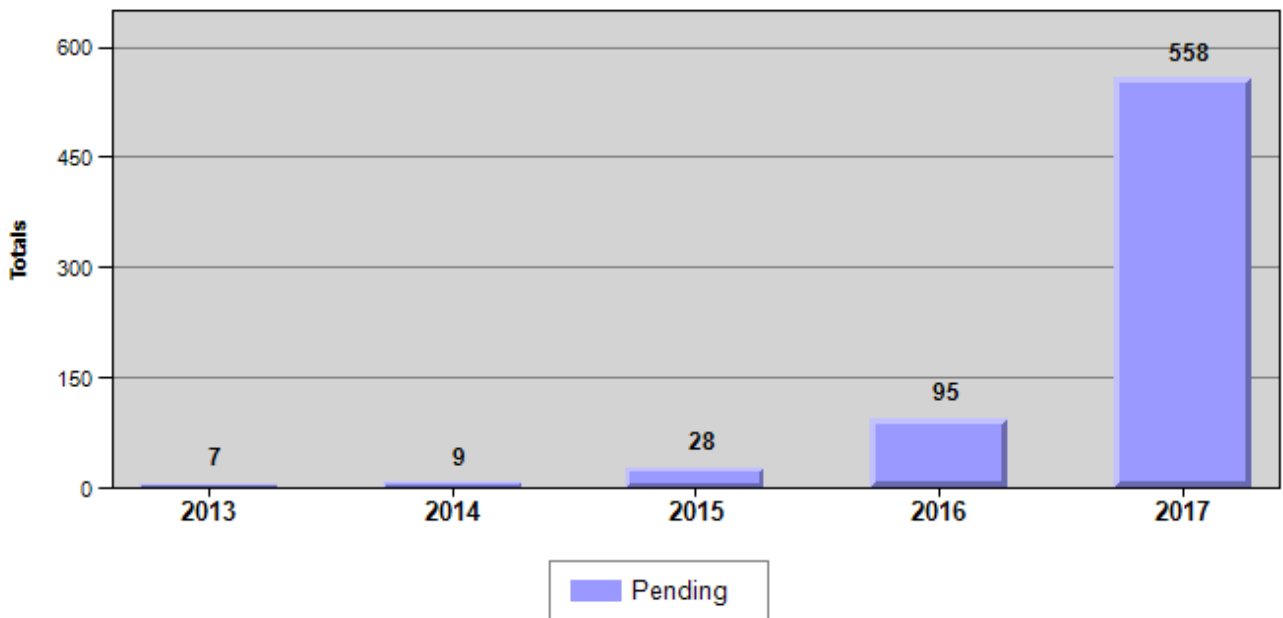




## TYPE OF DISPOSITION USED



## REFERRALS PENDING DISPOSITION



\* These are referrals that are awaiting action from the county attorney's office, requires further investigation by law enforcement, or a ticket has been issued and juvenile probation is waiting to see the youth and parent(s).

# YOUTH COURT CONTACTS BY JUDICIAL DISTRICT

## **DISTRICT #1**

*Lewis and Clark, Broadwater*

**District Court Judges:** Mike Menahan, McMahon, Kathy Seeley, James Reynolds

**Chief Juvenile Probation Officer:**  
Sharon Tregidga / Contact Number: 447-8228

## **DISTRICT #2**

*Silver Bow*

**District Court Judges:** Kurt Krueger, Brad Newman

**Chief Juvenile Probation Officer:**  
Jennifer Briggs / Contact Number: 497-6375

## **DISTRICT #3**

*Deer Lodge, Powell, Granite*

**District Court Judge:** Ray Dayton

**Chief Juvenile Probation Officer:**  
Marylyn Shovlin / Contact Number: 563-4031

## **DISTRICT #4**

*Missoula, Mineral*

**District Court Judges:** Leslie Halligan, Dusty Deschamps, John Larson, Karen Townsend

**Chief Juvenile Probation Officer:**  
Glen Welch / Contact Number: 258-4735

## **DISTRICT #5**

*Beaverhead, Jefferson, Madison*

**District Court Judge:** Luke Berger

**Chief Juvenile Probation Officer:**  
Sam Stockett / Contact Number: 683-3760

## **DISTRICT #6**

*Park, Sweet Grass*

**District Court Judge:** Brenda Gilbert

**Chief Juvenile Probation Officer:**  
Lesa Maher / Contact Number: 222-4162

## **DISTRICT #7**

*Dawson, Richland, McCone, Wibaux, Prairie*

**District Court Judges:** Katherine Bidegaray, Olivia Rieger

**Chief Juvenile Probation Officer:**  
Kale Rasmussen / Contact Number: 377-4675

## **DISTRICT #8**

*Cascade*

**District Court Judges:** Greg Pinski, Elizabeth Best, John Kutzman, John Parker

**Chief Juvenile Probation Officer:**  
Tim Callahan / Contact Number: 454-6880

## **DISTRICT #9**

*Glacier, Pondera, Teton, Toole*

**District Court Judge:** Robert "Bob" Olson

**Chief Juvenile Probation Officer:**  
Tasha Stiner / Contact Number: 873-3620

## **DISTRICT #10**

*Fergus, Judith Basin, Petroleum*

**District Court Judge:** Jon Oldenburg

**Chief Juvenile Probation Officer:**  
Laura Singley / Contact Number: 538-9242

## **DISTRICT #11**

*Flathead*

**District Court Judges:** Robert Allison, Amy Eddy, Heidi Ulbricht, Dan Wilson

**Chief Juvenile Probation Officer:**  
Nick Nyman / Contact Number: 758-5547

## **DISTRICT #12**

*Hill, Chouteau, Liberty*

**District Court Judge:** Daniel Boucher

**Chief Juvenile Probation Officer:**  
Kevin Buerkle / Contact Number: 265-5481

**DISTRICT #13**

*Yellowstone*

**District Court Judges:** Ingrid Gustafson, Donald Harris, Michael Moses, Gregory Todd, Rod Souza, Mary Jane Knisely

**Chief Juvenile Probation Officer:**

Tara French / Contact Number: 256-2843

**DISTRICT #14**

*Golden Valley, Meagher, Musselshell, Wheatland*

**District Court Judge:** Randal Spaulding

**Chief Juvenile Probation Officer:**

Vacant / Contact Number: 323-1714

**DISTRICT #15**

*Roosevelt, Sheridan, Daniels*

**District Court Judge:** David Cybulski

**Chief Juvenile Probation Officer:**

Ron Kemp / Contact Number: 653-6263

**DISTRICT #16**

*Carter, Custer, Fallon, Garfield, Powder River, Rosebud, Treasure*

**District Court Judges:** Nickolas Murnion, Michael Hayworth

**Chief Juvenile Probation Officer:**

Matt Phillips / Contact Number: 874-3418

**DISTRICT #17**

*Blaine, Phillips, Valley*

**District Court Judge:** Yvonne Laird

**Chief Juvenile Probation Officer:**

Vacant / Contact Number: 654-2087

**DISTRICT #18**

*Gallatin*

**District Court Judges:** Holly Brown, Rienne Hartman McElyea, John Brown

**Chief Juvenile Probation Officer:**

Vacant / Contact Number: 582-2180

**DISTRICT #19**

*Lincoln*

**District Court Judge:** Matthew Cuffe

**Chief Juvenile Probation Officer:**

Kindra Hageness / Contact Number: 293-9715

**DISTRICT #20**

*Lake, Sanders*

**District Court Judges:** Jim Manley, Deborah Kim Christopher

**Chief Juvenile Probation Officer:**

Barb Monaco / Contact Number: 883-7264

**DISTRICT #21**

*Ravalli*

**District Court Judges:** Jeffrey Langton, James Haynes

**Chief Juvenile Probation Officer:**

Clint Arneson / Contact Number: 375-6805

**DISTRICT #22**

*Big Horn, Carbon, Stillwater*

**District Court Judge:** Blair Jones

**Chief Juvenile Probation Officer:**

Lindsey Fox / Contact Number: 322-8046