

JUSTICE FOR ALL

IN ACTION

In 2017, 846 cases were filed in the Sixth Judicial District court, which includes Park and Sweet Grass Counties. Ordinary Montanans often must navigate complex legal situations on their own.

846



Fewer than 1 in 10 low or moderate income Montanans who need civil legal help receive it.

This number includes people who are...



In Park and Sweet Grass Counties in 2017:

67

Montana Legal Services Association (MLSA) handled 35 cases, helping 67 people and their family members.

88% of MLSA clients living in Park and Sweet Grass Counties increased their knowledge of the legal system, their legal rights, and how to solve their legal problems as a result of receiving civil legal aid.



535

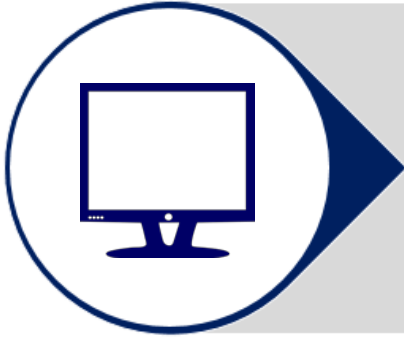
535 people living in Park and Sweet Grass Counties accessed MontanaLawHelp.org to find free legal information and forms.

The Aging Services Bureau served a total of 609 senior Montanans, including people living in Park and Sweet Grass Counties.



Montana's Self Help Court Law Centers provided 16,182 customer services statewide, helping thousands of people access free legal forms and information.

Montana Legal Services Association in Park and Sweet Grass Counties



ONLINE CIVIL LEGAL RESOURCES

www.MontanaLawHelp.org provides free civil legal information and legal forms to anyone who needs it. There is no income requirement.

AskKarla.org gives users the opportunity to ask basic legal questions and receive legal advice from volunteer pro bono attorneys. Users must meet income requirements.



PRO BONO SERVICES

The **Park/Sweet Grass County Bar Association and MLSA** partner to provide pro bono legal services to low income clients living in Park and Sweet Grass Counties.

MLSA's Phone Advice Program connects pro bono attorneys with clients living anywhere in the state. To receive pro bono services, clients should apply to MLSA.



FREE LEGAL CLINICS

MLSA supports Legal Clinics that connect clients with pro bono attorneys on a regular basis in many towns and communities.

Clients living in Park County are eligible to take part in the Gallatin Legal Advice Clinic, hosted by the Gallatin County Bar Association.

To take part in a clinic, clients should apply to MLSA.



CIRCUIT RIDES

MLSA attorneys regularly travel to rural communities in order to provide in-person civil legal services and to represent clients in court.

These services mean that no client has to go without legal representation because of where in the state they live.



LOCAL OFFICES

MLSA's Helena, Missoula, and Billings Offices provide free legal information, advice and representation to qualified clients anywhere in the state.

To apply, call 1-800-666-6899 or visit www.mtlsa.org.