

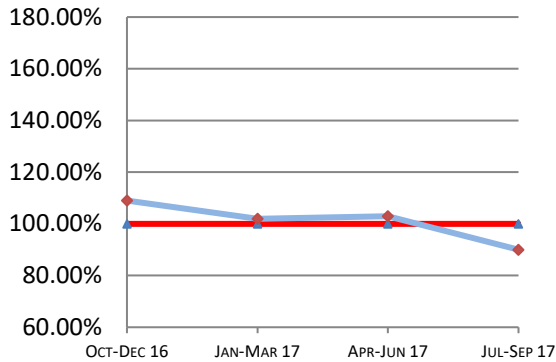
# Montana Supreme Court

## Case Processing Measures

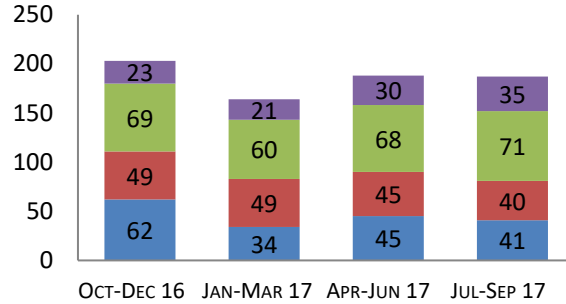
### Quarterly Report

# Jul-Sep 2017

#### Case Clearance



#### Manner of Disposition



Published Opinion Non-Cite Opinion or Memorandum  
Closed Other Original Proceeding Dispositive Order

**Data for the Age of Pending Cases in Quarter 3 of 2017 was not captured.**

#### 3rd Quarter 2017 Highlights

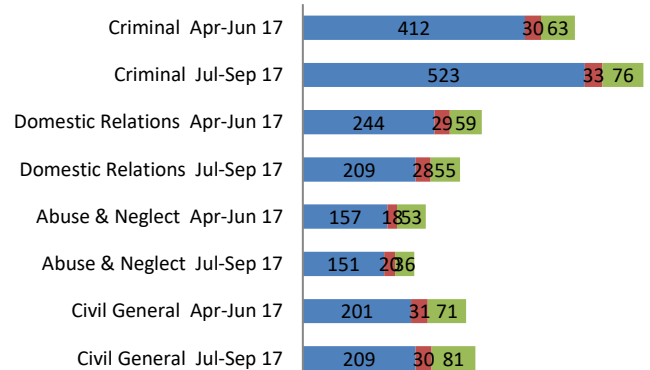
\* Time to Disposition for Original Proceedings for Original Proceedings increased from 48 days in Q2 to 182 days in Q3.

\* Time to Disposition for Direct Appeals increased very minimally in Q3 over Q2.

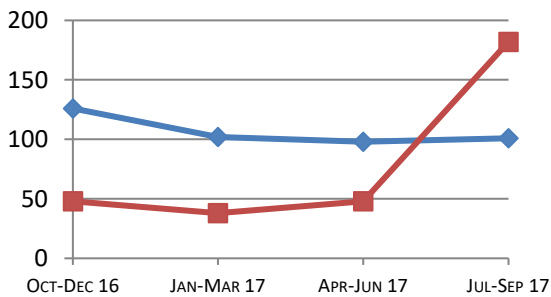
\* Case Clearance rates dropped slightly in Q3 2017 from 103% to 89%.

#### Direct Appeal Lifecycle - Median Days by Case Type

- Median Days from Notice of Appeal to Court
- Median Days from Date Sent to Court to Classification
- Median Days from Classification to Remittitur



#### Time to Disposition



Direct Appeals Original Proceedings

**Case Clearance:** The ratio between the number of cases closed (outgoing) and the number of cases filed (incoming).

**Manner of Disposition:** The manner by which the Court disposes of its cases.

**Age of Pending Cases:** The age of the Court's active cases (does not include stayed cases).

**Time to Disposition:** The length of time (median days) it takes the Court to dispose of cases.

*Baseline information and a description of the methodology used is available at [www.courts.mt.gov](http://www.courts.mt.gov)*