

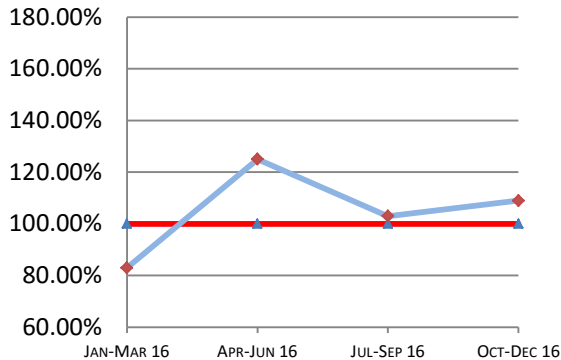
Montana Supreme Court

Case Processing Measures

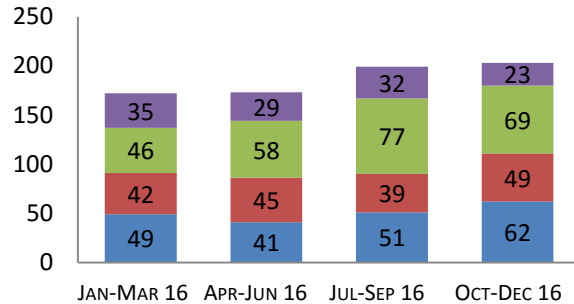
Quarterly Report

Oct-Dec 2016

Case Clearance



Manner of Disposition



Published Opinion Non-Cite Opinion or Memorandum
 Closed Other Original Proceeding Dispositive Order

Age of Pending Cases as of: 01/01/17

Age in Days from Date Sent to Court	# Cases Less than 180 Days Old	# Cases More than 180 Days old	Percent Current (less than 180 days old)
Direct Appeal			
Civil General	45	2	96%
Domestic Relations	6	0	100%
Abuse & Neglect	6	0	100%
Criminal	33	1	97%
Direct Appeal All	90	3	97%
Original Proceedings	9	0	100%

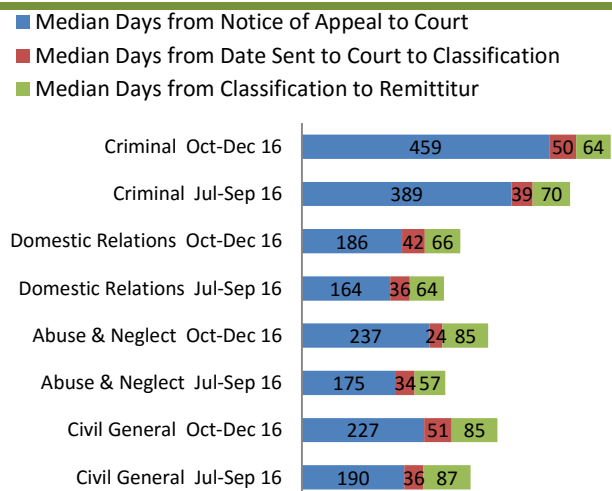
4th Quarter 2016 Highlights

In Q4 of 2016 case clearance rates improved by 5% over Q3 of 2016. Rates in Q3 were 103% and in Q4 were 108%.

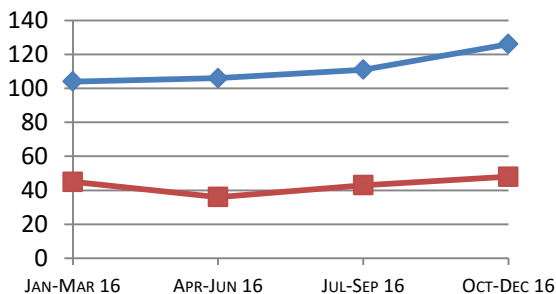
Time to Disposition for both Direct Appeals and Original Proceedings increased slightly over Q3, 2016.

Direct Appeals time increased by 15 days over Q3.
 Original Proceedings time increased by 5 days over Q3.

Direct Appeal Lifecycle - Median Days by Case Type



Time to Disposition



Direct Appeals Original Proceedings

Case Clearance: The ratio between the number of cases closed (outgoing) and the number of cases filed (incoming).

Manner of Disposition: The manner by which the Court disposes of its cases.

Age of Pending Cases: The age of the Court's active cases (does not include stayed cases).

Time to Disposition: The length of time (median days) it takes the Court to dispose of cases.

Baseline information and a description of the methodology used is available at www.courts.mt.gov