

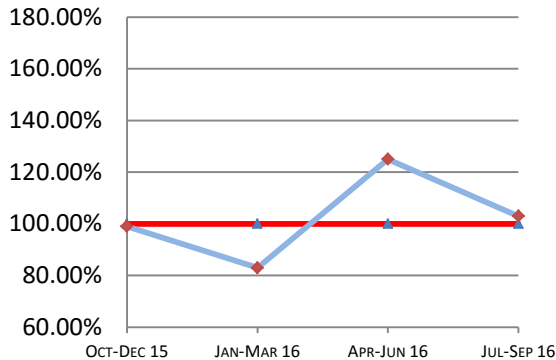
# Montana Supreme Court

## Case Processing Measures

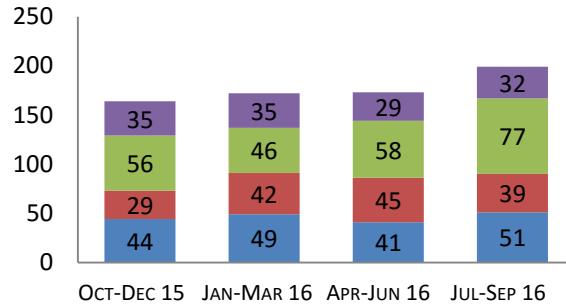
### Quarterly Report

# Jul-Sep 2016

#### Case Clearance



#### Manner of Disposition



Published Opinion    Non-Cite Opinion or Memorandum  
 Closed Other    Original Proceeding Dispositive Order

#### Age of Pending Cases as of: 10/01/16

Age in Days from Date Sent to Court	# Cases Less than 180 Days Old	# Cases More than 180 Days old	Percent Current (less than 180 days old)
<b>Direct Appeal</b>			
Civil General	64	5	93%
Domestic Relations	5	0	100%
Abuse & Neglect	3	0	100%
Criminal	42	1	98%
<b>Direct Appeal All</b>	<b>114</b>	<b>6</b>	<b>95%</b>
<b>Original Proceedings</b>			
	12	0	100%

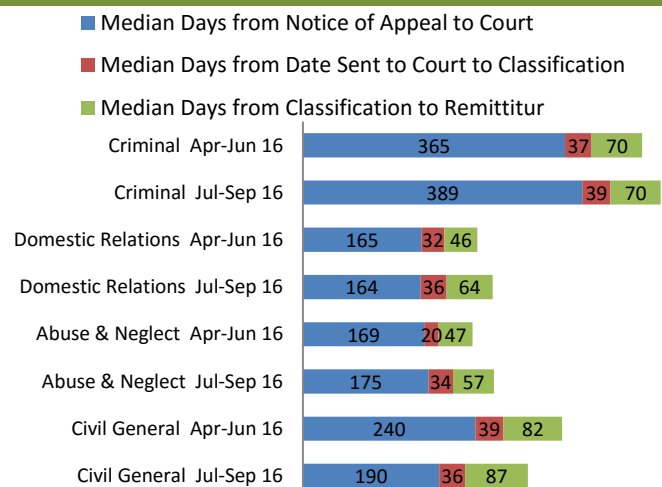
#### 3rd Quarter 2016 Highlights

Case Clearance rates in Q3 2016 decreased from Q2 and remain at 100%.

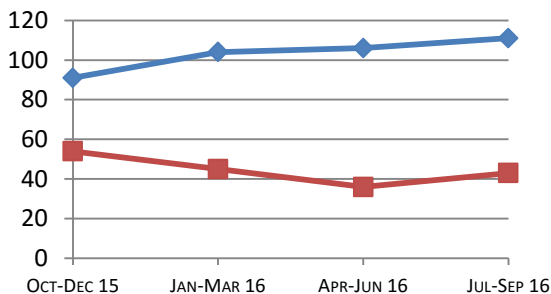
Time to Disposition for both Direct Appeals and Original Proceedings increased slightly over Q2, 2016.

Median Days from Notice of Appeal to Date Sent to Court decreased by 50 days in Q3 for General Civil Cases .

#### Direct Appeal Lifecycle - Median Days by Case Type



#### Time to Disposition



Direct Appeals    Original Proceedings

**Case Clearance:** The ratio between the number of cases closed (outgoing) and the number of cases filed (incoming).

**Manner of Disposition:** The manner by which the Court disposes of its cases.

**Age of Pending Cases:** The age of the Court's active cases (does not include stayed cases ).

**Time to Disposition:** The length of time (median days) it takes the Court to dispose of cases.

*Baseline information and a description of the methodology used is available at [www.courts.mt.gov](http://www.courts.mt.gov)*