

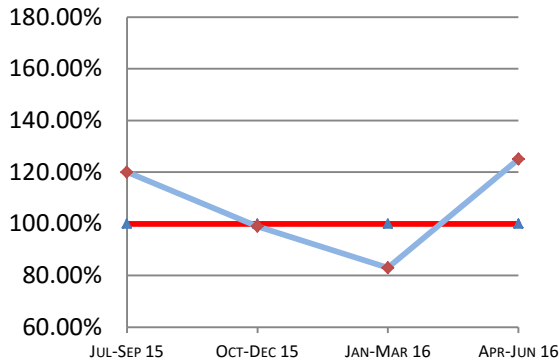
Montana Supreme Court

Case Processing Measures

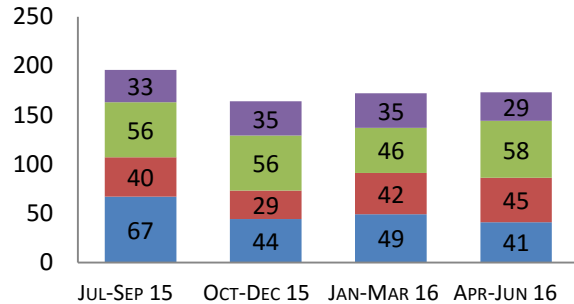
Quarterly Report

Apr-Jun 2016

Case Clearance



Manner of Disposition



Published Opinion Non-Cite Opinion or Memorandum
 Closed Other Original Proceeding Dispositive Order

Age of Pending Cases as of: 07/01/16

Age in Days from Date Sent to Court	# Cases Less than 180 Days Old	# Cases More than 180 Days old	Percent Current (less than 180 days old)
Direct Appeal			
Civil General	66	4	94%
Domestic Relations	11	0	100%
Abuse & Neglect	11	0	100%
Criminal	43	0	100%
Direct Appeal All	131	4	97%
Original Proceedings	13	0	100%

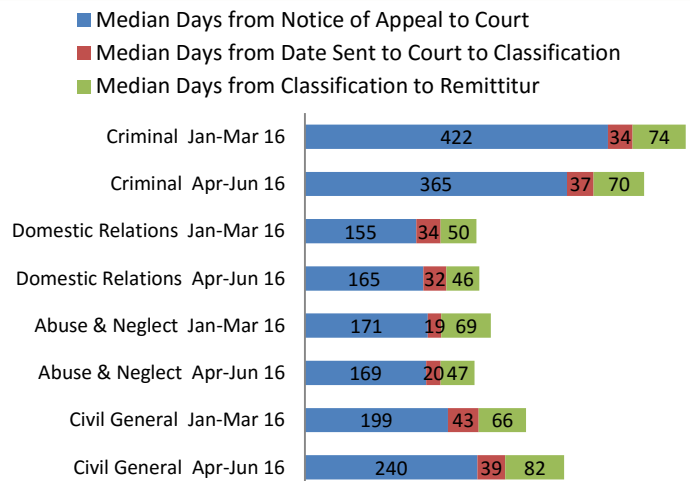
2nd Quarter 2016 Highlights

Case Clearance rates increased significantly in Q2 2016 going from 83% in Quarter 1 to 124% in Quarter 2. 117 Cases were filed while 146 cases were closed in Quarter 2.

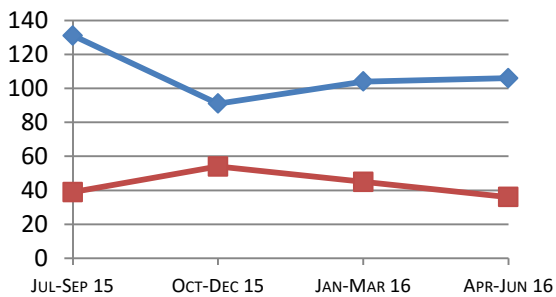
Time to Disposition continues to decline in Original Proceeding cases.

Criminal Case median days from Notice of Appeal to Date Sent to Court continue to drop. In Q2 2016 median days fell from 422 days to 365 days, a decrease of 57 days over Quarter 1.

Direct Appeal Lifecycle - Median Days by Case Type



Time to Disposition



Direct Appeals Original Proceedings

Case Clearance: The ratio between the number of cases closed (outgoing) and the number of cases filed (incoming).

Manner of Disposition: The manner by which the Court disposes of its cases.

Age of Pending Cases: The age of the Court's active cases (does not include stayed cases).

Time to Disposition: The length of time (median days) it takes the Court to dispose of cases.

Baseline information and a description of the methodology used is available at www.courts.mt.gov