

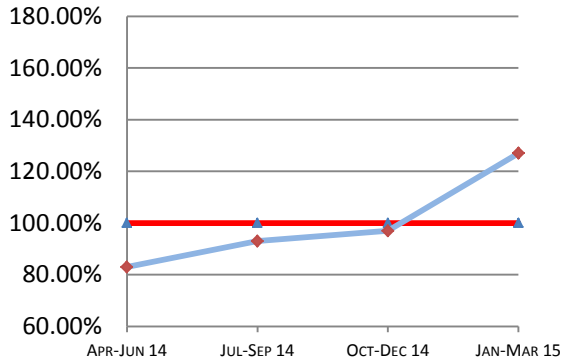
Montana Supreme Court

Case Processing Measures

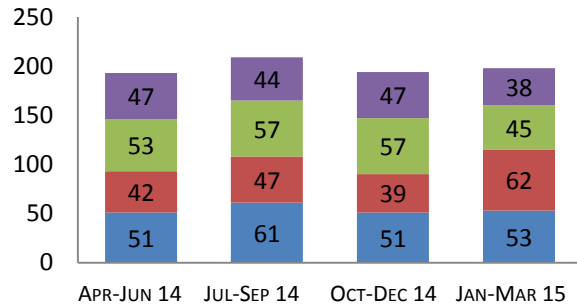
Quarterly Report

Jan-Mar 2015

Case Clearance



Manner of Disposition



Published Opinion (blue) Non-Cite Opinion or Memorandum (red)
 Closed Other (green) Original Proceeding (purple) Dispositive Order (dark blue)

Age of Pending Cases as of: 04/01/15

Age in Days from Date Sent to Court	# Cases Less than 180 Days Old	# Cases More than 180 Days old	Percent Current (less than 180 days old)
Direct Appeal			
Civil General	69	4	95%
Domestic Relations	10	0	100%
Abuse & Neglect	21	0	100%
Criminal	33	2	94%
Direct Appeal All	133	6	96%
Original Proceedings			
	25	1	96%

1st Quarter 2015 Highlights

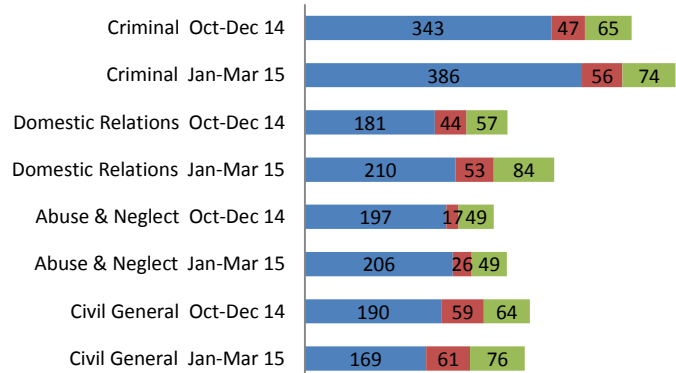
* Case clearance rates in the first quarter of 2015 increased by 30% over quarter 4 of 2014. Clearance rates went from 97% to a dramatic 127% clearance.

* Direct Appeals Time to Disposition increased in Quarter 1 of 2015. Rates went from 113 days in Q4 2014 to 119 days in Q1 2015.

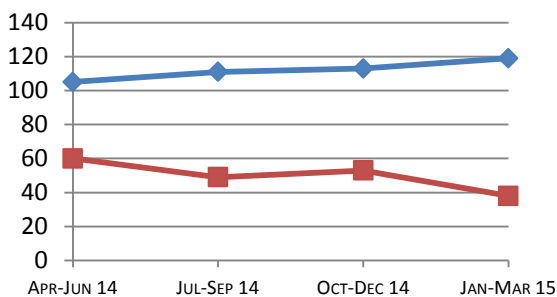
* Original Proceedings Time to Disposition decreased in Quarter 1 of 2015. Rates went from 53 days in Q4 2014 to 38 days in Q1 2015.

Direct Appeal Lifecycle - Median Days by Case Type

- Median Days from Notice of Appeal to Court
- Median Days from Date Sent to Court to Classification
- Median Days from Classification to Remittitur



Time to Disposition



Direct Appeals (blue) Original Proceedings (red)

Case Clearance: The ratio between the number of cases closed (outgoing) and the number of cases filed (incoming).

Manner of Disposition: The manner by which the Court disposes of its cases.

Age of Pending Cases: The age of the Court's active cases (does not include stayed cases).

Time to Disposition: The length of time (median days) it takes the Court to dispose of cases.

Baseline information and a description of the methodology used is available at www.courts.mt.gov