

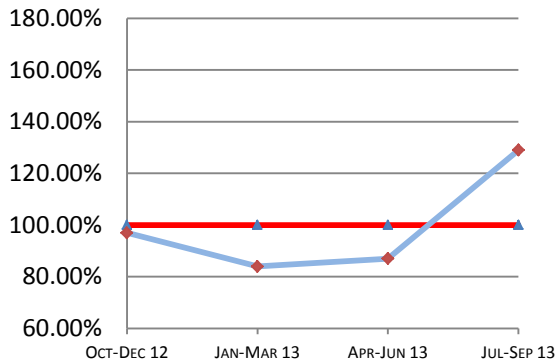
# Montana Supreme Court

## Case Processing Measures

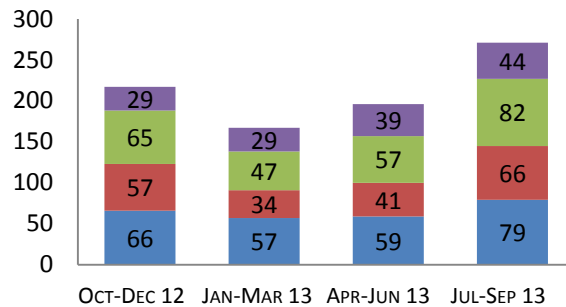
### Quarterly Report

# Jul-Sep 2013

#### Case Clearance



#### Manner of Disposition



Published Opinion   Non-Cite Opinion or Memorandum  
 Closed Other   Original Proceeding Dispositive Order

#### Age of Pending Cases as of: 10/01/13

Age in Days from Date Sent to Court	# Cases Less than 180 Days Old	# Cases More than 180 Days old	Percent Current (less than 180 days old)
<b>Direct Appeal</b>			
Civil General	54	5	92%
Domestic Relations	5	0	100%
Abuse & Neglect	13	0	100%
Criminal	29	0	100%
<b>Direct Appeal All</b>	<b>101</b>	<b>5</b>	<b>95%</b>
<b>Original Proceedings</b>			
	28	0	100%

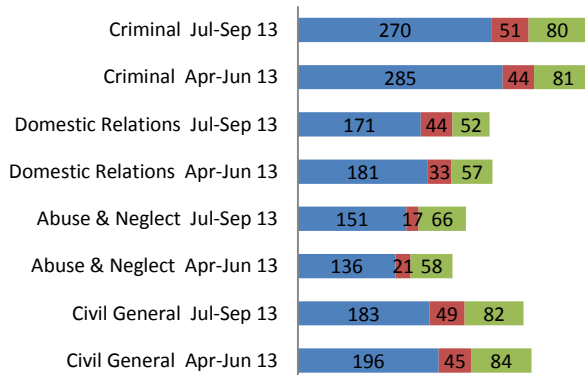
#### 3rd Quarter 2013 Highlights

\* With 196 cases filed and 253 cases closed in the 3rd Quarter of 2013 Case Clearance rates increased by 42% over the 2nd Quarter Case Clearance rates.

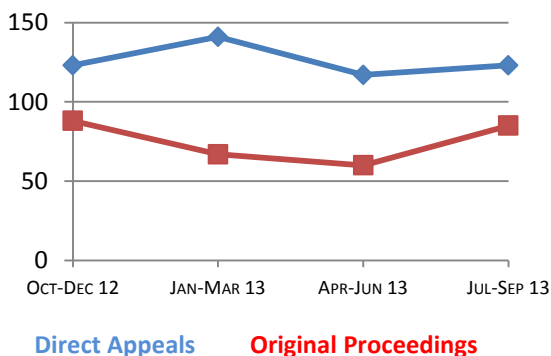
\* When compared to last quarter, disposition time increased slightly from 117 days to 123 days for Direct Appeals and from 60 days to 85 days for Original Proceedings.

#### Direct Appeal Lifecycle - Median Days by Case Type

- Median Days from Notice of Appeal to Court
- Median Days from Date Sent to Court to Classification
- Median Days from Classification to Remittitur



#### Time to Disposition



**Case Clearance:** The ratio between the number of cases closed (outgoing) and the number of cases filed (incoming).

**Manner of Disposition:** The manner by which the Court disposes of its cases.

**Age of Pending Cases:** The age of the Court's active cases (does not include stayed cases).

**Time to Disposition:** The length of time (median days) it takes the Court to dispose of cases.

*Baseline information and a description of the methodology used is available at [www.courts.mt.gov](http://www.courts.mt.gov)*