

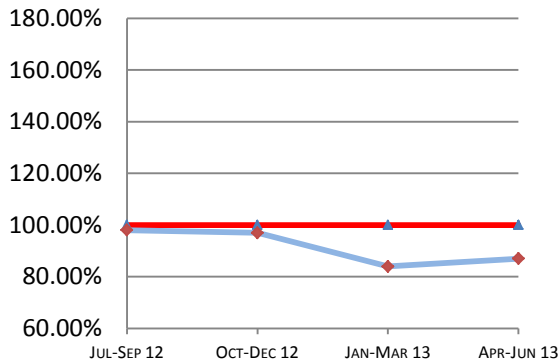
# Montana Supreme Court

## Case Processing Measures

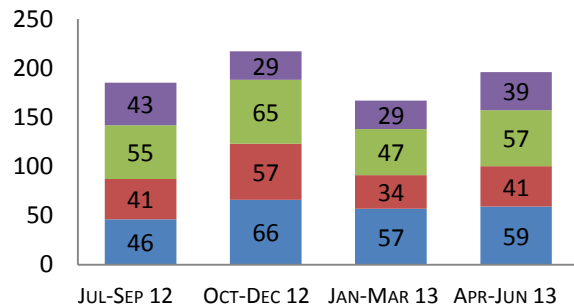
### Quarterly Report

# Apr-Jun 2013

#### Case Clearance



#### Manner of Disposition



Published Opinion (Red) Non-Cite Opinion or Memorandum (Blue)  
 Closed (Blue) Other (Red) Original Proceeding (Green) Dispositive Order (Purple)

#### Age of Pending Cases as of: 07/01/13

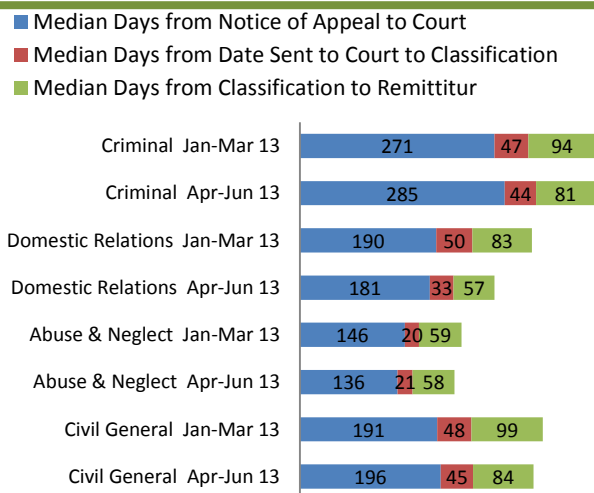
Age in Days from Date Sent to Court	# Cases Less than 180 Days Old	# Cases More than 180 Days old	Percent Current (less than 180 days old)
<b>Direct Appeal</b>			
Civil General	87	4	96%
Domestic Relations	9	0	100%
Abuse & Neglect	11	0	100%
Criminal	42	2	95%
<b>Direct Appeal All</b>	<b>149</b>	<b>6</b>	<b>96%</b>
<b>Original Proceedings</b>			
	37	3	93%

#### 2nd Quarter 2013 Highlights

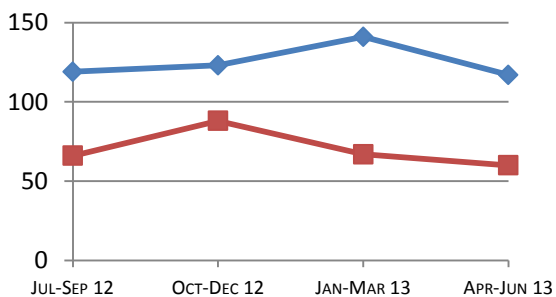
\* Case Clearance rates increased in 2nd Quarter 2013 4%. In 1st Quarter 213 cases were filed and 178 cases closed. In 2nd Quarter 202 cases were filed and 176 cases closed.

\* When compared to last quarter, disposition time decreased both for Direct Appeals, as well as Original Proceedings. Direct Appeals decreased from 141 days in 1st Quarter to 117 days in 2nd Quarter. Original Proceedings decreased from 67 days 1st quarter to 60 days 2nd quarter.

#### Direct Appeal Lifecycle - Median Days by Case Type



#### Time to Disposition



Direct Appeals (Blue) Original Proceedings (Red)

**Case Clearance:** The ratio between the number of cases closed (outgoing) and the number of cases filed (incoming).

**Manner of Disposition:** The manner by which the Court disposes of its cases.

**Age of Pending Cases:** The age of the Court's active cases (does not include stayed cases).

**Time to Disposition:** The length of time (median days) it takes the Court to dispose of cases.

*Baseline information and a description of the methodology used is available at [www.courts.mt.gov](http://www.courts.mt.gov)*