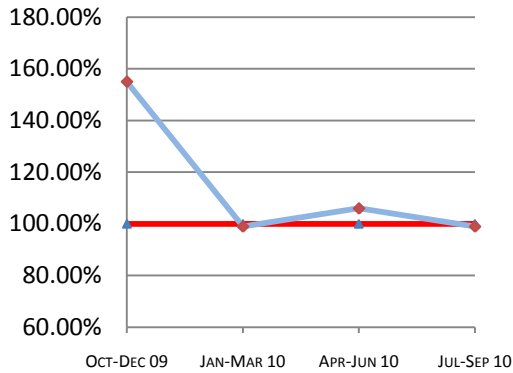


# Montana Supreme Court

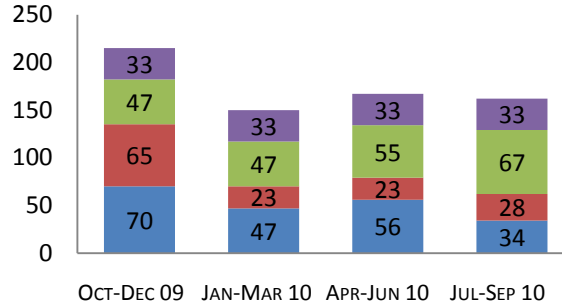
## Case Processing Measures Quarterly Report

# Jul-Sep 2010

### Case Clearance



### Manner of Disposition



Published Opinion    Non-Cite Opinion or Memorandum  
Closed Other    Original Proceeding Dispositive Order

### Age of Pending Cases as of: 10/1/2010

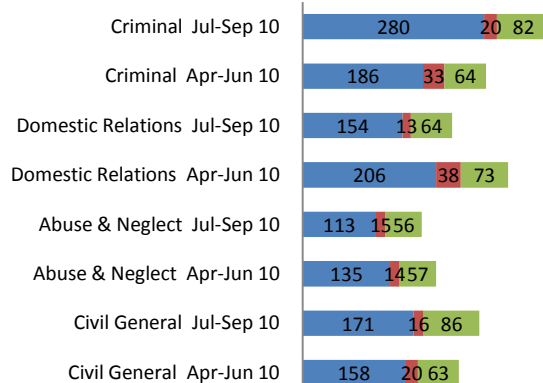
Age in Days from Date Sent to Court	# Cases Less than 365 Days Old	# Cases More than 365 Days old	Percent Current (less than 365 days old)
<b>Direct Appeal</b>			
Civil General	38	1	97%
Domestic Relations	3	0	100%
Abuse & Neglect	5	0	100%
Criminal	34	0	100%
<b>Direct Appeal All</b>	<b>80</b>	<b>1</b>	<b>99%</b>
<b>Original Proceedings</b>	<b>26</b>	<b>1</b>	<b>96%</b>

### Quarter Highlights

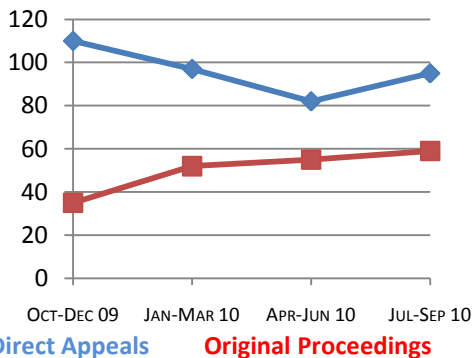
- Current with incoming caseload.
- Number of days to dispose of both direct appeals & original proceedings increased.
- Number of dispositive orders for original proceedings held steady while fewer published opinions issued.

### Direct Appeal Lifecycle - Median Days by Case Type

- Median Days from Notice of Appeal to Court
- Median Days from Date Sent to Court to Classification
- Median Days from Classification to Remittitur



### Time to Disposition



**Case Clearance:** The ratio between the number of cases closed (outgoing) and the number of cases filed (incoming).

**Manner of Disposition:** The manner by which the Court disposes of its cases.

**Age of Pending Cases:** The age of the Court's active cases (does not include stayed cases).

**Time to Disposition:** The length of time (median days) it takes the Court to dispose of cases.

*Baseline information and a description of the methodology used is available at [www.courts.mt.gov](http://www.courts.mt.gov)*