

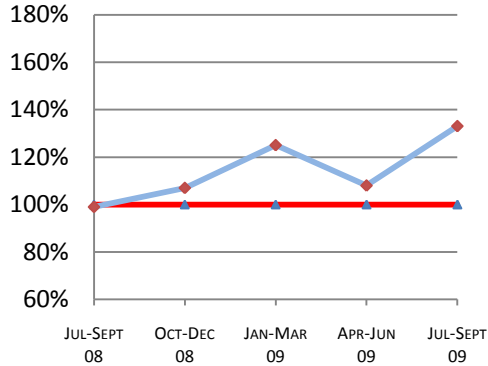
# Montana Supreme Court

## Case Processing Measures

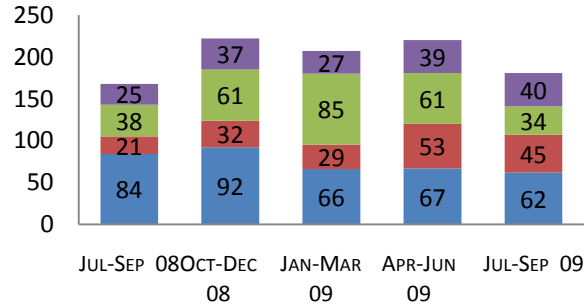
Quarterly Report (Jul 09 -Sep 09)

# 2009

### Case Clearance



### Manner of Disposition



Published Opinion Non-Cite Opinion or Memorandum  
Closed Other Original Proceeding Dispositive Order

### Age of Pending Cases as of 9/30/2009

Age in Days from Date Sent to Court	# Cases Less than 365 Days Old	# Cases More than 365 Days old	Percent Current (less than 365 days old)
<b>Direct Appeal</b>			
Civil General	86	13	87%
Domestic Relations	14	0	100%
Abuse & Neglect	7	0	100%
Criminal	49	1	98%
<b>Direct Appeal All</b>	156	14	92%
<b>Original Proceedings</b>	22	1	96%

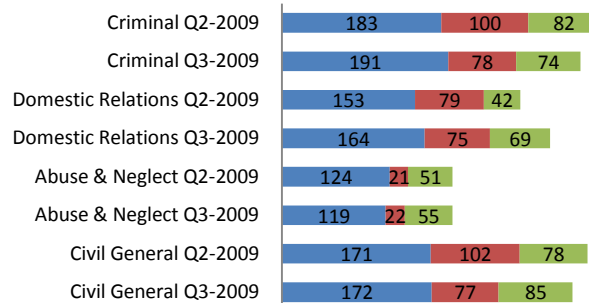
### Quarter Highlights

Case clearance remained above 100%. There were 31 fewer cases filed in the 3rd quarter of 2009 than 3rd quarter 2008.

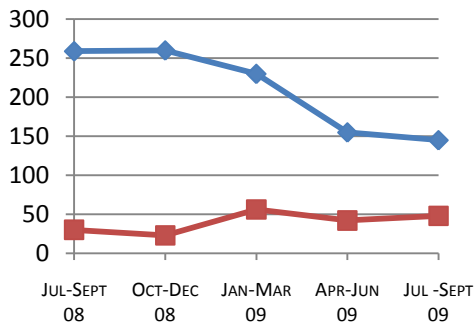
The number of cases at the court older than 365 days was reduced to 15 compared to 22 in the 2nd quarter.

### Direct Appeal Lifecycle - Median Days by Case Type

- Median Days from Notice of Appeal to Court
- Median Days from Date Sent to Court to Classification
- Median Days from Classification to Remittitur



### Time to Disposition



Direct Appeals Original Proceedings

**Case Clearance:** The ratio between the number of cases closed (outgoing) and the number of cases filed (incoming).

**Manner of Disposition:** The manner by which the Court disposes of its cases.

**Age of Pending Cases:** The age of the Court's active cases (does not include stayed cases).

**Time to Disposition:** The length of time (median days) it takes the Court to dispose of cases.

Baseline information and a description of the methodology used is available at [www.courts.mt.gov](http://www.courts.mt.gov)